

Twentieth Century Art & Design

Friday 6th December at 10am



Lot No. 228

On View: Thursday 5th 10am-7pm and sale day from 9am

Fully illustrated catalogue: www.lskauctioncentre.co.uk

Results available online after the sale

Buyer's Premium charged on all lots at 22.5% plus VAT

Free live bidding available through our website

Your contact at the saleroom is:

Shaun Crichton scrichton@lsk.co.uk 01284 748 618

IMPORTANT NOTICES

Special attention is drawn to the **Terms of Sale** on our website and displayed in the saleroom.

Paddle Bidding All buyers attending the auction need to register for a paddle number to enable them to bid, this process is simple and takes approximately 30 seconds, however we do require some form of identification i.e. driver's licence.

Absentee Bidding Buyers can submit commission bids by email, telephone, or via our website www.lskauktioncentre.co.uk and we will bid on your behalf. It is important to allow sufficient time for commission bids to be processed when leaving bids. Lacy Scott & Knight offer a **free online bidding service via our website** which becomes 'live' half an hour before the auction starts.

Condition Neither the Auctioneers nor the Vendor are responsible as to the condition of lots listed. The absence of any such reference does not imply that a lot is in good order or free from imperfections or repairs. Intending purchasers are strongly recommend to satisfy themselves prior to the sale of the condition of any lot. Condition reports can be compiled upon request, but must be considered solely as a matter of opinion and not fact. Purchasers are reminded that goods become the sole responsibility of the buyer at the fall of the hammer.

VAT VAT at the prevailing rate is payable on top of the buyers premium.

Buyer's Premium All lots are sold with a Buyer's Premium of 22.5% (unless otherwise stated), this figure is also subject to VAT at the prevailing rate e.g. a buyer with a hammer total of £100 will have a gross invoice of £127.

Artists Resale Rights / Droit de Suite Lots bearing this symbol § may be subject to ARR, which is charged at 4% (inclusive of VAT*) on top of the hammer price and Buyers Premium. This is applicable to paintings or works of art whilst the artist is living and for 70 years after the artists death. **This charge is payable on lots with a hammer price in excess of £1000.**

Selling Rate Our auctioneers sell at approximately 120 lots per hour, buyers are advised to make sure they are in the saleroom at least 20 minutes before a lot is expected to be offered in case the auctioneer is ahead of schedule.

Payment We accept most methods of payment including cash (up to £8,000), cheques supported by valid banker's card, debit cards and credit cards (Not AMEX or Diners Club).

Bank. LLOYDS, Risbygate Street, BURY ST EDMUNDS **CLIENT:** Lacy Scott & Knight LLP

ACCOUNT NO: 32257868 **SORT CODE:** 30-64-22 **SWIFT/BIC CODE:** LOYDGB21666 **IBAN NO:** GB71 LOYD 3064 2232 2578 68

Collection/Delivery All lots must be removed from the Auction Centre by midday on the Friday following the sale unless prior arrangement has been made with the auctioneers.

Packing and Postage Most items can be sent in-house for our standard UK rate of £20 for the first three lots (£30 for most of Europe), then £2 per lot thereafter. For bulky/heavy items or to ship outside of Europe, please contact our postage department for a quote on crevell@lsk.co.uk. If we are unable to ship in-house, then we recommend MailBoxes or Alban Shipping.

How to find us The Auction Centre is situated in the heart of historic Bury St Edmunds, directly behind the arc shopping centre and close to main bus/coach and train stations and the A14 dual carriageway.

Our address is: 10 Risbygate Street, Bury St Edmunds, Suffolk, IP33 3AA.

Parking We have our own large car park adjacent to the Salerooms which is free of charge to all buyers (**sale days and viewing only**), when this car park is full we suggest using the large Borough car parks close to the Auction Centre.

Post 1950 Upholstered Furniture & Furnishings All items of post-1950 furniture included in a sale are items either not originally supplied for use in a private home or now offered solely as works of art. These items may not comply with the provisions of the Furniture and Furnishings (Fire) (Safety) Regulations 1988 (as amended in 1989 and 1993, the "Regulations"). Accordingly, these items should not be used as furniture in your home in their current condition. If you do intend to use such items for this purpose, you must first ensure that they are reupholstered, re-stuffed and/or recovered (as appropriate) in order that they comply with the provisions of the Regulations.

DECORATIVE ARTS

- 1 **An Art Nouveau Sarreguimines pottery vase**, decorated with peacock feathers, h.28cm, together with a Royal Lancastrian blue glazed vase, of squat globular form, h.15cm, an Isle of Wight studio pottery vase, h.15cm, and an Art Nouveau French pottery vase, h.17cm (4) **£50-100**
- 2 **Ruskin Pottery - a Kingfisher Blue iridescent lustre vase**, of lower bulbous form, impressed 'Ruskin' and dated '1913' verso, h.17.5cm **£80-120**
- 3 **A pair of Art Deco Carltonware ceramic vases**, each decorated with butterflies over a spider's web, h.27cm **£40-60**
- 4 **A collection of three Art Deco Carltonware ceramic vases**, various colours and patterns, each h.21cm **£40-60**
- 5 **A collection of Art Deco Carltonware blue ceramic lustreware**, various shapes and patterns, largest h.21cm (6) **£60-80**
- 6 **A collection of Art Deco Carltonware lustre ceramics**, various colours and patterns, largest bowl dia.15cm (6) **£40-60**
- 7 **A collection of Art Deco Carltonware ceramics**, various colours and patterns, largest h.20.5cm (5) **£40-60**
- 8 **An Art Deco Carltonware orange lustre 'Parrot' pattern ceramic vase**, of baluster form, h.27.5cm, together with two further Carltonware orange lustre vases (3) **£30-50**
- 9 **A collection of Art Deco Carltonware orange lustre ceramics**, various shapes and patterns, largest h.26cm (8) **£40-60**
- 10 **An Art Deco Carltonware ceramic dish**, decorated with a mallard, dia.23.5cm **£30-40**
- 11 **An Art Deco Carltonware 'Floral Comets' pattern ceramic jug**, h.17.5cm **£50-70**
- 12 **A large Art Deco Carltonware 'Mandarin Tree' pattern vase**, of globular form, h.26cm **£40-60**
- 13 **An Art Deco Carltonware 'Anemone' pattern ceramic dish**, no.3694, w.21.5cm, together with another 'Hollyhocks' dish, no.3973, w.25cm (2) **£30-40**
- 14 **An Art Deco Carltonware 'Jazz Stitch' ceramic dish**, dia.23cm **£40-60**
- 15 **An Art Deco Carltonware 'Nightingales' pattern twin handled ceramic dish**, w.31cm, together with three further Carltonware dishes (4) **£30-50**
- 16 **An Art Deco Carltonware green lustre ceramic candlestick**, dia.12cm, together with a Wedgwood lustre box, w.10cm, and a Crown Devon Fieldings lustre vase, h.23.5cm (3) **£30-40**
- 17 **An Art Deco Carltonware 'Bird of Paradise' pattern ceramic vase**, h.22cm **£30-40**
- 18 **Three Carltonware Guinness advertising figures**, to include; kangaroo, seal and ostrich, printed marks to the underside, largest h.10.5cm **£40-60**
- 19 **An Art Deco Spode Velamour stylised pottery model of a polar bear**, circa 1930, length 31cm **£30-40**
- 20 **In the manner of Martin Brothers**, two studio pottery birds, each signed indistinctly, largest h.27cm **£40-60**
- 21 **A collection of Art Deco Plant Tuscan pottery figures**, each decorated in green, black and gilt, largest h.22cm (11) **£100-200**
- 22 **A collection of Art Deco Plant Tuscan pottery figures**, each polychrome decorated, largest h.23cm (11) **£100-200**
- 23 **A collection of Art Deco Plant Tuscan pottery figures**, each polychrome decorated, largest h.26cm (6) **£100-200**
- 24 **A 1930s Royal Dux porcelain figure of a seated young woman in pronounced pose**, painted decoration and further heightened in gilt, raised triangular mark, various impressed and printed marks, numbered '3373' verso, h.19.5cm **£80-120**
- 25 **A 1930s Wade pottery cellulose figure of Pavlova**, modelled holding her dress hem up in both hands, polychrome painted, various printed marks and further titled verso, h.22.5cm **£70-100**

26 Christian Thomsen for Royal Copenhagen - a large porcelain figure 'Boy on Rock', underglaze painted, printed and painted marks, numbered 1659 verso, h.31cm **£50-70**

27 Three various Royal Copenhagen glazed porcelain figures, to include; Boy whittling a stick, No.905, h.18cm; Young man with mallet, No.620, h.21.5cm; and The Sandman modelled as a boy holding an umbrella, No.1129, h.17cm, each with printed and painted marks verso (3) **£40-60**

28 A collection of various Royal Copenhagen animal ornaments, to include; seagull, various kingfishers, duck, pair of owls, pair of doves, pair of rats, rabbits etc (26) **£300-500**

29 Inge-Lise Koefoed (b.1939) for Royal Copenhagen, a teardrop shaped vase, decorated with geometric motifs upon a blue ground, printed mark to the underside, h.28.5cm **£40-60**

30 A circa 1930s Shelley pottery vase, of conical form with lower stepped detail, with trailing green and blue painted decoration, printed backstamp and incised numbered '926' verso, h.19.5cm **£50-70**

31 A Shelley red glazed pottery vase, of twin-handled albarello form, printed mark to the underside, h.26cm **£30-40**

32 Walter Slater for Shelley, an Art Deco 'Butterfly lustre' vase, of baluster form, h.25cm **£40-60**

33 An Art Deco Mintons lustre pottery dish, decorated with a cockerel, dia.22cm **£30-40**

34 A collection of Crown Devon Fieldings blue ceramic lustrewares, various shapes and patterns, largest h.25cm (8) **£100-200**

35 C.H. Brannam - an Art Deco monochrome green painted twin handled pottery bulkhead vase, impressed marks verso, h.21.5cm, base dia.25cm **£50-70**

36 A pair of 1930s Clarice Cliff Ravel pattern pottery twin handled tureens and covers, in the Odilon shape, each of circular squat footed form, with bright colour

abstract painted and banded decoration, black printed backstamps, registered design 'No.748856' stamped verso, max dia.24cm **£100-150**

37 A 1930s Clarice Cliff pierced and moulded circular wall charger, all-over bright colour stylised floral decorated, backstamp verso, dia.33cm **£40-60**

38 A pair of 1930s Clarice Cliff pottery 'Jack & Jill' wall masks, each typically relief moulded with bright colour painted and flower head bordered lower decoration, one with blue printed backstamp verso, the other with black printed backstamp verso, Jack dimensions 21 x 15cm, Jill dimensions 18 x 15cm **£750-1,000**



39 Eric Ravillious (1903-1942) for Wedgwood - a collection of pottery dinnerware in the Persephone pattern, comprising two oval serving plates, five twin handled soup bowls and dishes, three large dinner plates, six smaller dinner plates, six side plates, tureen and cover, and a gravy boat on stand, each with printed marks verso (30) **£80-120**

40 Keith Murray (1892-1981) for Wedgwood - a large matt straw glaze pottery vase, of shouldered tapering form, with typical concentric banded decoration, printed marks to underside, h.28cm **£50-80**

41 William John Marriner (1881-1967) for Fulham Pottery - an Alberware Range 'FMA' twin handled mantel vase, unglazed earthenware with glazed interior, impressed manufacturer's marks to underside edge of footrim, h.19cm, w.41.5cm **£150-250**

42 A French Art Deco pottery vase, the stepped neck over squat globular body, stylised incised decorated in

tones of black, silver and bronze, unsigned, h.25.5cm
£40-60

43 Gilbert Portanier (French, 1926-2023) for Rosenthal, a 'Le Midi' vase, having gilt and polychrome decoration, marked to the underside, h.21cm **£40-60**

44 Alain Dejardin (French, b.1941) - a lustre ware finished pottery vase, of shouldered slightly squat form, with raised stylised and silvered floral decoration, monogrammed and indistinctly dated verso, h.11cm **£40-60**

45 A large French Revernay pottery vase, circa 1930, mottled green and blue glaze, incised mark to the underside, h.38cm **£60-90**

46 A St Clement yellow glazed pottery vase, of ribbed ovoid form, marked 'St Clement France' to the underside, h.25.5cm **£30-50**

47 Louis-Etienne Desmunt (French, 1844-1902), an Art Nouveau lustre glazed vase, decorated with medieval style cartouches, h.16cm, together with a similar dish by the same hand, dia.20cm, and a Persian style polychrome bowl, dia.21cm (3) **£30-40**

48 A West German red glazed pottery vase, having a single loop handle and textured decoration, h.45cm, together with four further West German pottery vases (5) **£40-60**

49 A West German pottery vase, of slab-sided form, having a textured blue and black glaze, h.36cm, together with four further West German pottery vases (5) **£40-60**

50 A collection of principally West German studio pottery vases, comprising three large vases, one with volcanic upper decoration, sundry further mid-size and smaller examples, typically stylise decorated, the largest h.40cm (20) **£120-180**

51 Karl Scheid (German, 1929-2019), a pair of studio stoneware vases, each of slab-sided form, decorated with geometric motifs, impressed mark to the underside, h.21.5cm **£50-100**

52 An East German Kunsttöpferei Unterstab (KTU) blue and white glazed vase, circa 1960s, of tapered

form, impressed marks to the underside, h.20cm, together with a blue and white studio stoneware glazed ewer, indistinct impressed marks to the underside, h.21cm, and a black and white glazed studio stoneware vase, h.24cm (3) **£40-60**

53 A collection of studio pottery, to include; a West German pottery vase, h.13cm (6) **£40-60**

54 A collection of six Dutch Gouda pottery vases, each with floral polychrome decoration, largest h.18cm **£40-60**

55 A collection of Dutch Gouda pottery, to include a large vase, polychrome decorated with flowers, h.28cm (5) **£30-50**

56 Peter Lane (b.1932) - a studio stoneware dish, of square shape, having a mottled and striped glaze, incised mark to the underside, w.20cm **£40-60**

57 Three studio stoneware vases, each of geometric form, marked indistinctly to the underside, , largest h.12cm, together with a matching dish (4) **£30-40**

58 A collection of Ruscha Milano studio pottery dinnerwares (8) **£50-100**

59 A collection of various Ruscha Milano studio pottery wares, to include principally single-handled jugs and vases, various shaped and sizes, painted in tones of green, yellow, brown and blue, the largest h.37.5cm (16) **£300-500**

60 A 1970s Troika pottery Coffin vase, of slightly tapering form, opposing abstract stylised block decorated, painted in tones of blue and brown, painted marks verso, h.17cm **£80-120**

61 Martyn Gilchrist for Bembridge - a studio pottery vase, having a geometric blue and white glaze, h.26cm, together with a Brendingen studio pottery sculpture, having a grey and white spiral glaze, marked for Ella Biltoft and dated '99, h.15cm and a Royal Doulton Lambeth green glazed vase, impressed '7939' to the underside, h.10.5cm (3) **£40-60**

62 Martin Booth, a large studio pottery sculpture, of geometric shape, impressed mark to the underside, h.43cm **£50-100**

63 **Pirjo Nylander - a near pair of 1960s pottery vases**, each with mottled glaze and incised decoration, incised mark to the underside, h.37cm **£30-40**

64 **After Wassily Kandinsky - a studio pottery vase**, with polychrome abstract decoration, indistinct impressed mark to the underside, h.29cm **£40-60**

65 **John Maltby (1936-2020)**, a stoneware vase, with white glazed spot and abstract line decoration, signed to the underside, h.15.5cm **£200-300**



66 **Cari Zalloni (Austrian, 1937-2012)**, a collection of six pottery vases, each with relief geometric decoration, relief marks to the underside, largest h.25cm **£200-300**

67 **Cari Zalloni (Austrian, 1937-2012)**, a copper lustre vase, of geometric shape, relief marks to the underside, h.20cm **£30-50**

68 **Dorothy Hafner (b.1952) for Rosenthal**, a Flash series candlestick, printed mark to the underside, h.20cm, together with a Krautheim pottery circular vase, h.16m (2) **£30-40**

69 **Roberto Rigon (Italian) for Bertonecello**, circa 1960s, a collection of five stylised pottery vases, mottled cream and brown glaze, largest h.44cm (5) **£100-200**

70 **A studio pottery vase**, of globular form, brown splash glaze, indistinctly signed to the underside, h.18cm, together with a studio pottery jug, indistinctly marked to the base, h.36cm and a studio pottery bowl, dated 1980, dia.20cm (3) **£30-40**

71 **A collection of studio pottery vases**, to include; a Jackie Walton red glazed vase, incised mark to the underside, h.35cm (6) **£50-80**

72 **An Isle of Wight studio pottery vase**, 20th century, of ribbed ovoid form, inscribed 'Katucha Keane' to the underside, h.26cm **£30-40**

73 **A Royal Doulton flambé glazed bowl**, standing upon a circular foot, indistinct impressed marks to the underside, dia.27cm **£100-200**

74 **Two Royal Doulton red flambé figures of children**, each shown perched upon a rock, printed marks to the underside, largest h.13cm **£30-50**

75 **A studio pottery vase**, the rim with raised wavy decoration, indistinct impressed mark to the underside, h.36cm, together with two further slender studio pottery vases, largest h.42cm (3) **£30-50**

76 **A large studio pottery barrel and cover**, having a single curved scroll handle, finialled cover, incised decorated and underglaze floral painted in tones of brown and ochre, with cork stopper, painted monogram T.G. to lower unglazed edge, h.60.5cm, together with a large slip glazed stoneware charger by Millhouse Pottery, of dished form, dia.41cm (2) **£80-120**

77 **Bernard Rooke (b.1938) - a large studio pottery vase**, partially glazed, with raised opposing dragonfly decoration, incised monogram towards lower edge of one side, h.32cm **£60-90**

78 **Peter Fraser Beard (b.1951) - a large studio pottery vase**, with raised and textured repeating ground decorated in tones of turquoise, impressed monogram and studio stamp verso, h.38.5cm **£100-150**

79 **Peter Fraser Beard (b.1951) - a large studio pottery vase**, of slightly ovoid form, abstract geometric stylise decorated in tones of green, impressed monogram verso, h.31cm **£80-120**

80 **Peter Fraser Beard (b.1951) - a studio pottery vase**, of stepped slightly shouldered ovoid form, with all-over trailing decoration in tones of turquoise and green, impressed monogram verso, h.27cm **£70-100**

81 **Peter Moss (b.1940) - a ceramic studio specimen vase**, of U upper shape, opposing incised trailing stylised decoration, further incised signature to underside, h.29.5cm **£70-100**

82 An early 20th century blue glazed squat studio vase, h.24.5cm; together with an early 20th century Burmantofts twin handled pottery double gourd vase, monochrome decorated in deep red, incised monogram and numbered '194' verso, h.25cm (2) **£50-70**

83 Tessa Fuchs - a studio pottery vase, of mid-ovoid form, decorated with doves, raised monogram verso, h.24.5cm; together with a pair of footed studio bowls by Tessa Fuchs, each dia.17cm (3) **£60-80**

84 Guy Sydenham (1916-2005) for Poole Pottery - a large studio vase, partially pale glazed and incised centrally banded decorated, impressed marks, artists monogrammed and stamped number 'A193' verso, h.32.5cm **£120-180**

85 Guy Sydenham (1916-2005) for Poole Pottery - a studio pottery squat vase, ochre coloured underglaze decorated, with trailing and tapering running dog incised banded decoration, impressed and incised artists monogram verso, h.14.5cm; together with a further Guy Sydenham for Poole Pottery partially glazed miniature squat specimen vase, of pebble form, h.7cm (2) **£50-70**

86 Alan Clarke for Poole Pottery - a limited edition 'Millennium' large shouldered vase, h.33cm; together with a matching circular dished footed charger, dia.41.2cm; and a circular footed plate, dia.26.5cm, each with part-flambé decorated glaze and a further matt black finish, printed backstamps verso (3) (*with original boxes*) **£120-180**

87 A Poole Pottery 'Freeform' footed table bowl, of typical dished tapering form, stylised interlaced banded decoration to interior, printed marks verso, dia.36cm **£60-80**

88 A Poole Pottery studio footed jardiniere, with raised orange flambé upper border, printed marks and numbered '180' verso, h.18cm; together with a Poole studio footed dish, painted in tones of yellow and green, printed marks verso, dia.26.5cm (2) **£30-40**

89 A large 1930s Poole Pottery shouldered vase, all-over stylised bright colour floral painted, printed backstamp verso, h.33cm **£50-80**

90 Derek Clarkson (1928-2013) - a studio pottery vase, the tapering neck over an ovoid body, painted in pale tones in the Japanese taste, impressed monogram to outer edge of footrim, h.28cm **£60-90**

91 Edward Radford for Pilkingtons Royal Lancastrian - a 1930s pottery bulbous vase, of ribbed form, with pale blue monochrome finish, impressed marks, numbered '158; and incised artists monogram verso, h.22.5cm **£40-60**

92 A Pilkingtons Royal Lancastrian pottery squat vase, of shouldered form, the lustre decorated with floral stylised central decoration within banded borders, impressed and painted shield mark verso, h.13.5cm **£120-180**

93 A Pilkingtons Royal Lancastrian squat vase, of mid-bulbous form, with crystalline drop glaze decoration, impressed marks and numbered 2366 verso, h.8.8cm **£40-60**

94 In the style of Glen Lukens - a heavy studio pottery jug, of tapering form, sage coloured crackle glaze, unsigned, h.28cm **£40-60**

95 Karl Ens - a pair of porcelain parrots, each modelled perched on a stump, bright colour underglaze painted, with printed backstamps verso, the larger h.28.5cm, the smaller h.26.5cm **£80-120**

96 Karl Ens - a pair of perched porcelain kingfishers, one holding a fish in its beak, printed backstamps verso, each h.12cm **£50-70**

97 Carl-Harry Stålhane for Rostrand - a circa 1950s Swedish small pottery bowl, monochrome sage green painted, incised marks verso, w.11.6cm **£40-60**

98 A large studio pottery footed table bowl, with ribbed outer detail, abstract painted underglaze decoration, indistinctly signed verso, dia.33.5cm **£40-60**

99 Chris Carter (b.1945) - an extremely large antlered stoneware vase (2003), of slightly angular stylised form, raised monogram to underside, h.71.5cm *Note: Purchased from the Chris Carter Show, May/June 2003, at the Hart Gallery* **£500-700**

100 An extensive 1950s Midwinter Stylecraft 'Zambesi' pattern fashion tableware six-place dinner, breakfast and tea set, comprising; a large serving platter, six dinner plates, six side plates, gravy boat with saucer, six cereal bowls, six egg cups, teapot and cover, milk jug, sugar bowl, six teacups and saucers, six cake plates, and two further coffee mugs by Churchill Fine China, with black printed backstamps verso (49) **£200-400**

101 A large Moorcroft Hibiscus pattern pottery vase, of ovoid tapering form, underglaze painted and tube-line decorated, impressed marks and with original circular paper label verso, h.31.5cm **£100-150**

102 A contemporary Moorcroft pottery vase in the Portelet Bay (Red Orchid) pattern, designed by Carole Lovett, of shouldered slender baluster form, underglaze painted and tube-line decorated, impressed and painted marks, dated '2004' verso, h.31cm **£100-150**

103 A contemporary Moorcroft pottery vase, hibiscus and trailing leaf decorated, designed by Rachel Bishop, of outswept squat lower form, underglaze painted and tube-line decorated, impressed and painted marks, dated '2003' verso, h.20.5cm **£70-100**

104 A contemporary Moorcroft pottery double gourd vase in the Centaurea pattern, designed by Rachel Bishop, underglaze painted and tube-line decorated, impressed and painted marks, dated '2004' verso, h.23cm **£80-120**

105 A contemporary Moorcroft pottery bulbous squat vase in the Peony pattern, in tones of blue, designed by Paul Gibson, underglaze painted and tube-line decorated, impressed and painted marks, dated '99 verso, h.16.5cm **£70-100**

106 A contemporary Moorcroft pottery squat bellied vase in the Queen of the Night pattern, designed by Angi Davenport, underglaze painted and tube-line decorated, impressed and painted marks, dated '2001' verso, h.11.5cm **£60-80**

107 A large contemporary Moorcroft Pottery vase in the Moon Shadows pattern, of waisted form, underglaze painted and tube-line decorated, impressed and painted marks, titled 'trial' (this example a factory second) verso, h.40.5cm **£200-300**

108 A small contemporary Moorcroft pottery mid-bulbous bottle vase in the Rainy Daisy pattern, designed by Rachel Bishop, painted and tube-line decorated, impressed and painted marks, dated '2004' verso, h.13.5cm; together with a contemporary miniature Moorcroft squat baluster vase in the Snowdrop pattern, designed by Rachel Bishop, dated '2002' verso, h.5.5cm; and a contemporary Moorcroft pottery Hibiscus Moon pattern milk jug, designed by Sian Leeper, dated '2002' and numbered '127/250' verso, h.11.5cm (3) **£60-90**

109 A contemporary Moorcroft pottery twin handled bonbonniere in the Symphony pattern, designed by Emma Bossons, underglaze painted tube-line decorated, various impressed and painted marks, dated '2003' verso, h.22cm **£100-150**

110 A collection of four contemporary Moorcroft pottery circular dishes, in the following patterns; Triple Choice by Rachel Bishop, New Forest by Rachel Bishop, Lily Plume by Emma Bossons, and Panache by Sian Leeper, each with impressed and painted marks verso, variously dated, each dia.12cm (4) **£60-80**

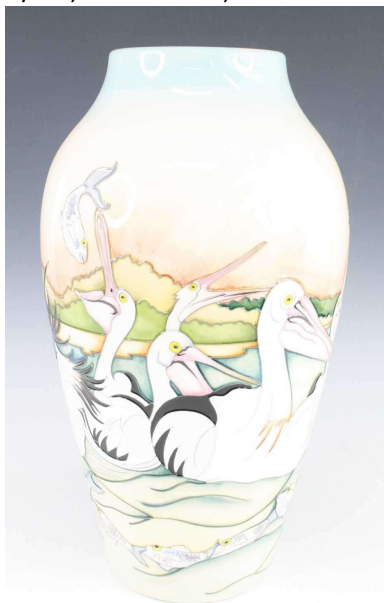
111 A large contemporary Moorcroft Pottery vase in the Sichuan Giant Pandas pattern, of waisted form, underglaze painted and tube-line decorated, impressed and painted marks, titled 'trial' and dated 8.4.16 verso, h.40.5cm **£250-350**

112 A contemporary Moorcroft pottery wall plaque, in the La Garenne pattern, designed by Emma Bossons, housed in a lacquered frame, impressed marks and dated '2005' verso, 43.5 x 12.5cm **£40-60**

113 A contemporary Moorcroft pottery shouldered vase, in the Anna Lily pattern, designed by Nicola Slaney, typically underglaze painted and tubeline decorated, impressed and painted marks dated '98 verso, h.22cm **£100-150**

114 A contemporary Moorcroft pottery slender baluster vase, in the Anna Lily pattern, designed by Nicola Slaney, typically underglaze painted and tubeline decorated, impressed and painted marks dated '98 verso, h.28cm **£100-150**

115 A large contemporary Moorcroft Pottery vase in the Pelican Parade pattern, designed by Kerry Goodwin, of slightly shouldered gently tapering form, underglaze painted and tube-line decorated, with impressed and painted marks verso, this example numbered '16/20', dated 2018, h.37cm **£400-600**



116 A large contemporary Moorcroft Pottery vase in the May Queen pattern, of ovoid slender tapering form, underglaze painted and tube-line decorated, incised and painted marks, titled 'trial' and dated 18.10.17 verso, h.45cm **£600-800**

117 A collection of nine various Moorcroft Collectors Club bound editions and other Moorcroft Pottery related literature **£30-50**

118 Charles Schneider - an Art Deco smoky glass shallow bowl, with acid etched stylised sectional decoration to the underside, acid etched signature verso, dia.35cm **£80-120**

119 A heavy green tinted studio glass decanter and stopper, the stopper of long elongated tapering form to lower knopped detail, the decanter of shouldered flat-sided tapering form, unsigned, overall h.57.5cm **£50-70**

120 A heavy studio glass vase, having cased and trailing decoration in tones of green and brown, of gently tapering and mid-bulbous form, etched Nick Ohly and dated 2006 verso, h.27cm **£40-60**

121 A studio glass vase, with relief nailhead decoration, graduated blue to green colour, h.32cm, together with three further coloured glass sculptures (4) **£40-60**

122 A heavy studio glass footed table bowl, having cased and trailing decoration in tones of brown and blue, with bubble inclusions, unsigned, dia.20.5cm; together with a heavy blue tinted glass oval table bowl, w.27cm (2) **£30-50**

123 A collection of heavy studio glass, to include; a blue tinted bulbous vase with white flecked inclusions, h.14cm; a purple tinted heavy slightly shouldered squat vase, h.14cm; a Murano bubble inclusion ruby and green tinted ovoid squat vase, h.10.5cm; a heavy slightly waisted stem vase, h.21cm; and an iridescent and gilt stylised decorated paperweight, h.7.5cm (5) **£40-60**

124 Isle of Wight studio glass, to include; a circular squat vase with concentric trailing decoration, label for Corkindales, dia.12.5cm; a ruby bulbous vase with stylised gilt stencilled decoration to body, labelled verso, h.11cm; and a blue glass mug with gilt stylised stencil decoration to body, label verso, h.12cm (3) **£40-60**

125 Mdina studio glass, to include; a bubble inclusion footed bowl, of green and turquoise colour scheme, having applied stylised swirl decoration to body, dia.14.5cm; a copper toned vase with pinched neck and applied circular motif, h.21cm; and a blue tinted squat vase with applied raised decoration, h.11cm (3) **£30-50**

126 A collection of five various studio glasswares, to include; a circular squat vase with folded flattened rim, dia.13cm; a footed squat vase, h.11.5cm; a flattened bellied perfume bottle and stopper, dia.15cm; a bulbous squat vase, h.10cm; and a squat finger bowl, w.12cm, each with cased trailing decoration (5) **£40-60**

127 A group of studio glass, to include; a copper tinted moulded owl shaped moneybox, h.16.5cm; a moulded green tinted glass model fish, length 31cm; a Murano orange tinted swan form table bowl, h.26cm; and a heavy glass standing figure with deep cased decoration, h.22cm (4) **£30-50**

128 **A moulded and pink tinted glass teardrop ceiling pendant**, decorated with graduated lozenge design, with brass hanging hook, overall h.34.5cm; together with a ruby and orange heavy glass lamp base, of stylised tapering form, h.26.5cm (2) **£20-30**

129 **A collection of studio glass effects**, to include; five various vases, two with tinted and applied abstract stylised decoration, the largest h.23.5cm; two further vases with green cased and trailing decoration; an iridescent vase with pink spiral trailing decoration; and a Paul Kemp novelty footed perfume bottle and stopper in tones of blue, yellow and purple, etched signature and dated '97 verso, h.26.5cm (5) **£50-80**

130 **A set of four Hadeland Glassverk clear moulded leaf dishes**, each 17 x 12.5cm; together with a Strombergshyttan Swedish crystal glass desk weight, incised signature verso, h.15.5cm; a Kosta Boda elongated stemmed vase with weighted base, h.24cm; and a Whitefriars Silver Jubilee wine glass, h.19cm (7) **£40-60**

131 **Helena Tynell (Finnish, 1918-2016) for Riihimäki - a 1960s blue moulded glass 'Emma' vase**, of bulbous flat-sided and moulded form, h.25cm; together with a further Riihimäen Lasi blue tinted waisted studio vase, h.28cm; and a pewter grey tinted glass liqueur set, comprising mallet shaped decanter and stopper, and a set of four matching footed liqueur glasses, with engraved central banded decoration, decanter and stopper h.17cm, glasses h.7cm (7) **£40-60**

132 **Walther Kristallglas - two art glass vases**, of circular form, bearing original paper labels, largest h.11cm **£20-30**

133 **An Orrifors heavy clear crystal glass faceted table bowl**, etched verso, w.21cm; together with a Swedish heavy clear glass vase, having engraved full-length standing figure to body, h.29cm; a Holmegaard clear glass dish shaped table bowl, 31 x 29cm; and a Holmegaard soft blue tinted vase of teardrop form, h.25.5cm (4) **£40-60**

134 **Geoffrey Baxter (1922-1995) for Whitefriars - a moulded ruby glass Nailhead vase**, of square form with opposing decoration, h.20cm **£40-60**

135 **Geoffrey Baxter (1922-1995) for Whitefriars - a moulded Aqua glass circular table bowl**, with naturalistic exterior, dia.13.5cm **£30-40**

136 **Setsuko Ogishi (Japanese-Australian, b.1954) - a large studio glass vase**, cranberry with 'Tutti-Frutti' stylised inclusions, etched signature verso, h.30cm **£80-120**



137 **A WMF Ikora glass shallow bowl**, with folded rim, decorated with red and white inclusions, ground and polished foot, dia.36cm **£80-120**

138 **An Art Nouveau style silver-clad dressing table mirror**, of shaped rectangular form repousse decorated with trailing daffodils, maker Keyford Frames Ltd, London 1986, approx overall h.30cm **£30-50**

139 **A WMF Art Deco silver plated easel dressing table mirror**, the rectangular plate within a reeded border, stamped verso, 28 x 17cm **£150-200**

140 **An early 20th century WMF silver plated freestanding hat-pin holder**, the supports modelled as bust winged maidens, with inset pad, stamped marks, and raised on white marble angled integral base, h.13.2cm; together with a silver topped and a white metal topped hat-pin (3) **£80-120**

141 **An Art Deco chromed metal travelling cocktail shaker**, housed in a tan leather button case, the shaker and cover containing fruit-squeezer, box and cover, and four graduated measures, each with gilt interior, enclosed h.12cm, with indistinct stamp to underside of footrim **£60-90**

142 **An Art Deco silver and yellow guilloche enamel inset pocket travelling compact**, with mirrored interior, having removable powder, hinged lipstick holder and

further enclosed compartment, engine turned detail, maker HC Freeman Ltd, import mark London 1929, 12.2 x 4.8cm **£120-180**

143 An Art Deco silver cigarette case, of rectangular form with canted corners, having hinged action and push-button thumbpiece, each side all-over engine turned and having central band with geometric fan motif to each end, gilt-washed interior with elastic holder, inscribed to the interior, maker D Bros (possibly Davies or Dingley Brothers), Birmingham 1931, approx 10 x 8.5cm, 5ozt **£60-90**

144 An Edwardian silver cigarette case, of curved rectangular form, having all-over engine turned line decoration, push-button hinged mechanism, gilt-washed interior and elastic holding ribbon, makers mark worn, London 1906, 4.4ozt, approx 10 x 8.5cm **£40-60**

145 A late Victorian silver and enamel 'Royal Flush' vesta case, of rectangular form with sprung hinged cover and strike base with loop attachment, one side enamelled with five cards representing a Royal Flush in hearts, maker Sampson Mordan & Co (Sampson Mordan II), London 1889, length 5.75cm, 1.4ozt **£100-150**



146 An Asprey of London silver cigarette case, of all-over engine turned rectangular form with applied monogram to top right corner, having slide to open mechanism, gilt-washed interior with holding elastic ribbon, maker Asprey & Co Ltd, London 1967, 13.5 x 8.5cm, 6.1ozt **£100-150**

147 An Asprey silver table cigarette box, of rounded square form, the hinged cover having engine turned decoration and raised thumbpiece, wood-lined interior and morocco inset base, maker Asprey & Co Ltd, Birmingham 1928, approx 9 x 9 x 3.5cm **£80-120**

148 A George V silver table cigar box, of rounded rectangular form, having slightly domed lid with inscription to the centre, cedar-lined gilt-washed

interior and morocco inset base, maker probably Frederick William Hentsch, London 1913, dimensions 9.5 x 13.5 x 5.5cm **£100-150**

149 An early 20th century silver novelty jewellery box, in the form of a dressing table, having a serpentine front with two dummy handles, the hinged cover opening to reveal velvet lined interior, maker A & J Zimmerman Ltd (Arthur & John Zimmerman), Birmingham 1909, w.9.25cm **£100-150**

150 A George V silver miniature kettle, of tapered rounded form with angular spout and upright handle, the lift-off stepped circular cover having acorn finial, inscribed with the Watson crest (hands supporting a sprouting oak tree) to one side, maker Hamilton & Inches, Edinburgh 1915, h.10.5cm (including handle), 5.3ozt **£50-80**

151 An Art Deco silver three-piece bachelors tea set by Mappin & Webb, comprising: teapot with hinged cover, ebonised finial and scroll handle, circular sugar bowl, and single handled cream jug, each raised on circular stepped foot, Birmingham 1921, gross weight 14.5ozt, teapot length 20cm (3) **£200-300**

152 A cased set of six silver and enamel coffee bean spoons, each having enamelled shell decorated bowl in varying colours, the plain straight stems with an ebonised coffee bean to the terminals, maker William Suckling Ltd, Birmingham 1939 & 1940, in silk and velvet lined fitted double-catch case with hinged cover, spoon length 9.5cm, gross spoon weight 1.4ozt **£60-90**

153 A 1960s silver 'poppy' dish, as an open flower head with petal form outer and textured raised centre, maker A.J.H., London 1963, dia.15cm, 8.4ozt **£80-120**

154 A late Art Deco silver octagonal salver, having a raised gadrooned edge, on stylised half-reeded stepped feet, maker Walker & Hall, Sheffield 1942, approx 25ozt, dia.27cm **£300-400**

155 A pair of Art Deco silver four-division toast racks, of rounded rectangular form with five upper bulbous curved dividers and central loop handle, standing upon four ball feet, maker Cooper Brothers & Sons Ltd, Sheffield 1936, each length 10cm, gross weight 11.4ozt **£100-150**

156 **An Art Deco silver twin handled sugar bowl**, of shaped tapering rectangular form with angular handles, standing upon a stepped curved rectangular base, maker S Blanckensee & Son Ltd, Chester 1939, h.7cm, length 12cm (excluding handles), 7.3ozt **£80-120**

157 **An early 20th century Irish silver rose bowl**, of deep conical form with curved turreted rim (lacking inner grille), to a stepped foot, maker West & Son, Dublin 1912, dia.15cm, 15ozt **£200-250**

158 **An Art Nouveau silver pedestal bowl**, of circular form to a raised foot, cast with upper and lower bands of scrolling shells and leaves, one side engraved with personalised inscription, maker Hawksworth, Eyre & Co Ltd, London 1910, dia.17.5cm, 16.8ozt **£200-300**

159 **A George V silver swing handle lidded ice bucket**, of conical form with a flaring wavy-edged rim, having shaped curving swing handle and standing upon three shell capped hoof feet, the lift-off cover having button finial, maker Alexander Clark & Co Ltd, Birmingham 1914, dia.14.5cm, h.19.5cm (handle down), 19.1ozt **£250-350**

160 **An Arts & Crafts silver specimen tyg vase**, having scroll handles, the body of trumpet form with hammered relief and strapwork decoration, maker Julius Blanckensee, London 1902, 5.5ozt, h.15cm **£80-120**

161 **Dr. Christopher Dresser (1834-1904) for Hukin & Heath**, A silver teapot of slightly tapered circular form, having a wicker bound handle and domed cover with button finial, bearing registration mark to the underside, Jonathan Wilson Hukin & John Thomas Heath, London 1880, 12.7ozt **£500-800**

162 **A late Art Deco silver pedestal cup**, of tapering conical form to a stepped foot, having angular handle, maker E Silver & Co, Sheffield 1945, further stamped 'Made in England' verso, h.10.5cm, 7.8ozt **£100-150**

163 **An Arts & Crafts silver sweetmeat dish**, having a planished surface, the boat shaped dish with twin loop handles, raised on swepth square support, A.E Jones, Chester 1920, 6 ozt **£250-400**

164 **An Aurum silver Chichester Cathedral goblet**, number 411 of a limited edition of 600 commemorating

the ninth centenary of the founding of Chichester Cathedral in 1075, of tapering trefoil form with wheatsheaf cast silver-gilt base further decorated with an applied band of silver birds, having gilt-washed interior, maker Desmond Clen-Murphy for Aurum, London 1976, h.16.5cm, 10.3ozt, in original box with commemorative booklet **£200-300**

165 **Two contemporary silver canisters and covers**, the larger of plain oval form with naturalistic chased detail to foot, w.7.5cm, the smaller of plain circular form with floral and ropetwist finial, both with makers mark SP, London 1991, gross weight 8.3ozt (2) **£100-150**

166 **An Art Deco silver footed comport**, having lobed edge and pierced stylised cloud and star decoration, maker Mappin & Webb, Sheffield 1939, 12.3ozt, dia.22cm **£180-220**

167 **A circa 1900 novelty silver knife-rest in the form of an elongated Dachshund**, maker FBC Ltd, Birmingham 1903, 78g, length 9cm **£70-100**

168 **A pair of Edwardian silver novelty figural salt and pepper shakers**, one modelled as a chauffeur wearing long buttoned coat, flat cap and driving glasses (based upon a character in the popular musical comedy Mr Popple of Ippleton), the other as a bonneted woman wearing a sandwich board advertising 'The Taylors Quality Silver' (the female figure is sometimes depicted as a Suffragette bearing Votes for Women slogans), each having removable heads with piercings to the tops, makers Cornelius Desormeaux Saunders & James Francis Hollings (Frank) Shepherd, Chester 1908, heights 8.75cm & 8.5cm, gross weight 3.1ozt (2) **£300-500**



169 **An Art Nouveau silver belt**, comprising eleven (including buckle ends) floral cast and pierced shaped rectangular sections with trefoil cast double links in-between, maker Horton & Allday, Birmingham 1902, length 68cm, 6.4ozt **£80-120**

170 **An Art Nouveau silver brooch**, of oval shaped outline, decorated with raised female profile portrait within foliage, maker Jones & Crompton, Birmingham 1901, 30g, 4.5 x 6.2cm **£40-60**

171 **Harald Nielsen (1892-1977) for Georg Jensen - a sterling silver 'Moonlight grape' dress ring**, surmounted with a butterfly with inset diamond points, stamped marks to inside of band, numbered 53 and with London import marks, size G **£60-80**

172 **Georg Jensen - a sterling silver and yellow metal ring**, design No. 311, size M, together with one other, design No. 98, size N, 21.8g (2) **£100-150**

173 **David Andersen - a 1970s Norwegian sterling silver and enamel decorated pansy brooch**, the enamel in tones of purple, the reverse gilt finished and with raised marks David-Andersen Norway Sterling 925S, 4.4 x 4.8cm **£80-120**



174 **Niels Erik From - a 1970s Danish silver dress ring**, of Brutalist angular abstract form, stamped 'From 925S' to underside, size K, 17g **£40-60**

175 **Niels Erik From - a 1970s Danish silver linked bracelet**, the plain panels of oval form, with push-clasp, stamped marks to underside, with London import date letter for 1973, length 19cm **£150-200**

176 **A 1970s Scandinavian silver oversized garniture**, comprising; brooch with central inset faux amber cabochon, 10.5 x 9.5cm, a linked bracelet, length 20cm, and a pair of earrings, each 3.5 x 2.8cm, each of opposing floral stylised form (4) **£50-100**

177 **A mid-20th century Norwegian silver and guilloche green enamel inset sectional necklace**, of gatelink form, with push-clasp, stamped 'Sterling Norway 830S' verso, length 35cm **£80-120**

178 **A 1970s Lapponia of Finland sterling silver necklace**, of linked opposing abstract form, stamped marks to underside of clasp, 75g, dia.16cm **£150-250**

179 **Rachel Gogerly - a contemporary silver and enamel inset garniture**, comprising; necklace with five pear shaped links, on further finelink chain to loop clasp, length 40cm; a pair of pear shaped and enamel inset stud earrings, each 2.5 x 1.8cm; and a stepped flower head brooch with drop pendant, max dimensions 5 x 5cm (3) **£120-180**

180 **Philip Treacy (b.1967) - a fabric handbag after Andy Warhol**, the zipped compartment with interior Marilyn Monroe repeating images, with further interior label, 29 x 29cm **£40-60**

181 **A Mulberry black leather Bayswater handbag**, with brass 'postman's' lock and further hardware, enclosing a single zipped compartment, twin pouches, suede lined interior, the label numbered '565321' to reverse, approx 29 x 35cm **£150-200**



182 **A Chanel limited edition gift set**, housed in a fitted box, with removable cover enclosing various No.5 products including powder box and cover, pocket spray etc, with authenticity card stamp numbered '10218184', this example numbered '317/382' **£150-250**

183 **Mid-20th century African School - a lacquered and carved hardwood stylised figural study**, fashioned as conjoined sections, h.89cm; together with a further similar lacquered hardwood twin section stylised

sculpture, h.67cm; and a driftwood stylised figure group, h.82cm (3) **£100-200**

184 **Contemporary African school - a dark brown painted composite wall panel**, depicting stylised tribal figures, raised on a painted backboard, unsigned, 59 x 85.5cm **£50-100**

185 **A Benin style bronze standing tribal warrior**, h.19cm; together with a cast alloy seated model Scottie dog mascot, h.8.5cm; an African bronze model crab; and a similar centipede (4) **£40-60**

186 **Nigerian School - Head of a woman**, dark bronzed composite, naturalistically modelled and raised on a natural wood integral circular base, unsigned, overall h.50cm **£80-120**

187 **A Nigerian carved and mottled grey stone figure group**, modelled as a nude woman piggybacking a man, unsigned, h.84cm **£100-200**

188 **Attributed to Emmanuel Taiwo Jegede (Nigerian, b.1943) - Bust group with clasped hands**, chip-carved hardwood, unsigned, h.47cm **£100-150**

189 **Emmanuel Taiwo Jegede (Nigerian b.1943) - The Spirit of the Public House**, bronze, with deep-brown patina, incised detail, raised on a limed wood square integral base, incised artist signature, dated 1982 and numbered 7/9 to rear lower edge of neck, bronze h.50cm, overall h.57cm **£300-500**



190 **Emmanuel Taiwo Jegede (Nigerian b.1943) - The Spirit of the Public House**, bronze, with green-brown

patina, incised detail, incised artist signature and AP (artists proof) to rear lower edge of neck, bronze h.51cm **£300-500**

191 **Emmanuel Taiwo Jegede (Nigerian b.1943) - Twin grotesque heads joined by upper relief carved bowl**, incised and chip-carved hardwood, raised on integral hardwood chamfered base, unsigned, overall h.67cm **£200-400**

192 **Emmanuel Taiwo Jegede (Nigerian b.1943) - Tribal head study**, bronze with all-over green patina, incised detailed and naturalistically modelled, raised on driftwood square deep base, bronze h.48cm, overall h.70cm **£300-500**

193 **Emmanuel Taiwo Jegede (Nigerian, b.1943) - Four various abstract bronze figure groups**, of figural and strapwork form, each raised on charred naturalistic wood bases, the largest h.35.5cm **£200-400**

194 **Emmanuel Taiwo Jegede (Nigerian, b.1943) - a chip-carved relief decorated hanging wall panel**, depicting opposing stylised figure studies, incised signature and dated '1970' to left hand centre edge, 66 x 95cm **£150-250**

195 **Richard Fisher (b.1925) - a bronzed composition model of an otter**, in recumbent pose and resting upon naturalistic rockwork, etched 'Fisher' to one end, length 26cm **£40-60**

196 **A contemporary bronze model of a bull**, black painted with white detail, h.19cm, length 15cm; together with a similar smaller example, h.13cm, length 11cm; and a contemporary bronze model of a ewe, with mixed greenish-brown patina, length 17cm (3) **£80-120**

197 **Salvador Sos (Spanish, contemporary) - a bronze model of a reindeer**, modelled in a standing pose looking behind, in Cubist style, housed on a moulded wood rectangular base, with label titled 'Ciervo', bronze h.16cm, length 21cm **£60-90**

198 **A pair of early 20th century Continental patinated spelter model owls**, each in standing pose with glass inset eyes, h.18.5cm **£60-90**

199 **A French Art Deco bronze sculpture modelled as three perched kingfishers on reeds**, raised on polished

slate rectangular integral base, h.24cm, w.41.5cm **£40-60**

200 **Contemporary school - an abstract cast bronze figure**, unsigned, 31 x 23.5 x 21cm **£80-120**

201 **A contemporary bronzed metal sculpture**, modelled as a balletic female nude, to integral circular tapering base, unsigned, h.43cm **£40-60**

202 **Rosemary Cook (British, b.1952) - At the Picnic**, bronzed resin, modelled as a seated woman with her arms crossed, incised signature to upper area of underside right leg, h.30cm, length 28cm **£150-200**

203 **Angela Palmer (British, contemporary) - nude reclining female figure**, plaster with painted brown finish, naturalistically modelled, incised signature to rear, h.31cm, length 51.5cm **£100-150**

204 **A collection of four various circa 1960s carved alabaster sculptures**, two of pierced square composition, the larger 30.5 x 23cm, the smaller 26 x 21cm, the third of figural stylised form, raised on lacquered naturalistic wood plinth, overall h.48.5cm, the fourth in the form of a bird, raised on copper rod to naturalistic wood base, h.26.5cm (4) **£100-200**

205 **A large patinated plaster portrait nude bust group of a woman**, naturalistically modelled, unsigned, h.59cm, w.41cm **£70-100**

206 **Emile Muller (French, 1823-1889) - a mottled red glazed head and shoulders bust of a lady**, upon a socle plinth, h.38cm **£100-200**

207 **Catido (French, b.1945) - a studio pottery head and shoulders bust of a woman**, modelled wearing a bonnet and a fringed blouse, incise decorated and painted in muted tones, signed to inner edge of base, h.39.5cm, w.39cm **£50-80**

208 **A large studio pottery stylised head**, after Amedeo Modigliani, decorated in gilt and green, h.50cm **£40-60**

209 **A contemporary Estonian ceramic vase modelled as a female nude torso**, of stylised form, painted in tones of grey, incised artist signature, titled 'Tallinn' and dated 1992, numbered '50/10' to underside, h.36cm **£40-60**

210 **Michael Lythgoe (b.1950) - Grebe (1996)**, carved softwood, monochrome polychrome decorated, signed, titled and dated verso, h.39cm, length 60cm **£100-150**

211 **An Art Deco patinated spelter figural lamp**, having an alabaster removable shade, modelled as a semi-nude seated woman raised on mottled marble integral rectangular base, max h.27cm, length 37.5cm; together with an Art Deco patinated spelter model of a flower girl, in seated partially recumbent pose and holding a basket of flowers, raised on rouge marble integral rectangular base, h.21cm, length 32cm (2) **£120-180**

212 **A large contemporary silvered composite table lamp in the Art Deco style**, modelled as a nude female standing figure having arched back and standing on tiptoes, holding a frosted crackle glass globe shade, raised on black finished circular stepped socle, overall h.68cm **£70-100**

213 **Christian Wallace - a layered wood lacquered and cabochon inset table lamp**, of ovoid form, signed to lower area of body, h.35cm (excluding fittings) **£200-300**

214 **Herbert Terry - a mid-20th century grey painted metal anglepoise lamp**, having typical adjustable rotating action, with removable shade, raised on a flattened domed circular foot, lower arm length 36cm, upper arm length 30.5cm **£40-60**

215 **Herbert Terry - a yellow painted metal anglepoise lamp**, model No.1227, of hinged and rotating form with removable shade, raised on a stepped square base with opposing stamp marks, circa 1940s, lower support length 35.5cm, upper support length 31cm **£50-70**

216 **A Cartier gilt metal alarm clock**, the case of arched form with hinged strut support, the plain white dial with Roman numerals, signed 'Cartier Paris', the brushed brass rear with further stamped marks and numbered '01317', and twin blue glass cabochon winders, 8.5 x 7.5cm **£150-200**

217 **A 1970s Tiffany & Co brass cased desk clock**, having a brushed chapter ring on plain white dial stamped 'Tiffany & Co Swiss', within further brushed brass and lacquered case, the rear door enclosing

replacement quartz movement, embossed 'M.H. May 1974' to top, 14.7 x 10.2cm **£50-70**

218 An Arts & Crafts copper and brass mantel clock, circa 1900, the plain circular dial having black finished chapter ring with gilt Roman numerals, with inset oval cabochon proud hammered copper opposing mounts, with winding hole for an eight-day movement, the rear backplate stamped '9215', h.31cm, w.26cm **£100-150**

219 An Art Deco Vitascope Industries Ltd electric diorama clock, circa 1940s, housed in a cream bakelite case with gilt metal applied chapter ring and single hand, with operational switches to backplate (not currently working), h.32cm, w.27cm, d.16.5cm **£100-200**

220 Attributed to Connell of Cheapside - an Arts & Crafts pewter and cabochon enamel inset lidded single handled jug, the thumbpiece hinged cover over pinched and domed lower body, impressed Pewter and numbered '0603' verso, h.16.2cm **£70-100**

221 David Veasey for Liberty & Co, a tudic pewter vase, shape No. 010, relief decorated with stylised flowers and 'For Old Times Sake', bearing marks to the underside, h. 20cm **£50-80**

222 An Arts & Crafts embossed and hammered cooper panel, modelled as a winged putti with horn, 26 x 72cm **£50-70**

223 An Art Deco brass oval planter in the manner of WMF, lacking liner, with later inset glass base, all raised on ball feet, unknown factory mark verso, w.26.5cm (excluding handles) **£60-80**

224 A 20th century copper and brass quatrefoil wine cooler, with removable central cover, twin carry handles, raised on integral circular stepped base, h.23.5cm, dia.32.5cm **£120-180**

225 Three Georg Jensen Design copper and polished steel saucepans, two with lids, each stamped verso, dia. 25cm, 20cm and 14.5cm (3) **£60-80**

226 An Art Deco chrome smoker's stand, the branch arms supporting integral ashtray and circular disced platform, raised on cloud circular stepped base, h.70cm **£40-60**

227 After Josef Lorenzl - a pair of Art Deco gilt patinated art metal figures, each modelled as semi-nude ballet dancers, raised on onyx bases, h.22cm **£100-150**

228 Josef Lorenzl (Austrian, 1892-1950) - an Art Deco cold painted bronze model of a female nude, modelled standing on tip-toes on one leg, her arms outstretched, to an integral domed support signed 'Lorenzl', of silvered patina, raised on further veined onyx square stepped base, overall h.25.2cm **£800-1,200**

229 Josef Lorenzl (Austrian, 1892-1950) - an Art Deco cold painted bronze model of a female nude, modelled in a balletic pose standing on one leg to an integral dome signed 'Lorenzl', of silvered patina, raised on further veined onyx cylindrical domed base, overall h.35cm **£800-1,200**

230 An early 20th century enamel on metal double-sided advertising sign titled 'Breakdown Service Association', the flange with five punched affixing holes, manufactured by Franco, 53 x 38cm **£120-180**

231 An early 20th century enamel on metal double-sided advertising sign titled 'Pratt's Petrol & Oils', the flange with four punched affixing holes, 45.5 x 56.5cm **£200-300**



232 An early 20th century enamel on metal advertising titled 'Corona Sparkling Drinks and Fruit Squashes', with perimeter affixing holes, 51 x 76.5cm **£120-180**

233 An enamel on metal advertising sign, titled 'Weights Cigarettes...For More Pleasure', 23 x 76cm **£80-120**

234 **A vintage enamel on metal double sided advertising sign 'Agent For Lyons' Tea**, 23 x 42cm **£50-80**

235 **An enamel on metal advertising sign, titled 'Hudson's Soap The time and money saver'**, 21.2 x 33cm **£40-60**

236 **An enamel on metal advertising sign 'Veno's Lightning Cough Cure'**, 61 x 38cm **£80-120**

237 **An enamel on metal advertising sign 'Sunlight Soap'**, 30.5 x 46cm **£50-80**

238 **An enamel on metal advertising sign 'Daily Mirror, Best All Along The Line'** 35.5 x 117cm **£80-120**

PICTURES

245 **§ Jonas Plosky (1940-2011) - Cadgwith, Cornwall**, oil on board, signed lower right, bearing artist's label verso, 61 x 76cm **£300-500**

246 **Peter Bibby (20th century) - Abstract Composition**, pastel on paper, signed and dated '82 lower left, 55.5 x 76cm **£50-100**

247 **Walter Sickert RA (1860-1942) - Vision Volumes and Recession, a Portrait of Roger Fry**, etching, visible sheet 21 x 12cm *Literature: Sickert: The Ruth and Joseph Bromberg Collection p.219* **£300-500**

248 **Patricia Sadler (contemporary) - Daisies in a jug**, acrylic on board, signed and dated '89 lower right, 51.5 x 54cm **£100-200**

249 **§ William Heaton Cooper RA (1903-1995) - Mountain View**, watercolour on paper, signed lower left, 38 x 56cm **£300-500**

250 **Richard Weisbrod (1906-1991) - Rural Landscape**, oil on board, 44 x 85cm **£80-120**

251 **Tom Hughes (b.1965) - Towards Trafalgar Square**, oil on board, signed and dated '16 lower right, bearing gallery label verso, 24.5 x 29.5cm **£80-120**

252 **Lincoln Seligman (b.1950) - Turtle Tracks**, acrylic on paper, signed lower right, bearing gallery label verso, 29 x 21.5cm **£50-100**

253 **Anthony Day (1922-2023) - Coveney Fields II**, tempera, signed lower left, 45 x 65cm **£50-80**

254 **Hermione Hammond (1910-2005) - Skate Fishing, Waxham Norfolk**, oil on board, signed lower left, 15 x 25.5cm **£80-120**

255 **Hermione Hammond (1910-2005) - Rylston Road, Fulham**, pen, ink and watercolour on paper, signed lower left, dated 11/75 lower right, 13 x 21cm, together with two other works by the artist; A Mullah, pen, ink and watercolour on paper, signed and dated 5/74 lower left; Fishing scene, etching, signed in pencil to the margin, visible sheet 8.5 x 18cm (3) **£50-100**

256 **Hermione Hammond (1910-2005) - St Mark's Square, Venice**, oil on card, unsigned, 19 x 24cm **£80-120**

257 **§ William Heaton Cooper RA (1903-1995) - View of a Bay**, watercolour on paper, signed lower right, 37.5 x 55.5cm **£300-500**

258 **Michael Coates (b.1937) - North Gates, Leicester**, gouache on paper, signed in pencil lower left, bearing gallery label verso, 24.5 x 34cm **£80-120**

259 **David Wheeler (b.1952) - The Abbey Gate**, oil on canvas, signed verso, 100 x 100cm **£200-300**

260 **Lillias August RI (b.1955) - Around the Tower**, watercolour on paper, signed lower right, 15.5 x 44.5cm **£80-120**

261 **Gordon Geza Marich (Hungarian, 1913-1985) - View of a Lake**, oil on canvas, signed lower right, 19 x 24cm **£40-60**

262 **Angela Verren-Taunt (1930-2023) - Arctic Loom**, acrylic on panel, inscribed verso, 16 x 29cm **£40-60**

263 **Raymond Solari (French, 1946-1987) - Paysage Provence**, oil on canvas, signed lower right, inscribed verso, 20.5 x 25.5cm **£50-100**

264 **Tory Lawrence (1938-2024) - Sheep on Stubble**, oil on canvas, signed with initials and dated '93 lower right, inscribed and bearing gallery label verso, 25 x 30cm **£120-180**

265 **Edwin La Dell (1914-1970) - The Apple Tree**, lithograph in colours, signed, titled and inscribed 'artist proof' in pencil to the margin, visible sheet 41 x 61.5cm **£50-70**

266 **Blair Hughes-Stanton (1902-1981) - Summer Storm**, wood engraving printed in colours, signed and dated '59, titled and numbered '8/40' in pencil to the margin, visible sheet 51 x 27cm **£100-150**

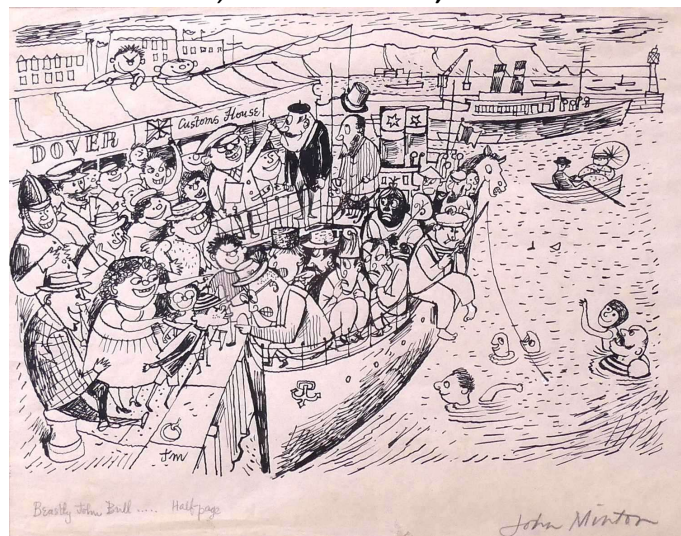
267 **Blair Hughes-Stanton (1902-1981) - The Cove**, linocut in colours, signed and dated '60, titled and numbered '10/36' in pencil to the margin, visible sheet 73.5 x 46cm **£70-100**

268 **Marcel Mortier (Belgian, 1919-2005) - North African Figures in a Market Square**, oil on board, signed lower right, 38.5 x 49cm **£100-150**

269 **Henri Grandjean (French 20th century) - Peonies**, oil on canvas, signed lower right, 39 x 31cm **£80-120**

270 **§ David Tindle RA (b.1932) - African Violets with Rose Petals**, oil on canvas, signed, titled and dated '92 verso, 29 x 24cm **£500-700**

271 **§ John Minton (1917-1957) - Beastly John Bull Half Page**, ink on paper, signed in pencil lower right, 22 x 28cm *Provenance: Christies, Modern British Pictures, 28th March 1996, lot 210A* **£750-1,000**



272 **§ Henry Mayo Bateman (1887-1970) - Curling cartoon illustration**, ink, pencil and wash on paper, inscribed 'To Stuart Wood from H.M. Bateman 1912', 38 x 26.5cm **£500-700**

273 **§ Nick Walker (b.1969) - Face (2003)**, giclee print on canvas, signed with monogram and numbered '112/195' in pen, 43 x 60cm **£500-700**

274 **Ivor Abrahams RA (1935-2015) - Siren Standing**, mixed media on cut paper, signed with initials and dated '94 lower left, mounted to wove sheet, signed and dated '94 lower left, sheet 56.5 x 76cm **£200-300**

275 **Ivor Abrahams RA (1935-2015) - Siren Reclining**, mixed media on cut paper, signed with initials and dated '94 lower left, mounted to wove sheet, signed and dated '94 lower left, sheet 59 x 79cm **£200-300**

276 **§ Sir Stanley Spencer CBE RA (1891-1959) - Study for Christ Preaching at Cookham Regatta**, pencil on paper, Stanley Spencer Studio Sale blindstamp lower left, bearing 'Anthony Hepworth Fine Art' label verso, 23.5 x 30.5cm **£300-500**

277 **§ James Boswell (New Zealand, 1906-1971) - Satire of industry**, crayon and pencil on paper, inscribed 'To Corin from James Boswell after Tintoretto Ingres Delacroix Millais Lord Leighton Steinberg Picasso and other old pals not forgetting William Etty' lower right, 41.5 x 53cm **£100-150**

278 **§ Dame Laura Knight RA RWS (1877-1970) - Racecourse study**, pencil on paper, signed lower right, 24 x 33cm, with another work verso; Circus performer on horseback, pencil on paper, signed lower right **£400-600**

279 **Gordon Barker (b.1960) - Gone Skating**, acrylic on paper, signed lower right, titled verso, 24.5 x 24.5cm **£60-80**

280 **Gordon Barker (b.1960) - Relaxing Day**, acrylic on paper, signed lower right, titled verso, 25 x 25cm **£60-80**

281 **Gordon Barker (b.1960) - Figures playing in the snow with yellow house**, acrylic on paper, signed lower right, 29 x 39cm **£50-70**

282 **Gordon Barker (b.1960) - Evening Walk**, acrylic on paper, signed lower right, titled verso, 24.5 x 24.5cm **£60-80**

283 **Ruth Stage (b.1969) - Beach rocks**, tempera on board, unsigned, bearing gallery label verso, 30 x 30.5cm **£200-300**

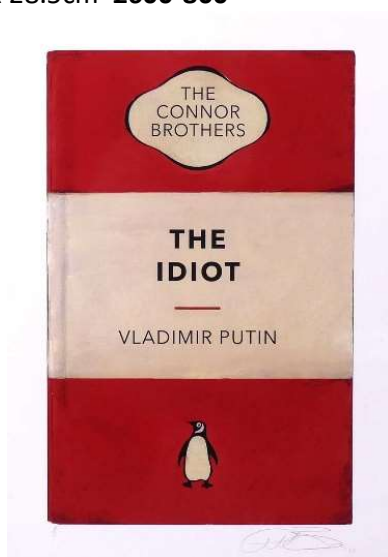
284 **West Country Prince after Banksy - Laugh Now But One Day We'll Be In Charge**, screenprint on paper, bearing stamp and numbered '72/500' verso, unframed, sheet 70 x 50cm **£120-180**

285 **West Country Prince after Banksy - Girl With Balloon**, screenprint on paper, stamped verso, unframed, sheet 70 x 50cm **£120-180**

286 **Banksy (b.1974) - Peckham Rock**, offset lithograph on wooden postcard, produced by the British Museum with the permission of Pest Control, 12 x 18cm **£200-300**

287 **Harland Miller (b.1964) - York So Good They Named It Once (2020)**, offset lithographic poster, 84 x 55cm **£100-200**

288 **§ Connor Brothers (b.1968) - The Idiot, Vladimir Putin**, giclée print in colours on wove paper, signed, dated '22 and inscribed 'AP' in pencil to the margin, sheet 41.5 x 28.5cm **£600-800**



289 **§ Connor Brothers (b.1968) - If You Haven't Got Anything Nice To Say Come Sit Next To Me**, giclée on wove paper, signed, dated '18 and numbered '16/150' in pencil to the margin, sheet 29 x 41cm **£500-700**

290 **Ben Eine (b.1970) - SCARY (2017)**, offset lithograph, signed in pen lower left, sheet 50 x 70cm, unframed **£100-150**

291 **Angela Burfoot (1934-2006) - Daisies in a jug**, oil on board, signed and dated '1975' lower left, 36.5 x 29cm **£80-120**

292 **Cyclops (b.1975) - Totem**, acrylic on panel, signed and dated '2009' verso, 90 x 17cm **£100-150**

293 **John Bratby RA (1928-1992) - Haver**, pastel and pencil on paper, signed, dated 11 Nov '18 and inscribed lower right, bearing gallery label verso, 17.5 x 24.5cm **£50-100**

294 **John Bratby RA (1928-1992) - Beaufort**, pastel and pencil on paper, signed lower left, inscribed lower right, 21 x 29cm **£50-100**

295 **Ronald Brooks Kitaj RA (American, 1932-2007) - Let Us Call It Arden and Live In It**, screenprint, signed and numbered '67/70' in pencil to the margin, visible sheet 73.5 x 48.5cm, together with Kitaj Prints: A Catalogue Raisonné, by Jennifer Ramkalawon, where another from the edition of 70 is catalogued, p. 233, No.39 (2) **£200-300**

296 **After Sir Stanley Spencer CBE RA (1891-1959) - Self-portrait**, lithograph, inscribed and numbered '55/75' in pencil to the margin, visible sheet 37.5 x 23.5cm **£200-300**

297 **Jeremy Barlow ROI (1945-2020) - North Norfolk street scene**, oil on board, signed lower left, 28 x 38cm, together with North Norfolk Landscapes, by Jeremy Barlow, inscribed 'Best wishes Jeremy', signed and numbered '1651/2000' to the title page (2) **£200-300**

298 **Colin See-Paynton (b.1946) - Covey of Partridges**, wood engraving, signed and numbered '12/75' in pencil to the margin, bearing gallery label verso, visible sheet 12 x 9cm **£40-60**

299 **William T. Rawlinson (1912-1993) - Bredon from Arden's Grafton, Warwickshire**, wood engraving, signed, dated '1978' and numbered '1/50' in pencil to the margin, visible sheet 34 x 33cm **£80-120**

300 **Frederick Hans Haagenzen (Norwegian 1877-1943)** - **City of New York at the Ice Barrier, Antarctic, Commander Byrd's Expedition, 1929**, etching, signed and numbered 1/75 in pencil to the margin, visible sheet 24.5 x 34cm **£80-120**

301 **Sonia Lawson RA (1934-2023)** - **The Plotters**, mixed media on paper, signed lower right, 58.5 x 41.5cm **£200-300**

302 **Geoffrey Lefever (British, b.1932)** - **White Roding**, watercolour and gouache on paper, signed and dated lower right, 56 x 77cm, together with two other works by the artist; **Provence**, watercolour and gouache on paper, signed lower right, unframed, 47 x 70.5cm; **Bellegarde**, Provence, watercolour and gouache on paper, signed lower right, unframed, 41 x 55cm (3) **£150-250**

303 **Henry Moore OM CH FBA (1898-1986)** - **Sculptural Objects**, lithograph in colours, signed and dated '49 in the stone, printed by W.S. Cowell Ltd, published by School Prints Ltd, visible sheet 38.5 x 76cm **£200-400**

304 **Emmanuel Taiwo Jegede (Nigerian, b.1943)** - **Untitled (1970)**, mixed media on paper, signed and dated lower right, 36.5 x 55cm **£100-200**

305 **Emmanuel Taiwo Jegede (Nigerian b.1943)** - **Reclining figure**, oil on board, 56.5 x 85cm **£200-400**

306 **Emmanuel Taiwo Jegede (Nigerian, b.1943)** - **Secret Of The Heads**, linocut, signed, dated '95 and numbered '1/10' in pencil to the margin, visible sheet 42.5 x 30.5cm **£50-80**

307 **Emmanuel Taiwo Jegede (Nigerian, b.1943)** - **The Gift (1994)**, acrylic on card, signed and dated lower right, 54.5 x 81.5cm **£300-500**

308 **Emmanuel Taiwo Jegede (Nigerian, b.1943)** - **Orin Òke (1972)**, pen and ink on paper, signed and dated lower left, 18 x 22cm, together with a portrait of the artist (2) **£80-120**

309 **British School circa 1960's** - **Bulldog**, oil on canvas, monogrammed lower right, 39.5 x 50cm **£100-150**

310 **Contemporary School** - **Mediterranean landscape**, oil on board, 63 x 79.5cm **£80-120**

311 **Saül Steinberg (American, 1914-1999)** - **Moore**, pen on paper, signed and dated '1964' lower right, bearing 'Betty Parsons Gallery' and 'The New Yorker Magazine' labels verso, 37 x 58.5cm **£2,000-3,000**



312 **20th century School** - **Reclining female**, charcoal on paper, indistinctly signed to mount, 37.5 x 30cm **£50-70**

313 **20th century School** - **figural study**, ink on paper, 20 x 27cm **£40-60**

314 **After Egon Schiele (Austrian, 1890-1918)** - **Self portrait**, lithograph, signed and dated '1913' in the plate, visible sheet 26.5 x 17cm, together with three others; portrait of Gerti Schiele, portrait of a girl, two little girls (4) *Note: the present works are later copies of prints from Egon Schiele's Handzeichnungen, smaller in size and appear un-numbered* **£100-200**

315 **Paul Hogarth RA (1917-2001)** - **Satirical illustration**, ink on paper, signed lower right, unframed, 34 x 43cm **£100-150**

316 **Graham Metson (b.1934)** - **Abstract composition**, acrylic on canvas, 100 x 123.5cm **£80-120**

317 **§ Athier Mousawi (Iraq, b.1982)** - **Untitled**, abstract bright coloured composition, acrylic on canvas, signed lower left, 180 x 240cm **£3,000-5,000**



318 **After Andy Warhol - Mickey Mouse**, offset lithograph, numbered '1702/2400' in pencil, visible sheet 59 x 59cm **£50-70**

319 **After Andy Warhol - Skull**, offset lithograph, numbered '945/2400' in pencil, visible sheet 59 x 59cm **£50-70**

320 **Ronald Ronaldson (1919-2015) - Still life with lemon**, oil on canvas, signed lower left, 44 x 59cm **£150-250**

321 **Sylvia Bergin Rowley (1904-1999) - Littlehampton Boat Yard, Houseboats**, oil on board, 42 x 57.5cm **£80-120**

322 **Eduardo Baroni (Italian Contemporary) - L'Azzuro Sapiente**, oil on canvas, signed lower left and inscribed verso, 80 x 70cm **£80-120**

323 **Philip Naviasky (1894-1983) - Portrait of an old lady**, oil on board, signed upper right, 60 x 49.5cm **£100-150**

324 **Jane Bennett (b.1960) - Still life with striped mug**, oil on board, signed lower left, 29.5 x 23.5cm, together with another work by the same hand; Still life of cherries, oil on board, signed lower left, 34 x 23cm (2) **£40-60**

325 **Roy Henry Vickers (Canadian, b.1946) - Blue Moon**, screenprint in colours, signed and numbered '72/150' in pencil, visible sheet 37.5 x 55cm **£70-100**

326 **Matthew Alexander (b.1953) - Nude woman by a window**, oil on canvas board, signed lower left, 17 x 12cm, together with another work by the same hand, Lacey Green Windmill, Bucks, watercolour on paper, signed in pencil lower right, 13 x 18cm (2) **£70-100**

327 **Matthew Alexander (b.1953) - View from Thanet Way**, oil on canvas board, signed and dated '1981' lower right, 17 x 38cm **£80-120**

328 **Matthew Alexander (b.1953) - Barns in Bucks**, oil on canvas board, signed and dated '83 lower right, 11 x 29.5cm **£80-120**

329 **Henri-Georges Meunier (Belgian, 1873-1922) - Canal à Venise**, etching and aquatint, signed in the plate, signed and inscribed 'tire a 30 eps. N.23' in pencil to the margin, visible sheet 24.5 x 14cm **£50-80**

330 **§ Margaret Thomas (1916-2016) - Summer Bunch**, oil on board, signed with monogram lower left, 39 x 29cm **£300-500**

331 **Ann Armitage (b.1959) - Porthgwarra**, oil on board, signed with initials lower right, 42 x 43cm **£200-300**

332 **Robin Warnes (b.1952) - Snowbound**, mixed media on paper, signed and dated '05 lower left, 32.5 x 38cm **£40-60**

333 **Dionne Sievewright (b.1973) - Little White Daisies**, mixed media on paper, signed lower right, titled verso, 34 x 34cm **£100-150**

334 **Jane Bennett (b.1960) - Still life of plums**, oil on board, signed lower left, 29.5 x 39.5cm **£40-60**

335 **Phil Greenwood (b.1943) - Spring Grass**, etching and aquatint on wove paper, signed, dated '75 and numbered '68/75' in pencil to the margin, visible sheet 55 x 60cm **£50-80**

336 **Valerie Thornton (1931-1991) - Sos del Rey Católico**, etching and aquatint, signed, dated '81 and numbered '43/60' in pencil to the margin, visible sheet, 35.5 x 52cm **£80-120**

337 **Mark Clark (b.1959) - Standing female nude**, etching, signed, dated '99 and numbered '83/120' in pencil to the margin, sheet 38 x 29cm **£40-60**

338 **Stuart Walton (b.1934) - Untitled**, oil on board, signed and dated '83 lower right, 60 x 39.5cm, together with another work by the same hand; Untitled, oil on board, signed and dated '83 lower right, 60 x 39.5cm (2) **£150-250**

339 **Christopher Pemberton (1923-2010) - Portrait of a lady**, mixed media on paper, signed and dated '1998' lower right, 40.5 x 57.5, together with another work attributed to Christopher Pemberton; portrait of a gentleman, pastel on paper, 49.5 x 39.5cm (2) **£100-150**

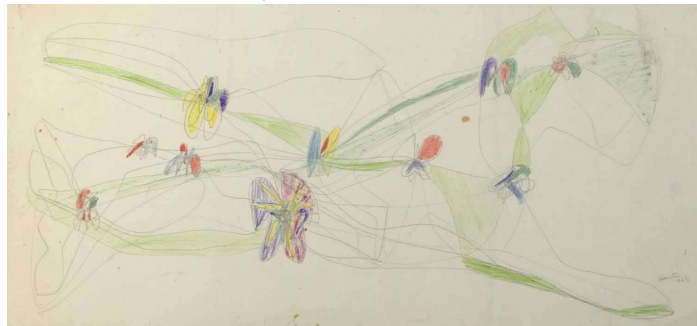
340 **Brenda Hartill (b.1943) - Winter Variations IV**, etching and aquatint on wove paper, signed, dated '86 and numbered '190/200' in pencil to the margin, visible sheet 70 x 47cm **£80-120**

341 **Mary E. Oddie (early 20th century) - Prunus blossom**, oil on canvas, signed lower left, 45 x 36cm **£50-80**

342 **Manner of William Scott - Still life of a jug**, oil on panel, bearing paper label inscribed 'W. Scott 80' verso, 30 x 37cm **£200-400**

343 **A 1980s abstract screenprint tiled Man-Eagle**, printed in bold block colours, indistinctly signed, dated '89, titled and numbered 1/8 screenprint in pencil to the lower margin, full sheet 86 x 59cm **£40-60**

344 **§ Stanley William Hayter (1901-1988) - Untitled**, coloured crayon and pencil on paper, signed and dated '1943' lower right, 26 x 54cm *Provenance: Bloomsbury Auctions, Stanley William Hayter: Painter Printmaker, 26th November 2014, lot 33* **£400-600**



345 **Anita Klein (Australian, b.1960) and Mychael Barratt (British, b.1961) - Watching The Sound of Music**, etching on wove paper, signed, dated '04 and numbered '1/25' in pencil to the margin, sheet 53 x 62cm **£150-250**

346 **§ Dame Barbara Hepworth (1903-1975) - Sun and Marble (1971)**, lithograph in colours, signed in pencil lower right, inscribed 'studio proof' lower left, visible sheet 79 x 59cm **£1,000-1,500**

347 **§ Dame Barbara Hepworth (1903-1975) - Genesis (1969)**, lithograph in colours, signed in pencil lower right, inscribed 'artists proof' lower left, 81.5 x 59cm **£700-1,000**

348 **Alan Davie CBE RA HRSW (1920-2014) - Italian Image**, lithograph in colours, numbered '665' in pencil lower right, visible sheet 49 x 65cm **£150-250**

349 **§ John Piper CH (1903-1992) - Foliate Head (Levinson 256)**, lithograph in colours on wove paper, 1976, signed in pencil lower right, visible sheet 56.5 x 37.5cm **£300-500**

350 **Mary Fedden RA (1915-2012) - Etching Table (1972)**, lithograph in colours, printer's proof, signed in pencil lower right, visible sheet 48.5 x 64cm **£100-150**

351 **Mary Fedden RA (1915-2012) - Etching Table (1972)**, lithograph in colours, printer's proof, signed in pencil lower right, unframed, sheet 57 x 77cm **£100-150**

352 **Mary Fedden RA (1915-2012) - Etching Table (1972)**, lithograph in colours, printer's proof, signed in pencil lower right, unframed, sheet 57 x 77.5cm **£100-150**

353 **Allen Jones RA (b.1937) - Leg Splash**, offset lithograph in colours, 1970, printer's proof, visible sheet 74 x 51.5cm **£50-80**

354 **Allen Jones RA (b.1937) - Leg Splash**, offset lithograph in colours, printer's proof, 1970, unframed, sheet 65.5 x 50cm **£50-80**

355 **Peter Baer (German-British, 1924-1996) - View of the Sea (1975)**, etching, signed lower right, numbered '5/75' lower left, visible sheet 65.5 x 50cm **£50-80**

356 **Ceri Richards (1903-1971) - Elegiac Sonnet I**, lithograph in colours, printer's proof, visible sheet 41.5 x 34.5cm **£50-70**

357 **Eileen Cooper RA (b.1953) - Shadow**, linocut, 2011, signed and numbered '18/40' in pencil to the margin, bearing 'RA EDITIONS' label verso, visible sheet 64 x 49.5cm **£100-150**

358 **Robert J. Young (Canadian, b.1938) - Sewing Machine (1968)**, etching, signed and numbered '1/4' in pencil to the margin, visible sheet 46 x 63cm **£50-80**

359 **Rosslyn Ruiz (b.1935) - Abstract form in relief**, mixed media on board, signed lower left, 75 x 120cm **£100-200**

360 **British School (20th century) - Bottles and mortar**, oil on canvas, indistinctly signed and dated lower right, 46 x 60cm **£80-120**

361 **Biddy Bunzl (b.1952) - Lush III**, acrylic on canvas, signed and dated '2001' verso, 102 x 92.5cm **£80-120**

362 **Tom Phillips CBE RA (1937-2022) - Metamorphoses**, etching on wove paper, signed and numbered '56/100' in pencil to the margin, sheet 30.5 x 25.5cm, with original accompanying poems by Roy Fisher and original cover, published by Tetrad Press, 1970 **£40-60**

363 **Ian Tyson (1933-2021) - Diversions**, six screenprints, 1967, artist's proof, each signed and inscribed 'A/P' in pencil, each 38 x 38cm, with original cover, published by The London Arts Group **£50-80**

364 **Shmuel Shapiro (American, 1924-1983) - Work 1955-1966**, list of exhibitions and collections of Shapiro's work and essay (translated into English) by Jürgen Thimme, with the four original accompanying lioncuts; In Memory of the Venus of Willendorf, Blushing Virgin, The Insect Man, Nude, 1966, each signed, dated and numbered '135/150' in pencil, printed by C.F. Müller **£50-80**

365 **Stanley Jones MBE RE (1933-2023) - Sarn**, lithograph in colours, 1978, unframed, sheet 76 x 51cm, together with a lithographic poster 'Lithographs from the Curwen Studio a retrospective of fifteen years printmaking and print market, 14 December 1973 to 13 January 1974', signed in the plate (2) **£100-200**

366 **A set of four foilblock prints**, various artists to include; Jean-Michel Folon, Dieter Roth, Norman Ives and Armin Hofmann, each signed in the plate, from the edition of unknown size, printed by Harlands of Hull, published by ICI, unframed, each sheet 24.7 x 24.7cm **£400-600**

367 **A collection of Curwen Press printed paper**, to include examples by Paul Nash and Edward Bawden **£50-100**

368 **A collection of 1980's protest poster prints**, to include pro miners and anti apartheid examples (13) **£40-60**

369 **George Buday (Hungarian-British, 1907-1990) - a collection of wood engravings and cards**, to include Thornbury Glen, signed and numbered '6/12' in pencil, 20 x 14.5cm, inscribed verso, various hand written cards featuring the artist's work and Victorian scraps, together with The History of the Christmas Card, inscribed 'for Ella & Harry & Matthew & Tom with much love from this affectionate friend, "The Author" Dec 4. 1954' *Provenance: Given to the vendors parents by George Buday* **£100-200**

370 **Peter Schmidt (1931-1980) - Flowing in the Right Direction (1971)**, lithograph in colours on wove paper, artist's proof, signed in pencil lower right, unframed, sheet 65.5 x 50cm **£80-120**

371 **John Piper CH (1903-1992) - Swansea Chapel (Levinson 175)**, lithograph in colours, 1966, printer's proof, printed by Curwen Studio, published by Marlborough Fine Art, unframed, sheet 81.5 x 59cm, together with Crug Glas, lithograph, 1966, printer's proof, unframed, sheet 59.5 x 81.5cm (2) **£200-400**

372 **Ceri Richards (1903-1971) - The Story Lost in the Snow**, lithograph in colours, 1971, printed at Curwen Studios, unframed, sheet 52 x 67cm, together with two others; Vaucluse, Elegy for Vernon Watkins, printer's proofs (3) **£50-100**

373 **Reg Butler (1913-1981) - Tower (1968)**, lithograph, printer's proof, unframed, sheet 75 x 53.5cm, together with another (2) **£80-120**

374 **Bernard Leach CH (1887-1979) - Black Jar (1974)**, lithograph in colours, signed in pencil lower right, unframed, sheet 77.5 x 56.5cm **£100-150**

375 **Bernard Leach CH (1887-1979) - Deer Plate (1973-74)**, lithograph in colours, signed in pencil lower right, unframed, sheet 77.5 x 56.5cm **£100-150**

376 **Bernard Leach CH (1887-1979) - Fish Vase (1974)**, lithograph in colours, signed in pencil lower right, unframed sheet 77.5 x 57cm **£100-150**

377 **Bernard Leach CH (1887-1979) - Tree Jar (1974)**, lithograph in colours, signed in pencil lower right, unframed, sheet 77.5 x 57cm **£100-150**

378 **Bernard Leach CH (1887-1979) - Bird Dish (1973-74)**, lithograph in colours, unframed, sheet 77 x 56.5cm **£100-150**

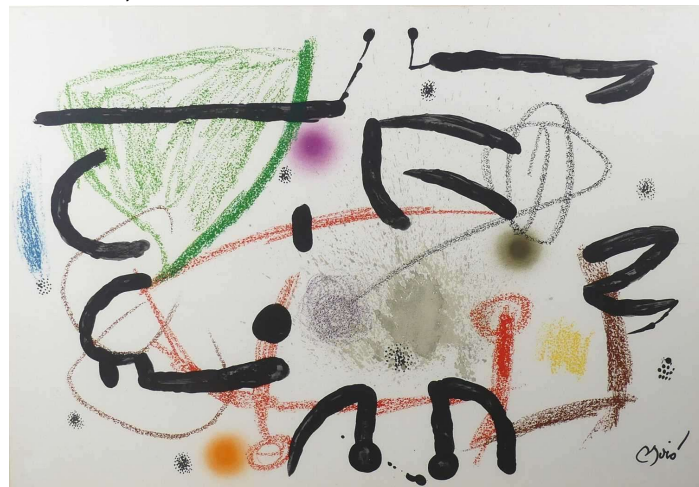
379 **Bernard Leach CH (1887-1979) - Fish Vase (1974)**, lithograph in colours, unframed, sheet 77.5 x 57cm **£100-150**

380 **Bernard Leach CH (1887-1979) - Lion Tile (1974)**, lithograph in colours, signed in pencil lower right, unframed, sheet 57 x 77.5cm **£100-150**

381 **John Kiki (b.1943) - Dark Rider**, etching, signed and numbered '22/50' in pencil to the margin, visible sheet 56 x 45.5cm **£120-180**

382 **Jamie Andrews (b.1963) - Loop the Loop**, acrylic and plastic on card, signed with initials and dated '87 lower left, 36 x 9cm **£100-150**

383 **Joan Miro (Spanish, 1893-1983) - Maravillas con Variaciones Acrosticas 15**, lithograph in colours on wove paper, 1975, from the edition of 1500, signed in the stone, sheet 49.5 x 71.5cm **£200-300**



384 **Salvador Dalí (Spanish 1904-1989) - Royal Insect**, lithograph in colours on Arches paper, 1974, signed and numbered 21/250 in pencil, visible sheet 42.5 x 58.5cm **£400-600**

385 **Salvador Dalí (Spanish, 1904-1989) - Le Girafe en Feu**, lithograph in colours on Arches paper, signed and

numbered '111/250' in pencil, visible sheet 46 x 48.5cm **£400-600**

386 **Robert Freeman (1936-2019) - Fans on Miami Beach waiting for The Beatles**, silver gelatin print, signed and numbered '1/25' in pencil to the mount, image size 21 x 30cm **£100-200**

387 **Giuseppe Banchieri (Italian, 1927-1994) - Still life of flowers on a shelf**, oil on panel, signed and dated '89 upper right, 20 x 15cm **£100-200**

388 **George Downs (1901-1983) - Still life with vase and book**, oil on canvas, signed across book, 51 x 60.5cm **£300-400**

389 **Sergio Scatizzi (Italian, 1918-2009) - Flowers in a vase**, oil on card, signed lower centre, 15.5 x 10.5cm **£100-200**

390 **Sergio Scatizzi (Italian, 1918-2009) - Landscape**, oil on card, signed lower left, 16 x 10.5cm **£150-250**

391 **Sergio Scatizzi (Italian, 1918-2009) - Landscape**, oil on panel, signed lower right, 24 x 12.5cm **£200-300**

392 **Alberto Giacometti (Swiss, 1901-1966) - Bust of a Nude, Derriere Le Miroir No. 127**, lithograph, 1961, sheet 38 x 27.5cm **£60-80**

393 **Alberto Giacometti (Swiss 1901-1966) - Profile of seated woman, Derriere Le Miroir No. 127**, lithograph, 1961, sheet 38 x 27.5cm **£60-80**

394 **Albert Houthuesen (Dutch-British, 1903-1979) - Pierrot in red**, lithograph in colours, printer's proof, unframed, sheet 77 x 57cm **£50-80**

395 **Margaret Glass (b.1950) - Barges, Pinmill**, pastel on paper, signed and dated '1978' lower left, 54.5 x 36.5cm **£150-250**

396 **Gordon King (1939-2022) - Spring Sunshine**, watercolour on paper, signed lower right, 49 x 70.5cm **£100-150**

397 **Marion Gill (1879-1959) - Edinburgh in Spring**, acrylic on paper, signed lower left, 39.5 x 48cm **£100-150**

398 **Emily Little (b.1962) - Interior**, mixed media, signed lower right, 29 x 20.5cm **£50-70**

399 **Ann Wilkinson (1934-2022) - Irises**, pastel on paper, signed lower left, 71.5 x 50.5cm **£100-150**

400 **After A.R. Penck - Ten x Den x Zen 1**, 1983 Staatliche Museen Preussischer Kulturbesitz, National Galerie Berlin exhibition, offset lithographic poster, published by Achenbach Art Edition Düsseldorf 1991, 68.5 x 88cm **£50-80**

401 **Audrey Muriel Weber (1891-1982) - Coneyhurst Hill, Surrey**, watercolour on card, signed lower right, 17.5 x 26cm *Provenance: Commissioned by The Southern Railway Company for Hills Of The South, S.P.B. Mais, published by Southern Railway Company, London, 1939* **£100-200**

402 **John Brunsdon (1933-2014) - Suffolk Scene**, etching and aquatint, signed and numbered '104/125' in pencil to the margin, visible sheet 49.5 x 69.5cm **£50-80**

403 **Trevor Chamberlain (b.1933) - Aldeburgh**, oil on canvas, signed and dated lower left, 39 x 49.5cm **£150-250**

404 **Richard Bawden (1936-2024) - Aldeburgh Cat**, ink on wove paper, signed, titled and dated '28th May 2013' verso, 20 x 14.5cm **£80-120**

405 **Richard Bawden (1936-2024) - Midnight Visitor**, etching with aquatint, signed and numbered '11/75' in pencil to the margin, visible sheet 41.5 x 57cm **£200-300**



406 **Richard Bawden (1936-2024) - Blue Cat**, linocut, signed and numbered '12/85' in pencil to the margin, 38.5 x 43cm **£150-250**

407 **Heather Ross (b.1983) - Rediscovering Desire at Santo Felicitia**, mixed media on paper, bearing 'Thackeray Gallery' label verso, 52 x 33cm **£40-60**

408 **John Doubleday (b.1947) - Joyce Von Vijn: Décolleté**, mixed media on paper, signed and dated '70 upper right, titled upper left, 52.5 x 37cm **£100-150**

409 **John Doubleday (b.1947) - Standing Female Nude**, mixed media on paper, signed and dated '69 lower right, 37 x 14cm **£80-120**

410 **Simon Blackwood (b.1948) - Heron**, oil on canvas, signed lower left, 45 x 56.5cm **£80-120**

411 **§ Archibald Russell Watson Allan (1878-1959) - The Plough team**, oil on canvas, signed lower right, 57 x 109cm **£300-500**

412 **Max Ninon (Italian, 1896-1982) - Le Galant**, pochoir stencil on paper, signed and dated '1925' lower left, visible sheet dimensions 31 x 37cm **£100-150**

413 **Manner of L.S. Lowry - Streetlamp**, graphite on paper, indistinctly titled and bears signature upper left, 21 x 28cm **£400-600**

FURNITURE

420 **An Arts & Crafts wall mirror in the manner of Liberty & Co**, circa 1900, having a planished copper frame, repousse decorated with flowers with blue enamel detail, 43.5 x 84cm **£200-300**

421 **An Arts & Crafts wall mirror**, circa 1900, of oval shape, having a planished copper framed with applied decoration, 59.5 x 85cm **£50-80**

422 **A pair of Arts & Crafts floral embossed brass mirrored wall sconces**, each of circular form with bevelled mirror insets, floral stylised border detail, with twin removable sconces branch arms, dia.23.6cm **£60-80**

423 **Attributed to Ernest Gimson (British, 1864-1919) - an Arts & Crafts ebonised and bobbin turned oak, elm**

and ash rushseat rocking elbow chair, w.57cm **£120-180**

424 **William Morris (1834-1896) - an Arts & Crafts ebonised 'Sussex' chair**, having spindle turned back and with further confirming arm rests to rushseat and turned supports, w.55cm **£200-300**



425 **Morris Marshall Faulkner & Co - an Arts & Crafts ebonised beech 'Rossetti' rushseat elbow chair**, with spindle turned back, raised on ring turned supports united by stretchers, w.51cm **£200-300**



426 **An Arts & Crafts oak student's bureau bookcase**, having twin bowed glazed upper doors, over fall-front to single long drawer and open lower shelving, within balustrade columns, h.165.5cm, w.81cm, d.38cm **£80-120**

427 **An impressive possibly Glasgow School Art Nouveau mahogany floral stylised and further mother of pearl inlaid double door lead glazed display cabinet**, having an arched removable ledgeback over bevelled mirrored inset raised superstructure, the twin doors enclosing floral silk lined fabric interior with twin serpentine front shelves, over platform undertier to stepped feet, max h.211cm, w.142cm, d.40.5cm **£400-600**



428 **An Art Deco tubular chromed metal hallstand**, having upper railed luggage rack, rectangular bevelled inset mirror and stylised stepped hooks, over six-division lower stickstand, h.186cm, w.65.5cm, d.25cm **£50-100**

429 An Art Deco chromed metal and butterscotch bakelite hanging four-branch ceiling light, each of flamed finial form, with frosted two-tone moulded glass shades and conforming central column, approx drop 60cm **£50-80**

430 An Art Deco figured walnut squarefront chest of two short over three long graduated drawers, with floral pierced cast metal and bakelite backed pull handles, raised on stepped feet, h.96cm, w.108.5cm, d.47cm **£120-180**

431 A mid-20th century Clarks shoe shop child's tub chair, with red vinyl studded upholstery, curved plywood back, labelled to reverse, w.55cm **£100-150**

432 A circa 1950s red painted steel freestanding cigarette vending machine, having chromed metal riveted detail, with four upper coin-operated slots over glazed door titled 'Cigarettes', with four conforming dispensaries, over lower door inset with text 'This is the library for the latest books' label for the 'National Automatic Machines Ltd London SW20', wired for electricity, h.179.5cm, w.60.5cm, d.24.5cm **£200-400**

433 A 1960s McIntosh teak dining suite, comprising; D-end dining table with pull-out action and single fold-out leaf, raised on plain turned supports, extended length 167.5cm, enclosed length 122cm, d.122cm, h.74cm, together with a set of four conforming dining chairs, having cloth fabric barback and fixed pad seat upholstery, raised on turned supports, with label to underside and numbered '9533', w.49.5cm (5) **£200-300**



434 A 1960s McIntosh teak 'Dunvegan' highboard, the upper section with open fixed shelving and single fall-front compartment, over twin frieze drawers (one fitted for cutlery), and a long lower fall-front cupboard compartment, raised on turned supports, label to inside of upper right hand drawer, h.158cm, w.111.5cm, d.45cm **£80-120**

435 A 1960s bamboo and frosted glass inset topped circular low occasional table, raised on black painted steel rodded supports, h.48cm, dia.54.5cm **£40-60**

436 A 1960s Danish teak kneehole writing desk, the single central drawer flanked by raised pedestals, each with three short drawers, curved integral handles, and raised on square tapering supports, h.73cm, w.135cm, d.65cm **£100-150**

437 A 1970s Danish rosewood wall unit, the upper section with twin glazed doors over open lower shelf, the base fitted with four graduated long drawers with elongated angular handles, h.186cm, w.100cm, d.44cm **£100-150**

438 A 1970s Danish rosewood wall unit, the upper section with twin open single shelved compartments, over twin drawers and single fall-front cupboard, to twin cupboard door base, h.186cm, w.100cm, d.44cm **£100-150**

439 Magnus Olesen for Durup - a 1960s Danish teak low square coffee table, having removable surface and raised on plain turned supports, with paper label to underside, h.46cm, w.68cm, d.68cm **£50-70**

440 Werner Schou for Coronell Elektro - a pair of 1970s Danish brushed copper and black painted pendant ceiling lights, each with raised faceted inset luminous markers, dia.42cm; together with two brushed copper pendant ceiling lights, each Danish 1970s, dia.38cm (4) **£50-70**

441 A 1960s Danish teak framed five-light electrolier, having circular tapering ceiling rose, with white glass pendant drop shades **£40-60**

442 A 1960s Danish teak long sideboard, having three drawers and twin sliding cupboard doors, the doors with pinched metal handles, the drawers with flush

metal rodded drop handles, raised on tapering end supports, h.73cm, w.202.5cm, d.43.5cm **£150-200**

443 Kurt Olsen for Slagelse Møbelværk - a set of four 1950s model 223 teak framed tub elbow chairs, each vinyl upholstered, raised on turned slightly tapering supports united by stretchers, w.63cm **£200-300**

444 A 1970s Danish black vinyl and leather upholstered two-seater sofa, having twin buttoned back and squab cushions, raised on spun aluminium cylindrical squat supports, w.142cm **£120-180**

445 A 1960s Danish formed laminate framed and tan leather upholstered swivel open armchair, raised on rosewood effect metal five-spoke base, w.67cm **£50-70**

446 H.W. Klein for Bramin - a 1960s Danish chocolate brown leather upholstered swivel armchair, raised on rosewood effect five-spoke metal base, w.84cm **£100-150**

447 A contemporary Danish style blond ash framed open armchair, having a lime green fabric detachable pad back and fixed pad seat, with widened and further tapering arm rests, w.76.5cm **£80-120**

448 A circa 1960 Swedish DUX corduroy green fabric buttonback upholstered two-seater sofa, raised on stained beech end supports, with integral arm rests, with sprung seat and of bolted construction, w.135cm **£50-80**

449 A 1960s Norweigan possibly Ekornes 'Stressless' tubular chrome framed and rouge leather upholstered swivel armchair, having locking reclining mechanism, raised on circular base, w.75cm **£80-120**

450 A Norwegian beech framed tub armchair by Skalma, with cognac brown leather upholstered pad back and fixed seat, slatback detail, with stitched label to leather, w.65.5cm **£60-90**

451 A 1960s Scandinavian formed laminate cantilever framed three-piece suite, comprising a three-seater sofa, w.187cm, and a matching pair of open armchairs, w.71cm, each with burgundy buttoned leather upholstered squab back and seat cushions, with further padded arm rests, of Allen Key construction **£150-250**

452 A 1960s G-Plan teak and tile-top inset rectangular coffee table, raised on a flattened and slightly curved end supports, label to underside, h.44.5cm, length 123cm, d.52cm **£40-60**

453 A 1960s G-Plan teak 'Astro' circular coffee table, having a clear glass inset surface, raised on curved X-frame supports, h.46cm, dia.84cm **£80-120**

454 A set of six 1960s teak and black vinyl pad back and seat dining chairs, each raised on slightly tapering curved supports, with paper labels to underside, w.50cm **£200-300**

455 A 1960s soft mustard leather upholstered swivel open armchair, possibly by De Sede, with fixed padded arm rests, cushioned back and seat, raised on five-spoke flattened aluminium base of Allen Key construction, w.90cm **£120-180**

456 A 1970s probably German soft mustard yellow leather upholstered three-seater sofa, having exposed stitched detail, three removable squab cushions, raised on squat circular chrome feet, w.230cm **£200-300**

457 A 1960s teak long coffee table, having rounded corners, cane inset undertier and on tapering curved supports, h.47cm, length 137cm, d.45.5cm **£60-90**

458 A 1960s teak long sideboard, having five graduated drawers flanked by a single fall-front compartment and a pair of cupboard doors, each with tuned tapering button handles, raised on further turned and slightly tapering supports, h.72cm, w.223cm, d.45.5cm **£120-180**

459 A 1960s teak long sideboard, having three slanted central drawers, the upper drawer compartmentalized, flanked by single fall-front door and a single conventional cupboard door, raised on slightly supports, h.70.5cm, w.198cm, d.45.5cm **£100-150**

460 Meredew Furniture - a 1960s teak narrow chest of seven long drawers, the upper three drawers of narrow profile, the lower four drawers of deeper profile, with turned button handles, raised on square slightly tapering and kicked supports, h.119.5cm, w.61cm, d.45.5cm **£80-120**

461 **Merrow Associates - a 1960s chrome, rosewood and glass inset three-tier tea trolley**, raised on roller castors, of Allen key construction, h.64cm, w.73cm, d.46cm (*library image*) **£250-350**



462 **A pair of 1960s white painted fibreglass shell swivel lounge chairs**, each striped fabric upholstered, raised on tulip circular bases, each w.105cm; together with a matching swivel footstool, on chrome four-spoke base to wheeled castors, h.44cm, w.57cm, d.47cm (3) **£100-200**

463 **A contemporary blond ash framed and soft tan vinyl upholstered two-seater sofa**, after the 'Z' design by Poul Jensen, the slightly angular tapering arm rests on further conforming tapering supports, w.132cm **£120-180**

464 **Janine Abraham (1929-2005) - a bamboo, rattan and blond oak inset circular occasional table**, with twin carry handles, on splayed supports, h.50cm, d.69cm **£80-120**

465 **A contemporary joined chestnut topped refectory dining table**, having dark hardwood bowtie inlays, raised on black painted fibreglass block end pedestal supports, h.72.5cm, length 201.5cm, d.99cm **£500-700**

466 **A contemporary 'Starbay' campaign style walnut, leather and brass mounted table cube chest**, having upper slide over five long drawers, with sunken brass handles, leather applied end carry handles, oval label missing to top, 50.5 x 50.5 x 50.5cm **£120-180**

467 **A contemporary chromed metal five-branch floor light**, having clear globe glass shades, raised on plain column to a circular foot, h.176.5cm **£50-70**

468 **In the style of Harvey Guzzini - a chrome standard lamp**, with white perspex domed shade, h.145cm **£80-120**

469 **A contemporary Italian five-branch gilt brass floor light**, the graduated branch arms with domed shades, raised on plain cylindrical column to grey variegated marble circular base, max h.200cm **£120-180**

470 **Two contemporary Murano heavy moulded glass wall lights**, each of curved form, with frosted and silvered detail, each approx w.33cm; together with a contemporary chromed metal wall light, possibly by Habitat, with lower glass hanging detail, w.42.5cm (3) **£50-100**



471 **Jo Hammerborg for Fog & Morup - a 1960s Danish brushed aluminium 'Orient' pendant ceiling light**, together with two further Danish 1960/70s ceiling lights, the largest dia.38cm (3) **£40-60**

472 **Jean Carlo Prietti (Italian, b.1940) - a pair of 'Plona' aluminium framed and tan leather upholstered inset portable chairs**, each of folding action, max w.68.5cm **£100-150**

473 **A contemporary cream fleece upholstered three-seater 'Banana' sofa**, raised on blond wood block low supports, w.190cm **£120-180**



474 **A contemporary green suede fabric upholstered 'Banana' sofa**, raised on blond wood curved block supports, w.190cm **£120-180**

475 **Ingrid Starling - a deep pile woollen 'Blast Furnace' rug**, having flatweave ends, 153 x 98cm **£40-60**

476 **A pair of contemporary gilt brass floor lights**, each of twin rodde circular form, raised on integral flattened bases, h.123cm (excluding fittings) **£60-90**

477 **A set of eight large opaline white glass ceiling shades**, each of cylindrical form with lower stepped detail, h.28cm, dia.35cm **£200-400**



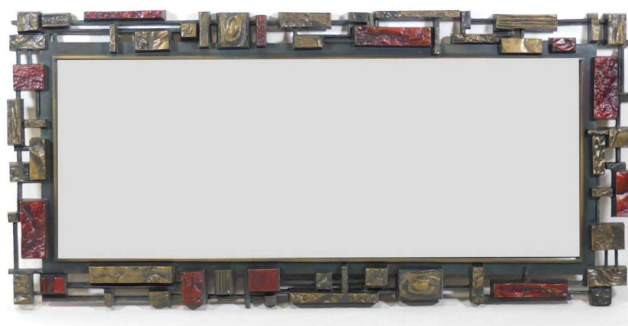
478 **In the style of Poul Henningsen - a 1970s Danish blue and cream painted aluminium small pendant light**, of gently dished form, dia.22cm **£30-40**

479 **Claus Bonderup and Torsten Thorup for Fog & Morup - three 'Semi-Pendant' painted aluminium ceiling lights**, in white, cream, each dia.49cm, and red, dia.39.5cm; together with a Holmegaard white glass pendant ceiling light of notched trumpet form, dia.37cm (4) **£50-80**

480 **A set of five 1960s Ercol model 391 blond elm and beech stickback kitchen chairs**, raised on turned slightly tapering supports united by upper stretchers, w.40cm **£200-300**

481 **A set of three 1960s Ercol blond elm and beech 'Quaker' chairs**, each with turned spindle backs and on conforming turned supports, w.42.5cm **£60-90**

482 **A Syroco brualist wall mirror**, of moulded construction, painted in metallic tones, marked in the mould 'COPYRIGHT MCMLXX SYROCO MADE IN USA 2024', 107 x 50cm *Note: The stated number '2024' to reverse is a design number rather than the date of manufacture* **£100-150**



483 **A vintage tennis umpire's chair by En Tout Cas**, green painted wood, of typical hinged A-frame construction, with central slatted hinged support and further upper hinged table surface. with applied foot treads, h.196cm, d.60cm, max w.151cm **£400-600**



484 **A contemporary Stressless formed laminate and grey leather upholstered reclining swivel armchair**, w.79cm; together with a matching footstool, w.55cm (2) **£200-300**

485 **Charles & Ray Eames for Vitra - an EA108 aluminium swivel desk chair**, with black mesh one-piece seat, raised on four-spoke base, traces of paper label to underside, w.58cm **£100-150**

486 **Charles & Ray Eames for Vitra - an EA208 soft pad desk chair**, spun aluminium framed and tan leather padded upholstered, with swivel action and raised on four-spoke base, with integral foot glides, cast marks and paper label verso, w.57.5cm **£400-600**



487 **In the style of Hans Wegner - a contemporary dark elm and woven rush seat tub elbow chair**, raised on turned supports, w.63.5cm **£50-70**

488 **In the style of Hans Wegner - a set of four contemporary curved plyback and blond wood dining chairs**, each having tan leather fixed pad seats, on turned plain supports, w.55cm **£70-100**

489 **In the style of Hans Wegner - a contemporary cream fleece fabric buttonback upholstered winged armchair**, with fixed squab cushion, raised on turned mid-elm stained supports, w.69cm **£100-150**



490 **Saburo Inui (Japan 1911-1991) for Tendo Mokko - a 'Zataku' coffee table**, formica veneered and layered wood, circa 1960, raised on curved supports, Japanese retailer's label to underside, h.34cm, length 106cm, d.75.5cm **£300-500**



491 **Tada Mokko - a large Japanese layered beech coffee table**, with Keyaki veneer, circa 1990s, raised on curved supports, h.34cm, length 150cm, d.90cm **£500-700**



End of sale

Entries Always Invited for Future Auctions

Home & Interiors

These three weekly sales are the largest of their kind in East Anglia. The majority of lots come from house clearances including deceased estates, and range from modest items worth a few pounds to good quality reproduction furniture, Georgian and later antiques selling for up to £1000.

Contact: Shaun Crichton MA scrichton@lsk.co.uk

Fine Art & Antiques, Classic Cars & Motorcycles

Quarterly Fine Art sales encompassing approximately 600 lots that include antiquarian books, fine ceramics & glassware, silver, jewellery and watches, Asian art, objet d'art, pictures & prints, clocks & barometers, rugs, and fine furniture and furnishings. Our June sales include a section of classic and vintage automobiles and motorcycles.

Contact: Edward Crichton ASFAV ecrichton@lsk.co.uk

Toys & Models

Lacy Scott & Knight hold the largest sales of Toys and Collectors' Models in the UK six times per year, to include; diecast vehicles, trains of all age and gauge, live steam engines, lead and plastic figures, Dinky & Corgi Toys, Matchbox, retro video games, railwayana, action figures & Star Wars etc

Contact: Oliver Leggett BA Hons oleggett@lsk.co.uk

Jewellery & Watches

Three Jewellery & Watches auctions per year to include vintage and modern items of quality and costume jewellery, fob, pocket & wristwatches, and all manner of bijouterie ranging from £50-500.

Contact: Hannah McWhirter FGA, DGA jewellery@lsk.co.uk

Twentieth Century Art & Design

These quarterly sales include pieces from the Aesthetic Movement, Arts & Crafts, Art Nouveau, Art Deco, Bauhaus, De Stijl, Modernism, Post-Modernism, Memphis, Modern Art, Pop Art and Contemporary Art, with items by names such as Clarice Cliff, Lalique, Moorcroft, & Liberty etc

Contact: Shaun Crichton MA scrichton@lsk.co.uk

Medals & Militaria with Country Pursuits

Twice-yearly Medals & Militaria sales to include military & honorific medals, antique firearms, uniforms, edged weapons and other related ephemera. Followed by an auction of sporting related effects to include taxidermy, horse-racing and fishing ephemera etc

Contact: Glenn Pearl gpearl@lsk.co.uk

Coins, Tokens & Banknotes, Music, Film & Sport Memorabilia

Twice yearly auctions to include antique & commemorative coinage and coin sets, banknotes and tokens, film posters, autographs, collectable vinyl, film props and much more.

Contact: Glenn Pearl gpearl@lsk.co.uk

Asian Art

To include Asian Art & Antiques ranging from fine Chinese porcelain to Japanese ukiyo-e woodblock prints, bronzes, jade carvings etc

Contact: Dr Jun Kong PhD (Cantab), MA (SOAS) asianart@lsk.co.uk

Wine, Port & Spirits

To include; fine and affordable wines, ports, spirits and related ephemera.

Contact: Edward Crichton ASFAV ecrichton@lsk.co.uk

PLEASE READ THE CONDITIONS OF SALE AS DISPLAYED AT THE AUCTION CENTRE AND ONLINE

TEL: **01284 748 625** E-mail: FINEART@LSK.CO.UK

The Auction Centre, 10 Risbygate Street, Bury St Edmunds, IP33 3AA