

FINE ART & ANTIQUES *with* CLASSIC CARS & MOTORCYCLES

Saturday 18th June at 10am



On View

Thursday 16th June 10am - 7pm

*Friday 17th June 9am - 7pm
and from 9am on the morning of the sale*

Buyer's Premium charged on all lots
at 22.5% plus VAT for Art & Antiques
and 10% plus VAT for Classic Cars & Motorcycles

Free live bidding through our website.

Image this page: Lot 1241
Front cover image: Lot 1464

LACY SCOTT
& KNIGHT

est. 1869

Chartered Surveyors
Land & Estate Agents
Auctioneers & Valuers

Ed Crichton ASFAV – Partner
Tel: 01284 748 622
Email: ecrichton@lsk.co.uk
www.lsk.co.uk

BOOKS & WRITTEN EPHEMERA

Please note that books are sold subject to no return

1001

The Village Flower-Show; Or, Self-Denial in Little Things. And Other Stories, Edinburgh: Oliphant, Anderson, & Ferrier (Late William Oliphant & Co.) 1881., embossed red cloth boards with printed cover, Pott 8vo. (1)
£60-80

1002

O'Flaherty, Liam; The Wild Swan and other stories, being No.10 of the Fumival Books, illustrated by P.V. Moon, first edition, limited edition No.481 of 550, published Joiner & Steele (but still showing William Jackson (Books) Ltd on title page), London 1932, together with **Strong, Leonard Alfred George; The Big Man**, being No.6 of the Fumival Books, first edition, limited edition No.68 of 550, published Joiner & Steele (but still showing William Jackson (Book) Ltd on title page), London 1931. (2)
£40-60

1003

Dixon, Henry Hall, "The Druid": Silk And Scarlet, London, 1862, Published By Rogerson & Thuxford, 246 Strand, together with **The Post And The Paddock (Hunting Edition)**, Scott And Seabright, London 1862 and **Field And Fern North and South**, London, 1865, each uniformly bound in red Morocco with gilt titles and gilt tipped pages, 8vo. (5)
£50-80

1004

Albert, Maurice: Poesies De Anacreon Nouvellement Traduites Et Accompagnees D'Une Preface Par Maurice Albert, Limited edition plus 50 copies on Chinese paper, Published Paris Librairie Des Bibliophiles Rue Saint-Honore, 338, 1885, half leather binding with five raised ribs and gilt title, 8vo. (1)
£40-60

1005

Ward, Thomas Humphry (Ed): The English Poets Selections With Critical Introductions By Various Writers And A General Introduction By Matthew Arnold, London Macmillan & Co. 1880, Vols I-IV, calf spines with gilt titles, marbled boards and pages 8vo. (4)
£50-80

1006

Fleetwood, Reverend John: The Life Of Our Lord and Saviour Jesus Christ: Containing An Accurate and Universal History Of Our Glorious Redeemer, From His Birth to his Ascension into Heaven. Together With The Lives and Sufferings Of His Holy Evangelists, Apostles, & Disciples, Who Have Sealed The Divine Truths Of Christianity Against The Objections of Atheists, Deists and Infidels. Hadley, Herts: Printed and published by Thomas Thomas and William Comish, etched plates by John Barlow (the frontis illustration of Christ's Resurrection dated 1813 but no further date apparent), front board detached, 4to., together with **a' Kempis, Thomas and Stanhope, George: The Christians Pattern: Or, A Treatise Of The Imitation Of Jesus Christ. In Four Books. Written Originally in Latin by Thomas a' Kempis. Now Rendered into English. To Which are Added Meditations and Prayers For Sick Persons. By George Stanhope, D.D. Late Dean of Canterbury, and Chaplain in Ordinary to His Majesty. A New Edition.** London, 1793, 8vo. (2)
£50-80

1007

Young, Reverend Edward, late Dean of Sarum: Sermons On Several Occasions, Volume the Second, The Third Edition, Printed for R. Knaplock in St. Paul's Church-Yard, J. Round in Exchange Alley and J. Tonson in the Strand, 1720, 8vo., together with **Cooper, Reverend Edward: Practical And Familiar Sermons** Designed For Parochial And Domestic Instruction. Vol. I. The Tenth Edition, London: Printed For T. Cadell and W. Davies, In The Strand. 1818, 8vo. (2)
£40-60

1008

Everett Green, Mary Anne: Lives Of The Princesses Of England From The Norman Conquest. London: Henry Colburn, Publisher, Great Marlborough Street, 1850-1855, Vols I-VI, full leather bindings with gilt titles, 8vo., together with **Strickland, Agnes: Lives Of The Tudor Princesses Including Lady Jane Gray And Her Sisters**, London, Longmans, Green, And Co. 1868 and **Lives Of The Bachelor Kings Of England.** London, Simpkin, Marshall And Co. 1861, 8vo. (8)
£50-80

1009

Lee, Guy Carleton: The History Of North America, Vols 1-20, Published George Barrie 1903-1907, University Edition Limited to One Thousand Numbered and Registered Sets of Which This is No. 914, 3/4 leather binding with marbled boards. (20)
£100-200

1010

Vernon, James: Letters Illustrative Of The Reign Of William III. From 1696 To 1708. Addressed To The Duke Of Shrewsbury, By James Vernon Esq., Edited by G.P.R. James Esq. Vols I-III, London: Henry Colburn, Publisher, Great Marlborough Street. 1841, gilt tooled leather binding, 8vo. (3)
£50-80

1011

R.K. Esq, (Robert Kenmore?): The Curious Modern Traveller. Being Some late and particular Observations on the greatest CURIOSITIES and ANTIQUITIES in most Parts of the World. Especially in Great Britain, Ireland, France, Holland, Germany, Italy, Egypt, Turkey, and The Holy-Land. GIVING A faithful Account of whatever is Remarkable both in the Works of ART and NATURE worthy the Observation of the most curious. WITH Geographical and historical Account of each different Nation, their Religion, Habits, Customs and Ceremonies &c. ALSO, An Account of Several wonderful Animals, Serpents, Birds &c Intersperse'd with many entertaining Stories of each Particular. Embelish'd with Copper Plate Cuts. London: Printed by A. M'Culloh, for J. Wakelin, and W. Norris, 1745, full leather binding foolscap 8vo. (1)
£50-80

1012

Smith's Classical Atlas Containing District Maps of the Counties described in Ancient History Both Sacred And Profane, London Printed for C. Smith, Mapseller extraordinary, To His Majesty. No. 172 Strand, 1820, folio containing 14 plates being 8 doubles and 6 singles. (1)
£50-80

1013

Ross, John: A Voyage of Discovery, made under the Orders of the Admiralty, in His Majesty's Ships Isabella and Alexander, for the Purpose of exploring Baffin's Bay, and inquiring into the Probability of a North-West Passage, second edition in two volumes, London 1819, printed by Strahan and Spottiswoode, Printers Street, for Longman, Hurst, Rees, Orme and Brown, Vol I with fold-out chart of Davis' Strait & Puffins Bay (with tears), Vol II with one section only of frontis fold-out sheet showing geological instruments. (2)
£50-80

All lots plus buyers premium of 27% including VAT

1014

Bourgoanne, Chevalier De: Travels In Spain Containing A New, Accurate, And Comprehensive View Of The Present State Of That Country, To Which Are Added, Copious Extracts From The Essays On Spain Of M. Peyron, In Three Volumes. Translated From The French, Illustrated With Twelve Copper Plates, London: Printed For G.G.J. And J. Robinson, Pater-Noster Row, 1789, Vols I-III, full leather 4to. (3)
£50-80

1015

Lawrence, Thomas Edward; The Diary of T.E. Lawrence MCMXI (1911), first edition, limited hand-numbered No.119 of 203, textured paper covered boards with parchment substitute paper having gilt top edge and untrimmed to the bottom, with all 13 tissue-guarded collotype photograph plates, published Corvinus Press, London, 1937, in brown card slipcase (worm) (1)
£500-800

1016

Lyle, R.C.: The Aga Khan's Horses, illustrated by Lionel Edwards R.I., Putnam, London, 42 Great Russel Street, 1938, number 40 of a limited edition of 140 numbered copies of which 125 are for sale, signed by the author, the artist, and H. H. The Aga Khan, quarter vellum binding with buckram boards, 4to. (1)
£100-150

1017

Hooper, W. Eden: Stock Exchange Sayings In Black And White, Autograph Edition Limited To One Thousand Copies, illustrated by Dudley Hardy J.J. Proctor contributing, no date circa 1910, cloth bound large 4to. (1)
£50-80

1018

Hofland, Thomas Christopher and Jesse, Edward: The British Angler's Manual, Or, The Art of Angling In England, Scotland, Wales and Ireland with Some Account of The Principal Rivers, Lakes and Trout Streams, embellished with numerous engravings on steel and wood, London 1848, Published H.G. Bohn, York Street, Covent Garden, and George Barclay, Castle Street, Leicester Square, half Morocco 8vo, together with **Ronalds, Alfred: The Fly-Fisher's Entomology**, With Coloured Representations Of The Natural And Artificial Insect; And A Few Observations And Instructions On Trout-And Grayling-Fishing. With Twenty Coloured Plates. Fifth Edition revised with Additions By Piscator; Published London: Longman, Brown, Green, And Longmans. 1856. in green cloth with gilt title, medium 8vo. (2)
£50-80

1019

Hill, Sir John: The Family Herbal, Or An Account Of All Those English Plants, Which Are Remarkable For Their Virtues, And Of The Drugs Which Are Produced By Vegetables of other Countries; With Their Discriptions And Their Uses, As Proved By Experience, Embellished With Fifty-Four Coloured Plates, Bungay: Printed And Published By C. Brightly, And T. Kinnersley, undated, 8vo. (1)
£50-80

1020

Anon: A Pocket Dictionary; Or, Complete English Expositor: Shewing Readily The Part of Speech to which each Word belongs... Also The Technical Terms are clearly explained... And The Names of the Cities and Principal Towns...A Work entirely new, and designed for the Youth of both Sexes, the Ladies and Persons in Business. To which is prefix'd An Introduction, Containing an History of the English Language, with a compendious Grammar: And a Recommendation of the Manuscript Copy, In a Letter from Dr. Bevis to the Publisher.The Third edition, greatly improved. London: Printed for J. Newbery, at the Bible and Sun, in St. Paul's Church Yard, 1765, with publishers price list to the rear, 8vo., together with **Hoppus, Edward: Hoppus's Practical Measurer**; Or, Measuring Made Easy To The Meanest Capacity, By A New Set Of Tables, Which Shew At Sight, The Solid Content of any Piece of Timber, Stone &c, Manchester: Published By S. Johnson And Son, Livesey St., & Church St., Liverpool. 1844, with fold-out frontis, 18 x 7.5cm. (2)
£50-80

1021

Dayrell-Reed, Trelawney; The Shove Ha'penny Board Displayed - A Treatise wherein, Together with the History, the Whole Theory and Practice of that diverting Art and admirable Mystery are described, published by Christophers, London, undated and no edition but c1934. (1)
£80-120

1022

Aoki Yamazaki; Plant dyeing Japanese colours 120 colours, limited edition No.1058 of 1200, published Bijutsu Shuppan Co. Ltd, 1982, in Japanese with some Latin nomenclature, to include natural plant-dyed fabric samples. (1)
£100-200

1023

Forrer, Matthi: Hiroshige, Prestel, Munich, London, New York, hardcover with 300 reproductions in clam shell box. (1)
£40-60

1024

Gyosh Hayami (速水 御舟), Works & Drawings, two volumes, published Mitsumura, Japan, 1981, in presentation slipcase. (1)
£200-300

CERAMICS & GLASSWARE

1028

An 18th century Delft tin glazed earthenware bowl, decorated with a mountain landscape, d.22.5cm, together with an 18th century English blue and white porcelain bowl, decorated with a pagoda within a mountain landscape, d.13cm (2)
£80-120

1029

An early 18th century German salt glazed stoneware flagon, of typical form, having single loop handle, h.31cm, together with another similar, h.28cm (2)
£70-100

1030

A 19th century French porcelain pot à l'eau ordinaire et cuvette, each having a hand painted central panel depicting two figures within a country landscape upon a gilt heightened apple green ground, interlaced L mark verso, bowl w.26cm and jug h.16.5cm (2)
£70-100

1031

A Royal Worcester old ivory porcelain moon vase, the cylindrical neck flanked by twin gilt handles, the body gilt decorated with ferns, standing upon a gilt scrolled base, printed puce and green marks to the underside, circa 1884, 29cm high
£70-100

1032

A collection of Royal Worcester blush ivory porcelain, to include a circa 1897 urn, decorated with flowers, shape 1654, h.23cm, an 1898 cleft jug, shape 1094, h.14cm, a pair of 1903 Royal Worcester cleft jugs, shape 1094, h.10.5cm each, and a 1903 vase, shape 958, h.7cm
£100-200

1033

A Nautilus porcelain ewer, of slender baluster form, with gilt scroll acanthus leaf handle, painted in the Charles Baldwyn style with swans in flight on a blue ground, with raised gold foliage, red factory mark Nautilus Porcelain verso, h.36.5cm
£400-600

1034

A Victorian Minton parian figure group 'The Distressed Mother', inscribed 'Reduced from Sir Richard Westmacotts by J. P. Peppercom' and dated 1848, 33cm high
£100-150

1035

A 19th century and later Derby King's pattern Imari palette porcelain part dinner service, comprising two large tureens, a graduated set of three serving dishes, a vegetable dish, two casserole dishes, two side plates, a soup bowl and two dinner plates
£400-600

1036

A 1930s Art Deco Shelley 'Sunset and Tall Trees' pattern part tea and coffee service, in the Cambridge shape, having printed marks verso (53)
£400-600

1037

A circa 1750 wine glass, the drawn trumpet bowl above a multiple spiral air twist stem and standing upon a slightly domed foot, h.16cm, together with a circa 1765 wine glass, the waisted bucket bowl above a single series corkscrew opaque twist stem and standing upon a slightly domed foot, h.15cm (2)
£100-150

1038

A circa 1765 wine glass, the ogee bowl above a double series opaque twist stem and standing upon a slightly domed foot, h.14.5cm, together with a circa 1760 wine glass, the lipped ogee bowl above a centre-knopped double series opaque twist stem and standing upon a flat foot, h.15cm (2)
£100-150

1039

A circa 1765 wine glass, the lipped and basal fluted ogee bowl above a double series opaque twist stem, the pair of spiral tapes surrounding a pair of spiral cables, standing upon a circular foot, h.14.5cm
£80-120

1040

A circa 1770 wine glass, the pointed round funnel bowl gilt decorated with festoons above a double series opaque twist stem with multiply band surrounding a pair of spiral tapes, standing upon a circular foot, 14.5cm high
£80-120

1041

A circa 1770 Bohemian glass brandy bottle, enamel decorated with birds amongst flora and inscribed 'Diebebrs flammen halfuns bey jammen?', h. 15.5cm
£50-80

1042

A circa 1790 Dutch glass carafe, the cylindrical neck with single loop handle, the lobed globular form body etched with birds, windmills and fruiting vines, 21cm high
£30-50

1043

A circa 1790 Dutch glass carafe, the cylindrical neck flanked by twin loop handles, the lobed globular form body etched with birds and fruiting vines, h.23cm
£30-50

1044

A matched set of three 18th century style wine glasses, each having a bell shaped bowl above a multiple series opaque and colour twist stem, the heavy white and red spirals surrounding a central column of white threads, standing upon a flat foot, 16cm high, together with a pair of 18th century style wine glasses, each having a bell shaped bowl above a stem with a white spiral surrounding a central column of multiple air cables and standing upon a flat foot, h.15.5cm (5)
£100-150

1045

A set of five 18th century style wine glasses, each having a round funnel bowl above a multiple series opaque white twist stem and standing upon a flat foot, h.15cm high (5)
£100-150

1046

A matched set of nine late Georgian glass rummers, each having a bucket bowl with fluted base above knopped stems and standing upon flat feet, largest h.14cm (9)
£80-120

1047

A pair of circa 1820 cut glass goblets, each having gilt decoration, the baluster form bowl above a faceted stem and standing upon a square section foot, signed 'Dreyfous' to the dimpled underside, 14cm high
£60-80

1048

A circa 1880 cut glass claret jug, having silver plated mounts, the faceted neck above a squat globular body with blue overlaid studded decoration, standing upon a star cut foot, 25.5cm high
£80-120

All lots plus buyers premium of 27% including VAT

I049

A suite of Cumbria crystal Grasmere pattern drinking glasses, comprising seven wine hocks, two brandy glasses, three champagne flutes and four sherry glasses (16)
£100-150

I050

A suite of Waterford crystal Lismore pattern drinking glasses, comprising sixteen wine glasses, four champagne flutes, eight tumblers and two sherry glasses, together with a cut glass decanter, the mushroom stopper above a conical body (31)
£80-120

I051

A set of seven 20th century German amber glass roemers, each having a cup bowl being wheel engraved with trailing flowers above a multi-knopped stem with applied prunts and standing upon a domed foot
£40-60

SILVER & SILVER-PLATED WARES**I055**

A Elizabeth I silver seal-top spoon, of typical form with fig shaped bowl and gilded lobed double baluster finial with engraved initials to the flat end, maker IF, London 1580, length 16.5cm, 0.75oz
£800-1,200

I056

A James I silver seal-top spoon, of typical form with fig shaped bowl and gilded lobed double baluster finial with prick-dot initials to the flat end, maker William Lovejoy (crescent enclosing mullet), London 1616, length 16.5cm, 1oz
£800-1,200

I057

A Charles I silver seal-top spoon, of typical form with fig shaped bowl and lobed double baluster finial with prick-dot initials and date to the flat end, maker Benjamin Yates, London 1629, length 15.8cm, 1oz
£800-1,200

I058

A Queen Anne Britannia standard silver sugar caster, of lower bellied baluster form, the lower half having gadrooned decoration, the upper half with spiral turned fluting, on a circular spreading foot, the removable caster having two section pierced decoration and a baluster finial, makers mark Ke (possibly Thomas Kedden), London 1713, further engraved I*W verso, caster section apparently unmarked, gross weight 3.9oz, h.15cm
£400-600



Lot 1058



Lot 1059

I059

A William & Mary Norwich silver beaker, of flaring cylindrical form with reeded foot, 3.1oz, maker James Daniel, Norwich 1696, h.9.1cm, dia.6.6cm

Note: Norwich had a guild of silversmiths from at least 1285, and an assay office between 1423 and 1701 when it was closed down. Norwich silver rarely comes to auction and is most often seen in museum collections. This beaker was examined by The Antique Plate Committee of The Goldsmiths' Company, case no 9019 and in their opinion this article is hallmarked in accordance with the Hallmarking Act 1973.
£4,000-6,000

I060

A George II silver salver, of shaped scrolling circular form and standing on three hoof feet, the surface floral and scroll chased with monogram to the centre, maker William Hunter, London 1751, 19.8oz, dia.29cm
£250-350

I061

A George II heavy silver dish, of shaped oval form with a stepped gadrooned border, engraved with double-headed eagle and raised hand with arrow to one side, maker Simon le Sage, London 1757, length 33.5cm, 27.2oz
£400-600

I062

An early George III silver wine or beer jug, having a hinged domed cover, S-scroll handle, and raised on domed foot, 24oz, maker Thomas Wallis, London 1769, h.21.5cm
£700-1,000

I063

An unmarked 18th century silver bodkin, of plain flattened tapering form, length 13.5cm, 0.4oz
£50-80

I064

A pair of George III silver wick scissors, having shaped engraved snuffer box and beaded decoration, maker William Abdy I, London 1785, 3.1oz, length 16cm
£60-80

I065

A pair of George III silver loaded candlesticks in the neo-classical taste, having chased reeded and fluted decoration, removable drip trays and turned wooden base, marks worn but possibly John Parsons & Co, Sheffield 1793, h.28.5cm
£200-300

I066

A George III silver teapot, of shaped rectangular form with banded decoration, walnut handle and finial, standing on four ball feet, maker Peter & William Bateman, London 1808, length 27.5cm, 18oz
£200-250

I067

A George III silver sugar caster, of plain bellied form to a stepped base, the removable caster of pierced and engraved form to a reeded finial, maker Thomas Shepherd, London 1799, h.13.5cm, 1.6oz
£50-80

I068

A George III silver hot water pot, of baluster form with gadrooned rims and flame finial, crest cartouche to one side and raffia covered S-scroll handle, maker Daniel Smith & Robert Sharp, London 1770, h.28cm, 22.5oz
£250-300

I069

A matched set of seven George III silver tablespoons, in the Old English pattern, all with engraved terminals, all London assays, 4 makers mark worn dated 1800, and 3 by Solomon Hougham and dated 1806, gross weight 7oz, lengths 17cm
£80-120

I070

A pair of George III silver table salts, of oval form with gadrooned rims and repousse decoration, each on four shell capped hoof feet, with blue glass liners and associated spoons, marks worn but cellars possibly D & R Hennell, London, associated spoons possibly Wakely & Wheeler (James Wakely & Frank Clarke Wheeler), London 1896, cellars length 8cm, gross silver weight 6.5oz,
£150-250

I071

A George III silver teapot, of shaped rectangular form with engraved banded decoration, walnut handle and finial, standing on four ball feet, maker Stephen Adams II, London 1789, length 30cm, 18oz,
£200-250

I072

A late 19th century continental silver sifting spoon, the terminal elaborately cast with a three-masted ship, various Hanau pseudo marks including Neresheimer, import marks for Berthold Mueller, 2.3oz, length 16.5cm
£40-50

I073

A 19th century silver cutlery suite in the fiddle pattern, comprising twelve table forks (to include 3x Smith & Gamble, Dublin 1832 and 6x Samuel Hayne & Dudley Cater, London 1859), twelve dessert forks (all Josiah Williams & Co, London 1899/1900), eight tablespoons (mainly London & Exeter assays, early 19th century), twelve teaspoons (all Joseph Rodgers & Sons, Sheffield 1901), some with monogrammed terminals, gross weight 85oz, lengths from 18 to 22cm (44 pieces)
£800-1,200

I074

A George IV silver mustard pot, of half reeded circular form with angular hinged handle and shell case finial, maker Charles Gordon, London 1829 4.4oz, h.5.5cm, dia.7.5cm, with blue glass liner; together with an associated spoon (2)
£50-80

I075

A set of four early Victorian silver tablespoons, in the Fiddle pattern with shell cast and initialled terminals, maker Thomas Wallis II, London 1839, each length 22.5cm, 9.7oz
£120-160

I076

A 19th century silver cutlery suite in the Fiddle pattern, comprising eight each of tablespoons, table forks, dessert spoons and dessert forks, and twelve teaspoons, mostly London assays but some Dublin (Richard Garde 1828) and one Exeter (Josiah Williams & Co 1853), some with engraved and initialled terminals, gross weight 72oz
£800-1,200

I077

A William IV silver miniature teapot, of plain squat circular form on stepped footrim, with applied acanthus leaf to spout, ebonised handle and baluster finial, maker Robert Hennell III, London 1834, gross weight 8.9oz, length 20.5cm, h.10cm
£100-150

I078

A William IV silver teapot, of fluted melon form with acanthus leaf decoration and flower head finial, standing on four shell and scroll feet, maker Charles Reily & George Storer, London 1837, length 28cm, 26.8oz.

Please note that this piece has ivory insulators, therefore we have registered this (submission reference A11R5AP2) as the piece meets the exemptions of being pre-1947, less than 10% ivory, and cannot be removed without causing damage to the piece.

£250-350

I079

A set of four Scottish Provincial silver tablespoons, in the Fiddle pattern with engraved S to terminal, maker Charles Murray, Perth, length 22.5cm, gross weight 8.5oz
£200-250

I080

A set of five Victorian Scottish silver teaspoons, maker probably William Clarke Shaw, Glasgow 1861, together with one other matching by James McKay, Edinburgh, date letter worn, all in the fiddle pattern with engraved terminals, gross weight 7.2oz, lengths 18cm (6)
£80-120

I081

A Victorian silver snuff box, of rectangular form with hinged lid, engraved with scrolling acanthus leaves and with worn initialled cartouche to the top, maker Frederick Marson, Birmingham 1861, 8.8 x 4.5 x 2.5cm, weight 3.8oz
£80-120

I082

A pair of Victorian silver fish servers, in the fiddle and thread pattern with 'rose' pattern chased terminals, maker John & Henry Lias, London 1844 & 1849, gross weight 11oz, slice length 30.5cm, fork length 27cm
£150-250

I083

A matched set of seven 19th century silver table forks, all in the fiddle pattern with monogrammed engravings to verso of terminals, makers include William Robert Smily, William Cripps, and John James Whiting, all London 1820s-1840s, gross weight 16.6oz, lengths 20.5cm
£180-240

I084

A harlequin set of eight 19th century silver tablespoons, mainly in the Old English pattern, some with monogrammed engraved terminals, makers to include Goldsmiths & Silversmiths Co Ltd, Sarah & John William Blake, and Benjamin Davis, all London, various dates from 1807+, gross weight 17.9oz, lengths approx 21cm
£200-300

I085

A pair of Victorian silver napkin rings, of typical circular form, repousse decorated all over and with horses head crest cartouche, maker Charles Edwards, London 1877, gross weight 2.8oz, dia.4.75cm, in green velvet lined Mappin & Webb fitted case,
£50-80

I086

A set of six late Victorian silver teaspoons, in the Old English pattern with monogrammed terminals, maker Charles Boyton II, London 1896; together with a George III silver example having crest engraved terminal verso, maker John Lambe, London 1773, gross weight 10.8oz, lengths 18.5cm
£100-150

I087

A harlequin set of six 19th century silver teaspoons, in the fiddle pattern with engraved terminals, makers being William Eley & William Fearn, John James Whiting, and Chawner & Co (George William Adams), all London, 1822-1870, gross weight 8.3oz, lengths approx 18cm
£80-120

I088

A Victorian silver topped and glass claret jug, the domed hinged cover with engraved armorial, maker Holland, Son & Slater (John Aldwinkle & James Slater), London 1883, h.23cm
£120-180

I089

A pair of Victorian silver grape scissors, in the Fiddle, Thread & Shell pattern, maker Goldsmiths & Silversmiths Co (William Gibson & John Lawrence Langman), London 1895, length 28.5cm, 3.6oz
£50-80

I090

A late Victorian silver bowl, of deep circular form, heavily embossed and standing on three hoof feet, maker Wakely & Wheeler (James Wakely & Frank Clarke Wheeler), London 1892, dia.16.5cm, h.9.5cm, 11.4oz
£100-150

I091

A Victorian silver hand mirror, having a circular bevelled mirrorplate, the reverse repousse decorated with a depiction of 'Angels Heads' from the 1787 painting by Joshua Reynolds, maker Edward Brown, London 1887, gross weight 5oz, length 21.5cm, head dia.10.5cm, in velvet and silk lined leather case stamped for Munday of Great Portland Street, London,
£80-120

I092

A Victorian silver miniature tankard, profusely bright cut decorated with birds amid bamboo and ferns, engraved monogram to front side, gilt-washed interior, maker Williams Evans, London 1879, 5.6oz, h.9.5cm
£80-120

I093

A pair of late Victorian silver pedestal bonbon dishes, of pierced and repousse decorated shaped oval form, maker Daniel & John Wellby, London 1891, 18oz, width 20.5cm, h.9cm
£200-250

I094

A late Victorian silver trophy bowl, of half-gadrooned circular form, bearing inscription 'METROPOLITAN AMATEUR REGATTA LONDON CUP 1. R. GUINNESS, 2. V. NICKALLS, 3. GUY NICKALLS, 4.A.E. THOMSON, 5. BLACKSTAFF, maker Mappin & Webb (John Newton Mappin), London 1894, dia.23cm, weight 21.95oz

Note: The Metropolitan Regatta was established in 1866 upon Eton College's Dorney Lake, and the event's first honorary secretary was Charles Dickens Jr. The winners here include Guy Nickalls and Henry Blackstaffe who went on to compete in the 1908 Olympics; and Rupert Edward Cecil Lee Guinness (2nd Earl of Iveagh) who later fought in the Boer War and became a Unionist MP

£200-300

I095

A pair of probably Victorian pierced silver-plated coasters, of deep circular form with alternate cross-hatch and scroll pierced design, having turned wooden bases, marks worn but possibly Henry Wilkinson & Co of Sheffield, dia.17cm, gross weight 18.7oz
£200-300

I096

An Edwardian Britannia silver salt shaker, with removable pierced cover and S-scroll handle, maker George Gilliam, London 1903, h.9.5cm, 4.7oz
£60-80

I097

An Edwardian silver miniature ewer, of half-reeded form with beaded rims to a square base, having high C-scroll handle, maker Robert Pringle & Sons, London 1906, h.18.5cm, 5oz
£60-80

I098

An Edwardian silver three-piece tea service, comprising teapot with ebonised handle and finial, cream jug and sugar bowl, all of half-reeded oval form, maker Mappin & Webb, Sheffield 1910, each piece further stamped Mappin & Webb London to the base, gross weight 22.3oz, teapot length 25cm and height 14cm
£250-300

I099

An Edwardian silver hot milk pot, of banded baluster form with reeded and scrolling handle and finial, to a stepped spreading foot, maker Daniel & John Wellby, London 1907, gross weight 27.6oz, h.24.5cm

Please note that this piece has ivory insulators, therefore we have registered this (submission reference 5CN6EQR4) as the piece meets the exemptions of being pre-1947, less than 10% ivory, and cannot be removed without causing damage to the piece.

£250-350

I100

An Edwardian Scottish silver six-division toastrack, the dividers of shaped flattened hexagon form, with loop handle and on bun feet, Mackay & Chisholm, Edinburgh 1906, further stamped 'MACKAY & CHISHOLM EDINBURGH', 7.8oz, length 13cm

£80-120

I101

An Edwardian silver twin handled drinks tray, having raised shell and piecrust rim, 82oz, maker Atkin Brothers, Sheffield 1910, w.63.5cm

£800-1,200

I102

An Edwardian silver deskstand, comprising rectangular tray with pen rests and twin silver topped cut glass ink bottles, the tray having gadrooned rim, cast corners and four scroll feet, the bottle covers with matching rim decoration, maker Goldsmiths & Silversmiths Co Ltd, London 1905, the tray further stamped 'GOLDSMITHS & SILVERSMITHS COMPANY 112 REGENT STREET W', gross weight 24.7oz, tray 21 x 14.5cm, bottle h.5.5cm

£150-250

I103

A cased set of six George V silver napkin rings, each of engine turned banded oval form with a circular vacant cartouche, maker John Rose, Birmingham 1929, gross silver weight 3.8oz, each w.5cm, in fitted velvet and silk lined morocco bound case, case w.19.5cm

£80-120

I104

A George V silver card waiter, of shaped circular form and standing on four hoof feet, maker James Dixon & Sons, Sheffield 1935, 12.6oz, dia.20cm

£120-160

I105

A George V silver sugar box, of lidded oval sarcophagus form standing on four scroll feet, maker Harrods (mark of chairman Richard Woodman Burbridge), London 1930, further stamped HARRODS LONDON S.W. to underside, length 12cm, h.9.5cm, 5.9oz

£70-100

I106

A George V silver bowl, of octagonal form with shell detail and standing on four hoof feet, maker the Northern Goldsmiths Company, Birmingham 1930, further stamped THE NORTHERN GOLDSMITHS COMPANY and Rd No. 743577, 12.3oz, dia.23c,

£120-160

I107

A George V silver tankard, having plain loop handle, stepped rim and clear glass base, initialled to the front, maker Viner's Ltd (Emile Viner), 17.4oz gross, Sheffield 1931, h.12.5cm

£140-180

I108

A George V silver teapot, of fluted lightly tapering circular form, having hinged fluted flat rim, with ebonised finial and handle, maker Garrard & Co, London 1916, h.11cm (excluding finial), weight 21.75oz

£220-280

I109

A George V silver and glass bottle coaster, the plain silver rim having a gadrooned rim, maker John Grinsell & Sons, Birmingham 1934, further stamped L8750G, with star cut engraved glass base, gross weight 11.6oz, dia.13.5cm

£60-80

I110

A Mappin & Webb silver drinks tray, having a raised and reeded gallery with pierced end carry handles, 92oz, London 1920, w.61cm

£1,000-1,200

I111

A Mappin & Webb three-piece silver tea service, comprising teapot, sugar and cream, each of half-reeded circular bellied form with banded geometric decoration, the sugar and cream London 1927, the teapot London 1942, gross weight 50.3oz

£600-800

I112

A mid-20th century Mappin & Webb silver salver, of shaped circular form with a gadrooned rim and standing on four claw feet, Sheffield 1953, 24oz, dia.30cm

£250-350

I113

A mid-20th century silver salver, of shaped oval form with a stepped gadrooned rim, maker William Comyns & Sons Ltd (Richard Comyns), London 1954, 31.8oz, w.31cm

£300-400

I114

A mid-20th century silver salver, having stepped wavy outline and standing on four scroll feet, maker Viner's Ltd (Emile Viner), Sheffield 1962, dia.36cm, 35.3oz

£400-500

I115

A George VI silver hot water pot, of plain baluster form with rattan covered handle, makers mark worn but probably C J Vander Ltd, London 1938, 21.4oz, h.23.5cm

£200-300

I116

A mid-20th century three-piece silver tea service, comprising teapot, sugar and cream, each piece of faceted oval form and standing upon four hoof feet, the teapot with ebonised finial and handle, maker Viner's Ltd (Emile Viner), Sheffield 1962, teapot length 27.5cm (tip to tip), gross weight 36.3oz

£400-500

I117

A mid-20th century silver topped cut glass vase, the silver rim of plain flaring form, makers mark worn, Birmingham 1944(?), the elaborately cut glass body with star cut base and of tapering form, h.24cm

£50-80

I118

A St James House Company silver and silver-gilt limited edition music box, playing O Come All Ye Faithful, limited edition No.55/500, made for Christmas 1982, 9.5oz, London 1982, dia.8.5cm, in fitted box

£80-120

I119

A St James House Company silver and silver-gilt cylindrical music box, 7.7oz, dia.7cm, in fitted box

£80-120

JEWELLERY & WATCHES

I125

A white metal, synthetic ruby and diamond three stone ring, featuring a centre step cut synthetic ruby flanked to either side by a round brilliant cut diamond, all in claw settings, synthetic ruby dimensions approx 9.75 x 7.85 x 4.7mm, weight estimated as 3.90 carats, diamond dimensions between approx 5.1 and 5.15 x 3mm, total weight estimated as 0.95 carats, assessed mounted collectively colour H to I and clarity SI1 to SI2, size L½, gross weight 6.3g, stamped and tested as platinum
£800-1,000

I126

A contemporary heavy yellow metal ropetwist necklace, intertwined with smaller white metal chain links, stamped 750 and tested as 18ct gold, 63.9g, width 7mm, length 63.5cm
£1,400-1,800

I127

An 18ct gold flat double curb link bracelet containing a small number of charms, principally being 9ct gold charms, including a George V gold full sovereign for 1925, gross weight 37.9g
£700-1,000

I128

A continental yellow metal finelink necklace, stamped 750 and tested as 18ct gold, containing a small number of miniature regalia charms celebrating the coronation of King George V, 7.9g, 42cm
£180-220

I129

A contemporary 18ct white gold bar pendant, set with seven brilliant cut diamonds, fitted to an 18ct white gold tracelink neck chain, the six round brilliants in a line setting, total diamond weight estimated as 1 carat, colour G and clarity SI, on pendant bale, pendant h.25mm, neck chain 45cm, 4.7g
£750-1,000

I130

A yellow metal, emerald and diamond asymmetrical cluster ring, set with two cabochon green emeralds surrounded by 36 small brilliant cut diamonds in bead settings, and two marquise diamonds in millegrain bezel settings, total diamond weight estimated as 0.65 carats, to a plain polished flat band shank stamped 18ct 750, tests as 18ct gold, 5.5g, size
£700-1,000



Lot 1133

I131

A white metal diamond three stone ring, featuring three graduated round brilliant cut diamonds in claw settings, diamond dimensions between approx 4.75 x 2.1mm and 5.2 x 2.92mm, total weight estimated as 1.06 carats, assessed mounted collectively colour J to K and clarity SI2 to I1, size L½, gross weight 4.8g, stamped and tested as platinum
£500-700

I132

A yellow metal bar brooch in the form of a flowering branch, with white metal roller catch fastening, brooch length 72mm, gross weight 12.1g, brooch stamped and tested as 24ct, roller catch tested as 18ct
£300-400

I133

A yellow and white metal horse and jockey brooch, comprising an enamel jockey riding a galloping horse set with 48 Old European cut diamonds and a 1.2mm cabochon blue stone for the eye, diamond dimensions between approx 1 x 0.6mm and 3.2 x 3.35 x 2.4mm, total weight estimated as 1.68 carats, assessed mounted collectively colour I to J and clarity SI1 to SI2, brooch dimensions 32 x 25mm, gross weight 11.8g, not marked but tested as 18ct
£800-1,200

I134

A yellow metal bar brooch, featuring a carved jadeite pyramid with camel and palm tree detail, jadeite dimensions 30 x 16mm, brooch length 48mm, gross weight 4.9g, stamped and tested as 9ct
£400-500

I135

A late Georgian yellow metal carnelian seal fob pendant, the intaglio carved with a coat of arms and Latin motto, unmarked but tests as approx 22ct, 14.8g, 26 x 22mm, h.34mm
£400-600

I136

A late Georgian yellow metal fob seal, the yellow hardstone intaglio carved with a coat of arms, 25.7g, unmarked but tests as approx 18ct, 22 x 24.5mm, h.33mm
£300-500

I137

An early 19th century yellow metal fob seal, the carnelian intaglio carved with a profile portrait, unmarked but tests as approx 9ct, 12.8g, 19 x 22.5mm, h.32mm; together with one other yellow metal fob seal, the pale hardstone intaglio with monogram below floral swags, unmarked but tests as approx 9ct, on ring handle, 15.8g, 22 x 26.5mm, h.29mm (2)
£200-300

Lot 1142



1142

An Art Deco white metal diamond swag and bow brooch, featuring 33 round brilliant cut and 79 baguette cut diamonds, all in claw and bezel settings with peg style clasp and clip, brilliant cut diamond diameters between approx 1.5 and 4.55mm, total weight estimated as 3.18 carats, baguette cut diamond dimensions between approx 2.2 x 1.6 x 1.2mm and 3.75 x 2.2 x 1.55mm, total weight estimated as 4.17 carats, assessed mounted collectively colour G to H and clarity VS1 to VS2, brooch dimensions 65 x 38mm, gross weight 23g, not marked but tested as 18ct, in Boucheron box
£2,000-3,000

1143

A platinum Art Deco style aquamarine and diamond oval panel cluster ring, featuring two round faceted aquamarine and eight Old European cut diamonds in grain and bezel settings, aquamarine dimensions each approx 4.75 x 3mm, total weight estimated as 0.76 carats, diamond dimensions between approx 2.75 x 1.3mm and 3 x 1.6mm, total weight estimated as 0.60 carats, assessed mounted collectively colour J to K and clarity SI1 to SI2, size P, gross weight 5.3g, hallmarked platinum, Sheffield 1997, sponsor DJR
£500-700

1144

An Art Deco white metal, sapphire and diamond navette shaped cluster ring, comprising five Old European cut diamonds with four rectangular sapphires in between, and three single cut diamonds grain set on each shoulder, all in millegrain settings, principle diamond dimensions approx 5.5 x 3.6mm, weight estimated as 0.70 carats, the four surrounding diamond dimensions between approx 3.75 x 2.6mm and 4.4 x 3.45mm, total weight estimated as 1.32 carats, shoulder diamond diameters between approx 1.3 and 1.9mm, total weight estimated as 0.09 carats, assessed mounted collectively colour I to J and clarity I1 to I2, sapphire dimensions each approx 3.3 x 2.3 x 1.85mm, total weight estimated as 0.64 carats, size L½, gross weight 3.5g, not marked but tested as 18ct
£700-900

1138

An early 19th century gilt metal fob seal, having hardstone intaglio; one other with yellow hardstone; and a gilt metal, agate and bloodstone set intaglio, h.46mm (3)
£100-150

1139

An early Victorian yellow metal fob seal, the grey hardstone intaglio carved with a lyre and Latin motto, on ring handle, 7.6g, unmarked but tests as approx 14ct, 11 x 13mm, h.20.5mm
£100-150

1140

A late Victorian 18ct yellow gold diamond two-row half hoop eternity ring, featuring twelve graduated Old European cut diamonds grain set within a boat shaped head, diamond dimensions between approx 1.95 x 1.45mm and 3.35 x 2.25mm, total weight estimated as 1.02 carats, assessed mounted collectively colour H to I and clarity SI2 to I1, size R, gross weight 4g, hallmarked 18ct, Birmingham, date obscure, sponsor CAM
£400-600

1141

An early 20th century hollow yellow metal bracelet, arranged as triple oval links united by twin flower heads giving a tramline effect (one flower head missing), to a fancy swept clasp with finelink safety chain, unmarked but tests as approx 18ct (fastening only tests as 14ct) 35g, 18cm, w.2.4cm
£400-600

Lot 1144



All lots plus buyers premium of 27% including VAT



Lot 1149

1145

A pair of white metal Art Deco style sapphire and diamond earrings, each comprising a rectangular cut sapphire suspended below a bar and chain link with two round and four single cut diamonds, all in claw and grain settings, with post and scroll fittings, sapphire dimensions each approx 5.39 x 4.49 x 3.87mm, total weight estimated as 1.94 carats, diamond diameters between approx 1 and 2.6mm, total weight estimated as 0.15 carats, earring lengths 23mm, gross weight 2.3g, not marked but tested as 18ct
£500-700

1146

A yellow and white metal Art Deco style parti-coloured tourmaline and diamond ring, comprising a centre rectangular cut tourmaline in a bezel setting, with four round brilliant cut diamonds in T-shaped grain settings on each shoulder, tourmaline dimensions approx 12.5 x 4.9 x 3.5mm, weight estimated as 2.07 carats, diamond diameters between approx 2.35 and 2.5mm, total weight estimated as 0.36 carats, assessed mounted collectively colour I to J and clarity SI1 to SI2, size Q½, gross weight 5.5g, not marked but tested as 18ct
£400-600

1147

A yellow metal, pearl and ruby heavy circular cluster ring, featuring a centre 7.3mm cultured pearl within a border of eight round faceted rubies, all in scalloped settings, ruby dimensions each approx 2.95 x 2mm, total weight estimated as 1.12 carats, size O½, gross weight 10.9g, stamped and tested as 18ct
£300-500

1148

A yellow metal pearl dress ring, featuring a 14.8mm Mabé cultured pearl in a bezel setting, size N½, gross weight 7.9g, not marked but tested as 18ct
£200-300

1149

A pair of white metal, sapphire and diamond oval cluster earrings, each featuring a centre oval faceted sapphire within a border of 14 round brilliant cut diamonds, all in claw settings with post and scroll fittings, sapphire dimensions each approx 7.9 x 6.11 x 3.1mm, total weight estimated as 2.76 carats, diamond diameters each approx 2mm, total weight estimated as 0.84 carats, assessed mounted collectively colour G to H and clarity SI1 to SI2, gross weight 6.2g, stamped and tested as 18ct
£2,500-3,000

1150

A yellow and white metal, ruby and diamond spray brooch, comprising multiple twisted strands set with 16 round faceted rubies, and three curved strands to the centre grain set with 32 single cut diamonds, with roller catch and hinged clip fastening, ruby dimensions each approx 2.6 x 1.25mm, total weight estimated as 1.12 carats, diamond diameters between approx 1 and 1.5mm, total weight estimated as 0.23 carats, assessed mounted collectively colour I to J and clarity SI1 to I1, brooch dimensions 68 x 35mm, gross weight 3.2g, not marked but tested as 18ct
£500-600

1151

A white metal diamond solitaire ring, comprising a centre round brilliant cut diamond in a six-claw setting, with six melee cut diamonds grain set in each shoulder, principle diamond dimensions approx 7.45 x 4.5mm, weight estimated as 1.52 carats, assessed mounted colour G to H and clarity SI1 to SI2, melee cut diamond diameters each approx 1.8mm, total weight estimated as 0.24 carats, size R, gross weight 3.8g, stamped and tested as 18ct
£1,800-2,200

1152

A yellow and white metal, sapphire and diamond oval cluster ring, featuring a centre oval sapphire within a border of ten round brilliant cut diamonds, all in bezel settings, sapphire dimensions approx 8 x 6 x 3.25mm, weight estimated as 1.45 carats, diamond diameters each approx 3.2 x 2.1mm, total weight estimated as 1.30 carats, assessed mounted collectively colour H to I and clarity SI1 to SI2, size R, gross weight 5.4g, stamped and tested as 18ct
£1,500-2,000



Lot 1152

All lots plus buyers premium of 27% including VAT

1153

A platinum tourmaline and diamond oval cluster ring, having a central green tourmaline within a border of six round brilliant and two baguette cut diamonds, all in claw and bezel settings, tourmaline dimensions approx 6.6 x 4.45 x 2.9mm, weight estimated as 0.62 carats, baguette cut diamond dimensions each approx 3.5 x 1.85 x 1.95mm, total weight estimated as 0.22 carats, round brilliant cut diamond diameters each approx 2.85mm, total weight estimated as 0.48 carats, assessed mounted collectively colour H to I and clarity VS1 to VS2, size R, gross weight 7.3g, stamped and tested as platinum 900

£300-400

1154

A white metal, synthetic spinel and diamond bar brooch, featuring a central rectangular cut synthetic spinel surrounded by six round brilliant cut diamonds, all in bezel settings, with roller catch fastening, synthetic spinel dimensions approx 13.55 x 10.21 x 9.39mm, weight estimated as 13 carats, diamond dimensions between approx 2.9 x 1.82mm and 3.45 x 2.05mm, total weight estimated as 0.64 carats, assessed mounted collectively colour I to J and clarity VS2 to SI1, brooch length 48mm, gross weight 10.2g, not marked but tested as 18ct

£400-600

1155

An 18ct yellow and white gold, sapphire and diamond three stone ring, featuring a centre oval faceted sapphire with a round brilliant cut diamond to either side, all in claw settings, sapphire dimensions approx 7.71 x 6.1 x 4.21mm, weight estimated as 1.81 carats, diamond dimensions each approx 5.61 x 3.35mm, total weight estimated as 1.28 carats, assessed mounted collectively colour H to I and clarity SI1 to SI2, size R, gross weight 5.1g, hallmarked 18ct, Sheffield 1994, sponsor FF Ltd

£1,500-2,000

1156

A pair of white metal, tanzanite and diamond triangular cluster earrings, each comprising a brilliant cut tanzanite within an abstract border of 18 melee cut diamonds in channel settings, with post and omega fittings, tanzanite dimensions each approx 6.65 x 6.9 x 3.65mm, total weight estimated as 1.86 carats, diamond diameters each approx 1.6mm, total weight estimated as 0.36 carats, assessed mounted collectively colour H to I and clarity SI1 to SI2, gross weight 7.9g, stamped and tested as 18ct

£500-800

1157

A white metal, ruby and diamond ring, comprising an oval cabochon cut ruby in a four claw setting with two baguette cut diamonds to each side, ruby dimensions approx 13.25 x 8.6 x 6.95mm, weight estimated as 8.23 carats, diamond dimensions approx 2.4 x 1.7 x 1.1mm, total weight estimated as 0.16 carats, assessed mounted collectively colour I to J and clarity SI1 to SI2, size M½, gross weight 5.1g, stamped and tested as 18ct

£300-500

1158

A yellow and white metal, emerald and diamond circular cluster ring, featuring a centre old cushion cut diamond within a border of six round faceted emeralds in rubover settings, and twelve Old European cut diamonds in millegrain settings, with trifurcated shoulders, cushion cut diamond dimensions approx 5 x 3.65 x 2.5mm, weight estimated as 0.35 carats, remaining diamond dimensions between approx 1.8 x 1.15mm and 2.8 x 2mm, total weight estimated as 0.72 carats, assessed mounted collectively colour I to M and clarity SI2 to II, emerald dimensions each approx 2 x 1.15mm, total weight estimated as 0.18 carats, size R, gross weight 8.8g, not marked but tested as 18ct

£600-900

1159

An 18ct white gold, emerald and diamond five stone ring, featuring a centre step cut emerald in a yellow claw setting, flanked on either side by two graduated baguette cut diamonds in bezel settings, emerald dimensions approx 9.78 x 6.75 x 4.3mm, weight estimated as 2.18 carats, baguette cut diamond dimensions between approx 7.21 x 2.5 x 1.9mm and 3.8 x 2.79 x 2.38mm, total weight estimated as 1.14 carats, assessed mounted collectively colour J to K and clarity VS2 to SI1, size M, gross weight 5.5g, hallmarked 18ct, London 1978, sponsor V&Cp, accompanied by a valuation from 1988

£1,000-1,500

1160

A white metal sapphire line bracelet, featuring eight sections with two blue and one colourless square cut sapphire in bezel settings, with five oval links between each, and a box style clasp, with two figure of eight safety catches, sapphire dimensions each approx 2.5 x 2.5 x 1.6mm, total weight estimated as 2.40 carats, bracelet length 200mm, width 4.9mm, gross weight 19g, stamped and tested as 18ct

£400-600

1161

A pair of white metal diamond drop earrings, each comprising two round brilliant cut diamonds in rex collet settings with a bar in between, post and scroll fittings, diamond dimensions between approx 4.5 x 2.7mm and 7.2 x 7.21 x 4.2mm, total weight estimated as 3.32 carats, assessed mounted collectively colour J to K and clarity SI1 to SI2, earring lengths 28mm, gross weight 6.6g, stamped and tested as 18ct

£3,000-5,000

1162

A yellow and white metal diamond three stone ring, featuring three graduated round brilliant cut diamonds in claw settings, diamond dimensions between approx 5.1 x 3.25mm and 5.55 x 3.29mm, total weight estimated as 1.63 carats, assessed mounted collectively colour I to J and clarity SI1 to SI2, size P½, gross weight 4.1g, stamped and tested as 18ct

£1,200-1,800



Lot 1161

All lots plus buyers premium of 27% including VAT



Lot 1164

1163

A yellow and white metal diamond flower cluster pendant, comprising 17 Old European cut diamonds in grain settings, with plain bale, attached to a yellow and white fetter link chain with rose metal cylinder box clasp, diamond dimensions between approx 1.8 x 1.05mm and 4.3 x 2.83mm, total weight estimated as 0.82 carats, assessed mounted collectively colour I to J and clarity SI1 to SI2, pendant diameter 31mm, chain length 400mm, width 2.75mm, gross weight 14.7g, stamped and tested as 18ct
£400-500

1164

A white metal, aquamarine and diamond ring, comprising a centre oval aquamarine in a four claw setting flanked by three round brilliant cut diamonds to either side, with trifurcated shoulders, aquamarine dimensions approx 22 x 16.35 x 10.85mm, weight estimated as 24.57 carats, diamond diameters each approx 2.5mm, total weight estimated as 0.30 carats, assessed mounted collectively colour H to I and clarity SI1 to SI2, size M, gross weight 8.6g, stamped and tested as 18ct
£2,000-3,000

1165

A pair of 18ct yellow and white gold, ruby and diamond oval cluster earrings, each featuring a centre oval faceted ruby within a border of twelve round brilliant cut diamonds, all in claw settings, with post and scroll fittings, ruby dimensions each approx 5.95 x 4.1 x 2.25mm, total weight estimated as 1.06 carats, diamond diameters each approx 1.5mm, total weight estimated as 0.24 carats, assessed mounted collectively colour H to I and clarity VS2 to SI1, gross weight 3.1g, hallmarked 18ct, Sheffield, sponsor FEU
£400-600

1166

A pair of white metal diamond off-square openwork cluster earrings, each with 93 round brilliant cut diamonds in grain settings, with hook wire fittings, diamond diameters between approx 0.8 and 2.9mm, total weight estimated as 0.80 carats, assessed mounted collectively colour G to H and clarity SI1 to SI2, earring lengths 28mm, gross weight 3.2g, not marked but tested as 18ct
£500-700

1167

A pair of white metal diamond circular cluster earrings, each comprising 37 round brilliant cut diamonds in claw settings, with hook wire fittings, diamond diameters each approx 2.5mm, total weight estimated as 3.70 carats, assessed mounted collectively colour I to J and clarity I1 to I2, length 30mm, gross weight 7.9g, not marked but tested as 18ct
£1,000-1,500

1168

A pair of white metal diamond half hoop earrings, each featuring 42 baguette and 9 round brilliant cut diamonds in bar settings, with post and omega clip fittings, baguette cut diamond dimensions between approx 1.6 x 1.1 x 0.5mm and 2.25 x 1.4 x 0.5mm, total weight estimated as 0.72 carats, brilliant cut diamond diameters each approx 1.4mm, total weight estimated as 0.16 carats, assessed mounted collectively colour I to J and clarity SI1 to SI2, earring lengths 20mm, gross weight 6.3g, not marked but tested as 18ct
£400-500

1169

A yellow metal multi-stone fringe necklace, featuring oval faceted garnet, amethyst, peridot, topaz, citrine, lemon quartz and prasiolite, all in bezel settings with 1mm trace link chain in between and an S hook clasp, stone dimensions between approx 4.85 x 4.1 x 2.85mm and 6.5 x 5.1 x 2.71mm, overall length 403mm, gross weight 10g, stamped and tested as 14ct
£400-500

1170

A pair of yellow metal, blue topaz and garnet drop earrings with matching pendant, earrings blue topaz dimensions each approx 8.8 x 6 x 4.55mm, total weight estimated as 3.46 carats, garnet dimensions each approx 2.9 x 2.15mm, weight estimated as 0.14 carats, length 30mm, pendant blue topaz dimensions approx 9.45 x 6.65 x 4.8mm, weight estimated as 2.17 carats, garnet dimensions each approx 2.7 x 2.2mm, total weight estimated as 0.24 carats, length 25mm, gross weight 1.1g, not marked but tested as 14ct (3)
£220-280

1171

A yellow metal sapphire bracelet, comprising twelve oval faceted sapphires in bezel settings, with double trace link chain in between and an S hook clasp, sapphire dimensions each approx 5.9 x 3.8 x 2.2mm, total weight estimated as 5.76 carats, length 185mm, gross weight 2.2g, not marked but tested as 14ct
£250-300

Lot 1172



1172

A Boucheron platinum and diamond oblong cluster ring, featuring a centre round brilliant cut diamond within a border of eight marquise and ten round brilliant cut diamonds, all in tiered claw settings, centre diamond dimensions approx 7.43 x 7.46 x 4.85mm, weight estimated as 1.64 carats, marquise diamond dimensions each approx 5.2 x 3.05 x 2.3mm, total weight estimated as 1 carat, round brilliant cut diamond dimensions between approx 3.2 x 1.8mm and 3.35 x 1.85mm, total weight estimated as 1.12 carats, assessed mounted collectively colour F to G and clarity SI1 to SI2, size P½, gross weight 7.5g, not marked but tested as platinum, signed Boucheron
£4,000-6,000

1173

A yellow metal coral half hoop eternity ring, comprising five oval pink coral cabochons with eight rose cut diamond points, all in scalloped claw settings, coral dimensions between approx 5.4 x 3.8 x 1.95mm and 7.65 x 4.65 x 1.9mm, total weight estimated as 1.81 carats, rose cut diamond diameters each approx 1.2mm, total weight estimated as 0.04 carats, size P, gross weight 4.8g, partial hallmark for Birmingham 1916, sponsor C&Co
£300-400

1174

A yellow metal oval lava stone cameo ring, depicting a female figure in classical dress, with trifurcated shoulders, cameo dimensions approx 30 x 22mm, size R, gross weight 8.6g, stamped and tested as 9ct
£120-180

1175

A yellow metal, pearl and diamond bombe ring, featuring a centre round brilliant cut diamond surrounded by six 4 to 5.1mm cultured pearls, with three-dimensional floral surround, diamond diameter 3.2mm, weight estimated as 0.11 carats, assessed mounted colour G to H and clarity SI1 to SI2, size L½, gross weight 11.3g, not marked but tested as 18ct
£400-600

1176

A white metal, sapphire and diamond bombe cluster ring, featuring a centre step cut sapphire within a border of twelve baguette, two marquise, and sixteen round brilliant cut diamonds, all in tiered claw settings with bifurcated shoulders, sapphire dimensions approx 6.8 x 6.1 x 4.2mm, weight estimated as 1.82 carats, baguette cut diamond dimensions each approx 3.9 x 1.75 x 1.5mm, total weight estimated as 1.20 carats, marquise diamond dimensions each approx 5.95 x 2.9 x 2.1mm, total weight estimated as 0.40 carats, round brilliant cut diamond diameters between approx 3.05 and 3.15mm, total weight estimated as 1.74 carats, assessed mounted collectively colour G to H and clarity VS2 to SI1, size L½, gross weight 9.8g, stamped and tested as platinum, accompanied by an insurance valuation
£1,400-1,800

1177

A white metal jadeite dress ring, featuring an oval jadeite cabochon in a six claw setting, jadeite dimensions approx 28 x 24 x 6.5mm, weight estimated as 37.47 carats, size O, gross weight 10.7g, stamped and tested as silver
£100-150

1178

An 18ct yellow gold, pearl and diamond pendant and earring set, the pendant comprising an 8mm cultured pearl suspended below a diamond flower cluster of six brilliant cut diamonds, to a plain bale, diamond diameters between approx 1.15 and 1.75mm, total weight estimated as 0.05 carats, pendant length 25mm, attached to a fine curb link chain with bolt ring clasp, chain length 390mm, width 0.4mm, gross weight 3.1g, hallmarked 18ct, Birmingham Millennium, sponsor JDT, the earrings each featuring a 7.2mm pearl suspended below a flower cluster set with six brilliant cut diamonds, post and scroll fittings, diamond diameters between approx 1.1 and 1.75mm, total weight estimated as 0.11 carats, earring lengths each 21mm, gross weight 3.4g, hallmarked 18ct, Birmingham Millennium, sponsor JDT
£300-500

All lots plus buyers premium of 27% including VAT

I 179

A white metal, aquamarine and diamond pendant, featuring a rectangular cut aquamarine suspended below a princess cut diamond, all in claw settings, with an integral filed curb link chain with bolt ring clasp, aquamarine dimension approx 8.7 x 6.85 x 4.5mm, weight estimated as 2 carats, diamond dimensions approx 3.1 x 3.2 x 2.15mm, weight estimated as 0.17 carats, assessed mounted colour H to I and clarity VS2 to SI1, chain length 410mm, width 0.6mm, gross weight 4.3g, chain hallmarked 18ct, London 1995, pendant tested as 18ct

Matching to lots I 180 & I 181

£300-500

I 180

A white metal, aquamarine and diamond three stone ring, comprising a centre rectangular cut aquamarine in four claw setting, flanked on either side by a princess cut diamond in a bezel setting, aquamarine dimensions approx 9 x 7.05 x 4.4mm, weight estimated as 2 carats, diamond dimensions each approx 3.25 x 2.25mm, total weight estimated as 0.38 carats, assessed mounted collectively colour H to I and clarity VS2 to SI1, size M½, gross weight 3.3g, not marked but tested as 18ct

Matching to lots I 179 & I 181

£400-600

I 181

A pair of 18ct white gold, aquamarine and diamond ear studs, each comprising a rectangular cut aquamarine suspended below a princess cut diamond, all in claw settings, with post and scroll fittings, aquamarine dimensions each approx 8.8 x 6.9 x 4.3mm, total weight estimated as 3.84 carats, diamond dimensions each approx 3 x 3.1 x 2.3mm, total weight estimated as 0.34 carats, assessed mounted collectively colour G to H and clarity VS1 to VS2, gross weight 4.4g, hallmarked 18ct, London 1985, sponsor T'OD

Matching to lots I 179 & I 180

£400-600

I 182

A yellow metal banded agate memorial brooch, the agate measuring approx 40mm, mounted in a twisted beadwork surround with open section at back and hook clasp, gross weight 29.2g, not marked but tested as 18ct, with base metal pin

£150-200

I 183

A yellow and white metal, sapphire and diamond winged insect brooch, comprising an oval sapphire set in the thorax and 42 rose cut diamonds set in the wings, head and abdomen, with hook clasp, sapphire dimensions approx 5.3 x 4.5 x 3.8mm, weight estimated as 0.80 carats, rose cut diamond diameters between approx 1.05 and 2.6mm, total weight estimated as 0.61 carats, brooch dimensions 48 x 35mm, gross weight 9g, tested as silver and 9ct

£300-400

I 184

An amber single string necklace, the graduated barrel beads on a knotted string, 60g, largest bead dia.25mm, smallest bead dia.12mm, gross length 61cm

£300-500

I 185

An 18ct white gold diamond circular cluster ring, featuring 19 round brilliant cut diamonds in tiered claw settings, diamond diameters between approx 3 and 3.35mm, total weight estimated as 1.75 carats, assessed mounted collectively colour I to J and clarity SI1 to SI2, size N½, gross weight 6.2g, hallmarked 18ct, London 1974, sponsor BY

£500-700

I 186

A yellow and white metal diamond lozenge shaped panel ring, comprising three graduated Old European cut diamonds within a border of eleven rose cut diamonds, with four set to either shoulder, centre diamond dimensions between approx 3.7 x 2.5mm and 5 x 2.7mm, total weight estimated as 0.90 carats, rose cut diamond diameters between approx 1.2 and 1.5mm, total weight estimated as 0.12 carats, assessed mounted collectively colour J to K and clarity I1 to I2, size O½, gross weight 5.4g, stamped and tested as 18ct

£400-600

I 187

A white metal, sapphire and diamond cushion shaped cluster ring, featuring a centre round brilliant cut diamond within a halo of eight melee cut diamonds with 10 calibre set sapphires, 18 further melee cut diamonds, and an outer border of 17 calibre set sapphires and 18 melee cut diamonds, with trifurcated shoulders each with four melee cut diamonds, sapphire dimensions each approx. 2.1 x 1.35 x 1.05mm, total weight estimated as 0.81 carats, diamond diameters between approx 1.2 and 2.1mm, total weight estimated as 0.34 carats, size O, gross weight 5.9g, stamped and tested as 18ct

£400-600

I 188

A white metal diamond rectangular cluster ring, comprising a centre baguette cut diamond within border of ten single and round brilliant cut diamonds, in grain and bezel settings, baguette cut diamond dimensions approx 4.3 x 1.75 x 1.8mm, weight estimated as 0.13 carats, single and round brilliant cut diamond diameters between approx 1.8 and 2.2mm, total weight estimated as 0.24 carats, assessed mounted collectively colour I to J and clarity SI1 to SI2, size O½, gross weight 6g, stamped and tested as 18ct

£250-350

I 189

A yellow metal four-strand diamond crossover ring by Frederic Sage, featuring a centre circular cluster with seven round brilliant cut diamonds, with a further 88 melee cut diamonds set in the strands, diamond diameters between approx 1 and 2.9mm, total weight estimated as 0.88 carats, assessed mounted collectively colour H to I and clarity SI1 to SI2, size R½, gross weight 8g, stamped and tested as 14ct

£800-1,000

I 190

A yellow metal seven strand diamond dress ring, featuring two oval sections each set with ten single cut diamonds, diamond diameters each approx 1.25mm, total weight estimated as 0.12 carats, size N½, gross weight 14.4g, gold marks for Portugal and tested as 18ct

£400-500

I 191

A white metal 'fleur de lys' sapphire and diamond cluster ring, featuring a centre section of seven round faceted sapphires within a border of seven Old European cut diamonds, all in millegrain settings with trifurcated shoulders, sapphire dimensions each approx 2.65 x 2.05mm and 3.5 x 1.75mm, total diamond weight estimated as 0.81 carats, assessed mounted collectively colour J to K and clarity SI2 to I1, size Q, gross weight 6.4g, not marked but tested as 18ct

£400-600

Lots 1192 – 1214 comprise a single-owner collection of Royalty related jewellery and effects, which were inherited by the vendor.



1192

A yellow metal, diamond and enamel brooch commemorating George VI as Duke of York, featuring a white enamel rose with centre Old European cut diamond surmounted by a crown set with twelve Old European cut diamonds, diamond dimensions between approx 1.5 x 1mm and 3.49 x 2.35mm, total weight estimated as 0.44 carats, assessed mounted collectively colour H to I and clarity SI1 to SI2, brooch length 25mm, gross weight 7.3g, not marked but tested as 18ct
£500-800

1193

A pair of yellow metal Russian Imperial double-headed eagle cufflinks, each featuring an engraved openwork design with chain and T bar ends, each diameter approx 19mm, length 30mm, gross weight 7.8g, not marked but tested as silver gilt
£60-90

1194

A late Victorian yellow and white metal, enamel and diamond brooch commemorating the 1897 Diamond Jubilee of Queen Victoria, featuring an enamel clover, rose and thistle representing the flowers of the commonwealth, surmounted by a crown set with 23 Old European cut diamonds, two rubies and two peridots, set with a 6 and 0 in twenty-eight Old European cut diamonds, with a later roller catch fastening, diamond diameters between approx 1.4 and 1.5mm, total weight estimated as 0.51 carats, ruby dimensions each approx 1.3 x 0.9mm, total weight estimated as 0.02 carats, peridot dimensions each approx 1.3 x 0.9mm, total weight estimated as 0.02 carats, brooch dimensions 25 x 30mm, gross weight 5.9g, tested as silver and 9ct, in Paul Longmire box
£300-500

1195

A white metal carved rock crystal Tudor Rose brooch, with the initials EA surmounted by a crown in the centre representing Elisabeth Angela, set with twenty-seven 0.75 to 1mm rose cut diamonds and a further five rose cut diamonds around the edge, having a roller catch fastening, brooch diameter 25mm, gross weight 5.3g, tested as 18ct, in fitted case
£300-500

1196

Four yellow and white metal diamond set royal monogram stick pins, one designed as an initial M surmounted by a crown within an openwork surround set with twenty-five Old European and rose cut diamonds, diameters between approx 1 and 1.7mm, total weight estimated as 0.10 carats, length 68mm, gross weight 3.2g, tested as 18ct; another initial M in an oval surround set with 40 rose cut diamonds, each diameter approx 1mm, total weight estimated as 0.16 carats, length 75mm, gross weight 3.7g, tested as 14/15ct with silver settings; a yellow metal double A royal crown and monogram stick pin set with twenty-five 0.7mm rose cut diamonds, length 70mm, gross weight 2.3g, tested as 18ct; and a white metal crown stick pin, set with twenty 0.7 to 1.1mm rose cut diamonds (2 deficient), length 65mm, gross weight 2.6g, metal not tested as heavily tarnished (4)
£200-300

1197

Four yellow metal stick pins, being a yellow metal quatrefoil pearl cluster featuring four 3.5mm cultured pearls and four 1.6mm rose cut diamonds, length 65mm, gross weight 2.4g, not marked but tested as 18ct with a 9ct pin; a yellow metal fox head pin, length 65mm, gross weight 3.4g, tested as 18ct; a yellow metal pin with centre 5mm cultured pearl and four 1.75mm rose cut diamonds, length 65mm, gross weight 2.3g, pin tested as 9ct with setting in 18ct; a 9ct yellow gold moonstone stick pin, having a 6mm moonstone cabochon within a ropetwist border, length 55mm, gross weight 15g, hallmarked 9ct, London 1979 (4)
£150-200

1198

Two yellow metal royal monogram stick pins, one with oval openwork detail and letter G set with fifty-nine 0.65 to 1mm rose cut diamonds, length 70mm, gross weight 1.8g; the other featuring a letter G set with twelve 1mm rose cut diamonds within blue enamel border stating royal motto 'Honi soit qui mal y pense' surmounted by a crown, length 70mm, gross weight 3.5g, both tested as 18ct
£120-180

1199

A yellow metal royal monogram stick pin, depicting the initial E set with fourteen 1.6 x 1.3mm rectangular turquoise surmounted by a crown set with twenty-seven 0.75 to 1mm rose cut diamonds, length 70mm, gross weight 2.5g, not marked but tested as approx 15ct, in fitted case
£80-120

1200

Two stick pins, one comprising the monogram VE against a blue enamel background with oval surround set with twenty rose cut diamonds surmounted by a crown, diamond dimensions each approx 1.25 x 0.8mm, total weight estimated as 0.10 carats, length 80mm, gross weight 3.2g, tests as platinum with base metal pin; the other depicting a Royal monogram VR in yellow metal surmounted by a crown in red and green enamel detail, length 80mm, gross weight 5.2g, stamped and tested as 18ct, in fitted case (2)
£120-180

1201

A yellow metal Royal monogram stick pin, comprising the initials VA within an orb surround set with eighty-one 1 to 0.8mm rose cut diamonds, sixteen 1mm square cut rubies, and three 1mm round emeralds, stick pin length 70mm, gross weight 2.9g, not marked but tested as 18ct, in fitted case
£120-180

All lots plus buyers premium of 27% including VAT

I202

A yellow metal George Prince of Wales stick pin, featuring an oval reverse crystal with initial G, blue enamel surround 'Honi Soit Qui Mal y Pense' and fleur de lys detail, stick pin length 70mm, gross weight 3.4g, not marked but tested as 18ct, in fitted case
£100-150

I203

A yellow and white metal, enamel and diamond stick pin, depicting a fleur de lys emblem set with eighteen 0.7 to 1.65mm rose cut diamond with blue enamel ribbon surround, total diamond weight estimated as 0.07 carats, pin length 70mm, gross weight 2.4g, tested as 18ct and silver, in fitted case
£100-150

I204

Two yellow and white metal diamond set stick pins, one comprising a royal monogram surmounted by a crown with thirty-seven 0.9 x 1.2mm rose cut diamonds, length 75mm, gross weight 2.2g, tested as 9ct with silver setting; the other being a pearl and diamond circular cluster, with a 4.5mm cultured pearl within a border of ten Old European cut diamonds, diamond dimensions each approx 2.2 x 1.8mm, total weight estimated as 0.50 carats, assessed mounted collectively colour I to J and clarity SI1 to SI2, length 60mm, gross weight 2.1g, tested as 9ct with silver setting (2)
£150-200

I205

A yellow and white metal diamond set Queen Alexandra commemorative brooch, featuring a centre triple A monogram set with thirty-two 1.45 to 1.65mm rose cut diamonds, within an inner border of forty-six 0.65mm rose cut diamonds surrounded by a blue enamel belt stating royal motto 'Honi soit qui mal y pense', and surmounted by a red enamel crown set with twenty-five 0.65 to 1.3mm rose cut diamonds, total diamond weight estimated as 0.30 carats, brooch diameter 35mm, gross weight 8.8g, tested as 9ct and silver
£500-700

I206

A Cartier yellow metal Royal monogram bar brooch, comprising the initials GM in blue and red enamel detail surmounted by a crown, with roller catch fastening, brooch length 25mm, gross weight 4.1g, signed Cartier London, in fitted Cartier box, tested as 18ct
£400-600

I207

A pair of 9ct yellow gold double-ended cufflinks, each featuring a 15 x 10mm octagonal plate engraved with Royal monogram VE and crown in enamel inlay, overall length 32mm, gross weight 11.6g, hallmarked 9ct, Birmingham 1961, sponsor HHP
£150-250

I208

A 9ct white gold button, cufflink and dress stud set, the four 14mm diameter buttons with chequerboard mother of pearl inlay, with matching double-ended cufflinks with 20mm chains, and two matching 7mm diameter dress studs (plus three base metal later replacements), gross weight 14g, hallmarked 9ct, Birmingham 1957, sponsor CS&FS, in fitted case
£200-300

I209

A pair of gilt metal double-ended cufflinks, each with two 19 x 14mm oval plates engraved with Royal monogram EA surmounted by crown in blue enamel inlay, cufflink lengths 30mm, gross weight 11.1g, not marked and possibly silver gilt
£80-120

I210

A pair of yellow metal reverse crystal cufflinks, each featuring the Royal monogram M surmounted by a crown with blue and white enamel border, with chain and bar ends, reverse crystal link dimensions 15 x 13mm, bar lengths 20mm, overall lengths 25mm, gross weight 15.6g, stamped and tested as 18ct, makers mark Benzie & Cowes
£400-600

I211

An early 19th Century yellow metal fob seal, set with an oval intaglio rock crystal engraved with a basket of flowers and motto 'A toutes Mon Coeur A une Mes Yeux' (Has all my heart has one my eyes), crystal dimensions 22 x 18mm, gross weight 11.9g, tested as 18ct, loose wax seal enclosed
£300-400

I212

An 18ct yellow gold rectangular cigarette case, with Edward VII monogram to the top left corner set with thirty-two 1.5 to 2mm Old European cut diamonds, with enamel detail, total diamond weight estimated as 0.40 carats, case dimensions 77 x 58mm, gross weight 96.2g, hallmarked 18ct, Birmingham 1901, sponsor JMB
£2,500-3,000

I213

A yellow metal rectangular cigarette case, having a royal monogram in the corner set with thirty-nine 1.1 to 1.55mm rose cut diamonds and forty-one 1.15 to 1.5mm sapphires (two sapphires deficient), and a 4.32mm round cabochon cut sapphire set in the button to open, engraved inside 'Presented to W James by King Alfonso XIII Nov 1907', complete with cigarette, case 86 x 73mm, gross weight 101.5g, stamped and tested as 18ct
£2,500-3,000

I214

A Vacheron & Constantin 14ct gold cased full hunter pocket watch, the obverse cover with Edward VII royal cipher(?) in blue and red enamel, engraved to the inside 'For Olav from Grandpapa Christiana, May 2nd 1908', having white enamel Arabic dial, keyless movement, gold inner back cover, movement with makers stamp and numbered 22706, 26.5g, dia.32mm; together with a yellow metal bar brooch spelling OLAV, with safety pin style fitting, unmarked but tests as 18ct, 2.5g, length 32mm, the whole in a fitted red leather box.

Provenance: The vendors family claims that this was a gift from Edward VII to his young grandson, who later became King Olav V of Norway.
£400-600

I215

C Pierson of London - a George III pair cased pocket watch, having tortoiseshell outer case and gilt metal inner case, white enamel convex Roman and Arabic dial, the chain driven verge fusee movement with knopped square pillars, pierced balance cock and signed to the backplate 'C Pierson London', numbered 339, dia.47mm
£150-250

I216

J W Benson of London - 'The Field Watch', a gent's 18ct gold cased half hunter pocket watch, having a signed white enamel Roman dial, subsidiary seconds dial, keyless movement numbered 538533, further engraved "THE FIELD WATCH By Special Warrants to HM The Queen & HRH the Prince of Wales, J.W. Benson 62 & 64 Ludgate Hill London", back cover with engraved armorial, gold inner back cover, gross weight 115.2g, dia.49mm, the whole in original velvet and silk lined fitted leather case

'The Field Watch' was apparently named after the Hunting Editor of The Field magazine recommended it; "I have used the watch for four months, and I have carried it hunting sometimes five days a week, and never less than three. For most weeks I have had one day, sometimes two, with hounds on foot; and with this strong test I have found it an accurate timekeeper. I recommend Messrs. Benson's hunting watch as one that can be depended on."
£800-1,200

I217

An early 20th century Swiss gent's 18ct gold cased half hunter pocket watch, having a white enamel Roman dial (badly damaged), subsidiary seconds dial, keyless unsigned movement, the back cover with engraved monogram, gold inner back cover, gross weight 110.2g, dia.50mm
£600-800

I218

A continental 14ct gold cased gent's full hunter pocket watch, having engine turned covers, unsigned white enamel Arabic dial with subsidiary seconds dial, keyless unsigned movement, gilt metal inner back cover, early 20th century, 94.5g, dia.52mm
£300-400

I219

A 9ct gold belcher link long guard chain, with loop catch, 9.1g, 150cm
£200-300

I220

A Victorian yellow metal belcher link guard chain, the links each being faceted, with a small number of additional white metal links, unmarked, 43.8g, length 140cm
£300-400

I221

A 9ct gold curb link watch chain with T bar and twin fastenings, 29.4g, 36cm
£400-500

I222

A yellow metal curb link watch chain, unmarked but tests as approx 14ct, with 18ct gold hook clip, 33.6g, supporting single coin and small yellow metal locket, 40cm, with separate 6cm section
£500-700

I223

A 9ct gold curb link long watch chain, with twin fastenings, 42.6g, w.4.5mm, length 76cm
£500-600

I224

An 18ct gold curb link watch chain with Albert and clasp, supporting a 1907 gold sovereign in unmarked yellow metal pendant mount, with perspex covers, chain weighs 37.7g, sovereign and mounts weigh 18.5g, gross weight 56.3g
£1,000-1,400

I225

A Gents stainless steel Rolex Oyster chronometer manual wind wristwatch, having round discoloured Arabic dial and signed movement, inner case engraved Oyster Watch Co Geneva Swiss, case numbered 114573, ref. 2595, case diameter 30mm
£400-600

I226

An Omega Geneve gent's 9ct gold automatic bracelet watch, circa 1970s, numbered 34799184, having a signed silvered dial with baton markers, date aperture, automatic movement, case dia.33mm, to integral 9ct gold mesh link bracelet, 65.2g, with original box, papers, and purchase receipt from Mappin & Webb Ltd of Ipswich
£800-1,000

I227

A Patek Philippe Calatrava gent's stainless steel model No.3483 manuel wind wristwatch, circa 1960s, having silvered dial signed PATEK PHILIPPE GENEVE BEYER, baton markers, cal.27-SC movement number 710886, with 18 jewels, the screw-down inner back cover numbered 2632438 3483, further stamped PATEK PHILIPPE & CO GENEVE SWISS, case dia.35mm, with black crocodile skin Patek Philippe bracelet and steel clasp
£10,000-15,000

I228

A ladies Chopard bi-metal Happy Sport wristwatch, the signed dial set with seven floating diamonds, total diamond weight estimated as 0.39 carats, quartz movement, cabochon ruby set lugs and crown, total ruby weight estimated as 0.73 carats, serial number 469897, in integral bi-metal bracelet, circa 1999, case dia.32mm, sold with box, service booklet and original Chopard purchase certificate from Berridge's of Ipswich dated February 1999, also with one additional spare link
£800-1,200



Lot 1227

All lots plus buyers premium of 27% including VAT

OBJET D'ART

I233

A George V 9ct gold cigar piercer, having a flared rim with removeable cover revealing a sprung action steel blade, maker Cohen and Charles, Birmingham, 1935, l.6.8cm (excluding suspension ring) 12g.
£100-150

I234

Lawrence Macdonald (1799-1878) - Mary Somerville, bronze relief portrait plaque, titled and date *ROMA MDCCCXLIV* (1844) in relief, etched *L. MACDONALD F* to the truncation, dia.22.5cm
£70-100

I235

After Claude Michel Clodion - A pair of French late 19th century bronze infant satyrs, modelled in standing pose leaning on naturalistic outcrop, each holding a flaming finialled staff and raised on integral white marble fluted shaped socle, overall h.41.5cm
£300-500

I236

In the manner of Franz Bergmann (1861-1936) - a 'family' of three miniature bronze kingfishers, each having fine plumage detail, the largest h.4cm, the smallest h.3.2cm
£200-300

I237

A mid-19th century gilt metal and porcelain pedestal vase, the pear shaped cobalt blue glazed porcelain body adorned with acanthus leaves, to a waisted stem and shaped square foot, h.31.5cm
£150-200

I238

A pair of mid-19th century gilt metal and porcelain four-light candelabra, each naturalistically fashioned as flowers and foliage, on cobalt blue pear shaped porcelain vases to shaped square bases, h.43cm
£300-400

I239

A late 19th century French gilt bronze encrrier, the raised and pierced three-quarter gallery with urn and swag surmount, the two cylindrical hinged inkwells with green glass reservoirs, further all over floral and figural decorated, w.34cm, d.23cm
£100-150

I240

A late 19th century French gilt bronze twin handled comport, the circular dish with convex inset enamel and gilt decorated panel painted with Ottoman female bust portrait, monogrammed *E.M.*, raised on floral scroll cast supports to integral white marble square base, with six loose blue glass beads, h.22.5cm, dia.34cm
£200-300

I241

A 19th century gilt and vitreous enamel nef ship, probably Austrian, the canopy, sail and hull enamel decorated with classical scenes, with cast figures and rigging, bearing three apocryphal enamelled flags, on wheels, makers mark LP to the bow (possibly Ludwig Pulitzer of Vienna), length 21cm, h.26.5cm
£500-800

I242

After Benedetto Boschetti (1820-1870) - Robed girl with dove and attendant snake after the Roman original in the Capitoline Museum, bronze, stamped to base B Boschetti Roma, h.23cm, the whole raised upon a black slate plinth, gross h.30cm
£200-300

I243

A late 19th century Norweigan treen souvenir snuff box, of elongated oval form, intricately carved with scrolling flora and a Nisse (Norwegian goblin), the sides inscribed with a motto about the Nisse travelling from Dovrefjell to Kristiania for an exhibition in 1883, length 9.5cm
£100-150

I244

A 19th century treen figurative nutcracker, the head as a smiling man wearing a cap, the tapered hexagonal handle unscrews revealing an aperture at the back of his head for nuts, length 16cm
£40-60

I245

After Jean-Baptiste Siméon Chardin (French 1699-1779) - House of Cards, miniature watercolour, shaped as an oval, signed D Chardin lower right, 9 x 7cm, in gilded and ebonised frame
£80-120

I246

Early 19th century English school - Young gentleman wearing a high-collared black jacket and white cravat, miniature watercolour portrait, of oval form, unsigned, 5.5 x 4.5cm, framed and glazed
£50-80

I247

Early 19th Century Prussian school - A young Hussar, miniature watercolour portrait, of oval form, hand-written inscription verso, 9 x 7.5cm, in gilt and ebonised frame
£150-200

I248

A George III mahogany knife box, having rosewood crossbanding and boxwood stringing, the converted interior housing three compartments (for four) decanters and stoppers, each with gilded decoration, w.23cm
£120-180

I249

A circa 1830 mahogany decanter box, having flush brass carry handle and hinged cover, opening to reveal three hobnail cut square decanters and stoppers, together with two probably later spirit glasses, w.22cm
£120-180

I250

An early Victorian burr elm tea caddy, having mother of pearl inset hinged cover opening to reveal two calamander fitted caddies, w.21.5cm
£100-150

I251

A Victorian style mahogany pillar-box, of cylindrical form with base drawer, h.42cm
£300-400

I252

A cased circa 1850s Brewster type stereoscopic viewer by the London Stereoscopic Company, together with 24 glass and approx 30 card slides, the binocular stereoscope in brown leather with brass oculars and gilt lettering, having hinged top and side opening with brass catch, the slides showing landmarks and topographical views, all in a fitted walnut and velvet lined locking case (no key present), case w.41cm
Note: there is an ivory knob to the top of the stereoscopic viewer; we have registered this (submission reference HMRALMJT) as the piece meets the exemptions of being pre-1947, less than 10% ivory, and cannot be removed without causing damage to the piece.
£200-300

I253

Nicole Freres - a Swiss rosewood and floral marquetry cased music box, the 13" cylinder playing four airs and working from end crank handle, stamped to both the mainframe and the comb, paper label numbered 38412, circa 1861, case w.55cm
£400-600

I254

A Victorian silver plated oil lamp, having an acid etched cranberry tinted glass shade and cut glass font above a Corinthian column base and cavetto moulded plinth, 86cm high
£200-300

I255

A Victorian brass oil lamp, having an acid etched green tinted glass shade above a green tinted milk glass font to a square tapered column and cavetto moulded plinth, h.85cm
£200-300

I256

A Victorian brass oil lamp, having a white and frosted Verre Moire silk glass shade above a cut glass font, standing upon three winged monopodia, h.35cm
£120-180

I257

A Victorian brass oil lamp, having a vaseline glass shade and clear cut glass font above a plain adjustable column and black glazed ceramic plinth, h.74cm
£120-180

I258

A Victorian brass oil lamp, having an acid etched glass shade and anthemion moulded yellow tinted milk glass font above an agateware type Corinthian column and square stepped plinth, h.87cm
£150-200

I259

A Victorian silver plated oil lamp, having an acid etched blue tinted glass shade and cut glass font above a fluted silver plated column and moulded plinth, h.78cm
£200-300

I260

A 19th century Sitzendorf blanc de chine porcelain oil lamp, the acid etched amber tinted glass shade above a heavily floral encrusted body supported by three putti, h.58cm
£250-350

I261

A 19th century blanc de chine porcelain oil lamp, the acid etched shade above a floral encrusted body flanked by twin loop handles, standing upon a rocaille and C scroll base, h.53cm
£120-180

I262

An early 20th century Lanternier & Cie, Limoges France bisque head doll, Cherie no.6, having fixed brown eyes, painted lashes and brows with open mouth the top teeth showing, with jointed composition body, impressed to the head AL & Co. Limoges Fabrication, Francaise, 41cm, together with a Heubach Koppelsdorf bisque shoulder-head doll, having rolling brown eyes and open mouth with four top teeth showing, the kid leather covered body with bisque forearms and composition legs, impressed 375 9/0, 40cm, one other Heubach Koppelsdorf bisque head doll with rolling blue eyes and composition body, impressed Heubach Koppelsdorf 250. 16/0 Germany, 22cm and two miniature bisque head dolls, 11/9cm. (5)
£50-80

I263

A Simon & Halbig Oriental bisque head doll, having black wig, fixed brown eyes with painted brows and open mouth with four top teeth showing, with pierced ears and jointed body, marked Simon & Halbig S&H 4, h.36cm
£80-120

I264

A rare Simon & Halbig Oriental bisque head doll, having rolling brown eyes and open mouth with two top teeth showing, with pierced ears (lacking earrings), having jointed composition body, stamped 1329 Germany Halbig S&H, h.37cm
£200-300

I265

A collection of polished malachite carvings, to include polar bear (h.18cm), sweetcorn cob, single pear, and other fruit
£120-180

I266

A Winsor & Newton Series 7 Kolinsky sable brush set, limited edition No.124/200, in fitted case, appears as new and unused, case w.36cm; together with outer sleeve and card box
£80-120

I267

A Winsor & Newton artist's watercolour 22 half-pan set, Millennium limited edition No.191/600, as new and unused, housed in outer velvet sleeve and wooden card box
£70-100

I268

A Sheaffer Daum Masterpiece gift set, comprising Sheaffer Legacy II fountain pen and Daum crystal inkwell, limited edition No.651/1000, boxed and sealed
£100-150

I269

A Winsor & Newton artist's oil colour Millennium chest, limited edition No.54/90, appears complete and unused, to include 20 paint tubes, four palette knives, gloss varnishes, brushes, pencils, and canvas boards, all in fitted hardwood box with brass carry handles, w.53cm
£600-800

I270

Robert 'Mouseman' Thompson - a carved oak circular table bowl, of shallow form, with typical adzed surface and central signature mouse, dia.29cm
£200-400

ASIAN ART & ANTIQUES

1273

A Chinese late Qing dynasty blue and white porcelain temple jar and cover, of baluster form, in the twisted lotus pattern, apocryphal six character Kangxi reign mark to the underside, h.32.5cm
£100-200

1274

A Chinese late Qing dynasty blue and white porcelain matched part tea service, comprising four matched teacups and two saucers, each in the crab and fish pattern, apocryphal four character Kangxi reign mark to the underside, saucers d.11cm (6)
£50-100

1275

A matched set of ten 18th century Chinese export porcelain plates, each having later European 'clobbered' decoration and pseudo red overglaze six character mark verso, 23.5 cm diameter
£120-180

1276

An 18th century Chinese export blue and white porcelain charger, of octagonal form, decorated with chrysanthemums before a fence within a diaper and flowerhead border, d.38cm, together with three 18th century Chinese export porcelain plates, largest d.26.5cm (4)
£120-180

1277

An 18th century Chinese export blue and white porcelain meat dish, decorated with a willow tree before a pagoda within a diaper border, w.38cm, together with a pair of 18th century Chinese export porcelain plates, d.23cm, and one other similar w.22.5cm (4)
£120-180

1278

A circa 1900 Chinese carved tortoiseshell vase, of square trumpet form, the panels each carved with birds amidst flowers and foliage, four character mark verso, h.33cm
£200-300

1279

An early 20th century Chinese silver cigarette case, of hinged rectangular form with strike to the hinged cover, one side decorated with perching cranes, maker probably Wing On, Hong Kong, circa 1920, 2.8oz, h.85cm
£50-80



Lot 1280

1280

A 19th century Chinese bronze tripod censer, having integral strap handles and on three short tapering feet, bearing apocryphal Ming mark verso, 1131g, dia.15cm
£200-300

1281

A pair of Chinese cloisonne enamel quail candelabra, each bird decorated in coloured enamels on a turquoise ground, with attached tri-colour gilt blossoming branches in the half-open beak with candle-prickets, standing on marble topped gilt bases with bamboo applied decoration, bird h.12cm, gross h.23.5cm One bird lacks wings and candlearms not attached
£400-600

1282

An early 20th century Chinese heavily carved and pierced hardwood side cabinet, the raised top over twin doors enclosing three interior long drawers, the integral plinth with grotesque mask carvings and paw feet, h.120.5cm, w.90cm, d.60.5cm
£300-400

1283

A Chinese faded 'rosewood' low occasional table, on square sectioned supports, w.41cm, d.31cm, h.51cm, together with one other similar example (2)
£100-150

1284

A Chinese 'rosewood' and marble topped occasional table, of circular form, with all-over leaf and flower carved decoration, the four supports united by platform undertier, dia.56cm, h.80cm
£150-250

1285

A set of eight early 20th century Siamese (Thai) loaded silver figural menu stands, each stamped Siam Sterling to underside, approx h.4cm, base dia. 3.5cm, gross weight 14oz
£100-150

1286

A Japanese Taisho period Satsuma earthenware bowl, highly decorated in gilt with multiple Rakan and figures to interior and around the exterior, marked to base with the Shimazu family crest and Omura () , dia. 24.5cm, retailed by Harrod's and with Harrod's box and wrapping.
£200-300

1287

A pair of Japanese Meiji period Seto blue and white porcelain poetry vases, each of ovoid form, underglaze decorated with bamboo, marked for Kawamoto Masukichi () (1852-1918) to the underside, 30.5cm high
£300-500

1288

A pair of Japanese Meiji period Arita porcelain bottle vases, each enamel decorated with panels of figures before a mountain landscape upon a blue ground decorated with birds amongst flowers, red enamel 'Hichoan Shinpo' () mark to the underside, 32cm high
£150-250

1289

A Japanese Meiji period cloisonné enamel and brass pot pourri jar and cover, of squat baluster form, intricately decorated in enamel and brass wire with symbols and motifs, h.9cm, dia.7.5cm
£50-80

1290

Gigado Ashiyuki (act. 1813-1833) - Kabuki actor Onoe Baiko III in Ume no Naniwa Hayasaki Genji (Osaka Plum Trees and the Early Blooms of the Genji Clan), Japanese woodblock print, circa 1825, image dimensions 35 x 23.5cm
£50-80

1291

Early 20th century Chinese school - Women having a meal on a riverfront garden terrace, ink and colour on silk, signed and with red artist seal mark lower left, framed and glazed, image dimensions 83 x 41cm
£200-300

All lots plus buyers premium of 27% including VAT

I292

Attributed to Chen Wen Hsi (Singapore 1906-1991) - Sparrows upon a branch, ink and colour on paper, signed and with seal upper left, image dimensions 59.5 x 44cm
£300-500

I293

Mortimer Luddington Menpes (1855-1938) - An elephant and retainers from Bikaner, oil on panel, signed lower left, 41 x 32cm.
Provenance: ex- The Museum Galleries, Drury Lane, London
£1,000-1,500

I294

Mortimer Luddington Menpes (1855-1938) - A standard bearer of Jaipur, oil on panel, signed lower left, 41 x 32.5cm.
Provenance: ex- The Museum Galleries, Drury Lane, London
£1,000-1,500



Lot 1293



Lot 1294

PICTURES & PRINTS

I297

Robert Burrows of Ipswich (1810-1883) - Boats on the Orwell at sunset, oil on board, 17.5 x 31cm
£200-300

I298

Thomas Smythe (1825-1906) - Lone traveller at rest with attendant horse and hound within a landscape, oil on canvas, signed lower left, 37.5 x 47cm
£600-800

I299

Thomas Smythe (1825-1906) - Ducks above the reed beds, oil on canvas (re-lined), signed lower left, 30 x 45cm
£250-350

I300

Thomas Smythe (1825-1906) - Man with terriers in a landscape, watercolour, signed lower left, 42.5 x 32.5cm
£200-300

I301

Edward Robert Smythe (1810-1899) - Traveller with horse and dog in a winter landscape, oil on canvas, signed lower left, 50 x 75cm
£1,000-1,400

I302

Henry George Todd (1846/7-1898) - Still life with fruit on a mossy bank, oil on canvas, signed and dated 1894 lower right, 25 x 30cm
£300-400

I303

§ Clive Madgwick (1934-2005) - Pheasants in a winter landscape, oil on canvas, signed lower right, 35 x 55cm, Agricultural Arts, Little Waldringfield, Sudbury, gallery label verso
£300-400

I304

§ Clive Madgwick (1934-2005) - Summers Day, Waldringfield, oil on canvas, signed lower right, 35 x 55cm
£500-700

I305

§ Clive Madgwick (1934-2005) - Riverbank at Winter, oil on canvas, signed lower right, 40 x 30cm
£300-400

All lots plus buyers premium of 27% including VAT

I306

§ Clive Madgwick (1934-2005) - Wensleydale, oil on canvas, signed and dated 1978 lower right, 45 x 60cm
£400-500

I307

§ Clive Madgwick (1934-2005) - A Suffolk barn under grey clouds, oil on canvas, signed and dated 1977 lower right, 50 x 60cm
£400-600

I308

Alfred Gilbert - Cambridge from Grantchester Meadows, oil on canvas, inscribed to stretcher verso, 20 x 34cm
£400-600

I309

19th century English school - Study of a girl on the riverbank with waterlilies, oil on canvas, 50 x 40cm
£100-150

I310

Early 19th century English school - Half-length portrait of a gentleman wearing a brown tunic, oil on canvas (re-lined), 64 x 50cm
£200-300

I311

Jules-Charles Aviat (1844-1931) - Bust portrait of a young woman, oil on canvas, framed as an oval, 73 x 59.5cm
£400-600

I312

Tom Flanagan (Brit. contemporary) - After Monet's Argenteuil, oil on billboard, signed lower right, 42 x 60cm
£100-150

I313

Tom Flanagan (Brit. contemporary) - After John Constable's The Haywain, oil on board, signed lower left, 60 x 90cm
£250-350

I314

David Cox Snr (1783-1859) - The watermill, watercolour, signed and dated 1845 lower left, 23 x 33cm
£80-120

I315

Edgar Longstaffe (1852-1933) - In Glen Nevis, Argyllshire, oil on panel, signed with monogram lower right, 34 x 27cm
£150-200

I316

Henry John Yeend King (1855-1914) - Water-girl, oil on canvas, signed lower left, 60 x 45cm
£200-300

I317

19th century Dutch school - Harbour scene with figures resting, oil on canvas (re-lined), 52 x 76.5cm
£150-250

I318

Late 19th century Dutch school - Ice-skaters in a Dutch river landscape, oil on canvas, 34.5 x 53cm
£200-300

I319

Jacob Henricus Maris (Dutch 1837-1899) - River landscape with barges and windmill, oil on panel, signed lower right, 26 x 39.5cm
£250-400

I320

James Robertson Miller (act. 1880-1912) - Church of Saint Pierre, Malines Street in Ghent, and Old Gateway near Market Square Bruges, set of three watercolours, each signed, 25 x 17.5cm
£160-240

I321

Ebenezer Wake Cook (1843-1926) - Uri Rotstock Lake Lucerne, watercolour, signed and dated '92 lower left, 19 x 30.5cm
£120-180

I322

Henry Thomas Schafer (1854-1915) - Pair; Matines and Freiburg, watercolours heightened with white, each signed and titled lower left, 25 x 20cm
£150-200

I323

19th century Italian school - Palazzo interior, watercolour heightened with white, signed with monogram AB and dated '72 lower right, 48 x 69cm
£120-180

I324

19th century Italian school - Palazzo colonnade, watercolour heightened with white, monogrammed AB and dated '72 lower right, 47 x 62.5cm
£120-180

I325

18th century continental school - Figures in a coastal landscape amidst classical ruins, oil on oak panels, 68 x 90cm, the whole in a 19th century gilt composition frame
£600-900

I326

19th century continental school - Soldiers on horseback before Melk Abbey, Austria, oil on canvas, 161 x 116cm
£400-600

I327

George Goodwin Kilburne (1839-1924) - Pair; The card school, watercolours, each signed with monogram lower left and lower right, 8.5 x 12cm
£200-300

I328

After Peter Paul Rubens (1577-1640) - The Garden of Love, oil on canvas, 96 x 130cm
£250-400

I329

§ Pierre de Clausade (1910-1975) - Coup de Soleil, sur la Loire, oil on canvas, signed lower left, further inscribed and titled verso, 46 x 54cm, Burlington Paintings, London, gallery label verso
£400-600

I330

§ Francis Russell Flint (1915-1977) - Avignon Cathedral and bridge, watercolour, signed lower right, 37 x 55.5cm
£300-400

I331

19th century school - Boats in choppy seas off the coastline, oil on canvas, 53 x 77cm (unframed)
£150-200

I332

Follower of Thomas Luny (1759-1837) - Boats on the estuary, oil on panel, 22.5 x 33cm
£200-300

I333

George Willoughby Maynard (1843-1923) - An extensive river landscape with lone fisherman, stone bridge and thatched cottage at sunset, oil on canvas, signed and dated 1882 lower right, 75 x 126cm
£150-250

I334

Alfred East (1844-1913) - A shady pool, oil on canvas, signed lower left, 40 x 55cm, labelled verso
£600-800



Lot 1337

I335

Charles Jones Way (Canadian 1835-1919) - A neglected corner, watercolour, signed, titled and dated 7 7 89 lower right, 34 x 24.5cm, annotated verso "No.1 'Christmas Pleasures' C J Way Royal Canadian Academy 4 Rue Lausanne Switzerland"
£100-150

I336

Abraham Hulk Jnr (1851-1922) - Lone traveller in a wooded landscape, oil on canvas (re-lined), signed lower left, 50 x 75cm
£180-240

I337

Thomas Sidney Cooper RA (1803-1902) - Crossing the Yorkshire moors, oil on canvas (re-lined), signed and dated 1835 lower right, 50 x 71cm
£2,000-3,000

I338

William Foster (1853-1924) - Summer border, watercolour, signed and dated 1916 lower right, 36 x 25.5cm
£60-90

I339

Frederick Edward Joseph Goff (1855-1931) - Strand on the green, watercolour heightened with white, signed and titled lower right, 19.5 x 33cm
£250-400

I340

Niels Peter Rasmussen (Danish 1847-1918) - A Prize Pigeon, oil on canvas, signed with monogram upper left and dated Sunday 3 Feb 1907, 28 x 38cm
£80-120

I341

Marjorie Cox (1915-2003) - Drambuie, pastel, signed and titled lower left and right, 48 x 36.5cm
£100-150

I342

Albert Edward D G Stirling-Brown (act. 1896-1929) - Portrait of a bay thoroughbred in his stable, oil on canvas (re-lined), signed and dated 1909 lower right, 40 x 50cm
£400-500

I343

Henry Calvert (1798-1869) - Bay horse trotting in a landscape, oil on canvas (re-lined), signed and dated 1840 lower left, 71 x 90cm
£700-1,000

I344

§ John Theodore Kenney (1911-1972) - A fox in covert, oil on canvas, signed and dated '62 lower right, 55 x 90cm
£400-600

I345

Stephen Gayford (b.1954) - Arctic Apparition, oil on canvas board, signed lower left, further annotated and dated September '12 by the artist verso, 45 x 29cm
£100-150

I346

Stephen Gayford (b.1954) - Royalty; African lions in Tarangire National Park, Tanzania, oil on canvas board, signed lower left, further annotated and dated September '12 by the artist verso, 60 x 40cm
£150-250

I347

Contemporary school - Half-length portrait of a young girl, charcoal on paper, 75 x 50cm
£80-100

I348

Contemporary Russian/Ukrainian school - Girl at a summer table, oil on canvas, inscribed in Cyrillic verso, 35 x 38cm
£100-150

I349

Sergei Kovalenko (Ukrainian b.1980) - Still life with fruit and flowers, oil on artist board, signed in Cyrillic upper right, 50 x 60cm
£250-350

All lots plus buyers premium of 27% including VAT



Lot 1351

1350

Sergei Kovalenko (Ukrainian b.1980) - Still life with fruit, flowers and glass of water, watercolour, signed in Cyrillic lower right, 44 x 58cm
£200-250

1351

§ Peter Brook (1927-2009) - Snow on the Pennine Hills above Holmfirth, oil on canvas, signed and titled lower left, 50 x 60cm
£2,000-3,000

CLOCKS & BAROMETERS

1355

An early 19th century mahogany bracket clock, having an unsigned convex white enamel Roman dial, twin winding holes for an eight day brass wire-driven fusee movement with anchor escapement and striking on a bell, the case with brass carry handle and pierced brass fishscale sound grilles, h.40cm (handle down)
£400-500

1356

A circa 1820 mahogany and brass inlaid droptrunk wall clock, the 12" convex white enamel dial signed W Ray and having Roman numerals, single winding hole for a brass eight day wire driven fusee movement, the droptrunk with glass lentical (pendulum a/f), h.50cm
£300-500

1357

G R Mullan of Bradford - a Victorian figured walnut droptrunk wall clock, having a signed circular white dial (overpainted), eight day wire driven brass fusee movement, h.58cm
£150-250

1358

Edward Nunn of Ely - a Victorian mahogany cased circular dial school clock, the signed 12" white enamel Roman dial having a single winding hole for a brass eight day wire driven fusee movement, dia.37cm
£150-200

1359

National Society London - a Victorian ebonised case school clock, having signed white enamel dial, brass bezel (lacking glass), single winding hole for a brass eight day wire driven fusee movement, case dia.37cm
£80-120

1360

A Victorian brass strut clock, having an unsigned circular white enamel Roman dial, single winding hole for an eight day brass cylinder movement with escapement showing to back, the swept frame surmounted with three winged griffins, h.25cm
£120-180

I361

John Harris of Bath - a circa 1900 onyx pietra-dura gilt brass strut clock, having circular white enamel Roman dial, keyless cylindrical movement, signed to the strut arm Harris Queens Square Bath, w.15.5cm, in original fitted case
£350-450

I362

A late 19th century French easel clock, the ceramic dial in the form of an artists palette decorated with quarter fruit-pickers and with Roman dial, eight day brass cylinder movement, all on gilt brass easel, h.45cm
£200-250

I363

Henry Browne & Son Ltd of Barking & London - an oak ships wheel barometer, of balloon shape, with signed silvered scale, h.30cm
£80-120

I364

A late 19th century gilt brass cased mantel clock, having an unsigned silvered chapter ring with embossed brass centre, twin winding holes for a French brass eight day cylinder movement, having outside countwheel and striking on a bell, the case with cast mask flaring foot, h.31cm
£100-150

I365

George Wadham of Paris - a circa 1860 marble and gilt bronze mantel clock, the whole surmounted with a bronze cupid above a signed white enamel Roman dial, with twin winding holes for an eight day brass cylinder movement by Vincenti, having outside countwheel and striking on a bell, case h.34cm
£200-300

I366

Desjardins of Paris - a mid-19th century gilt bronze mantel clock, having a signed gilded Roman dial, twin winding holes for an eight day brass cylinder movement with outside countwheel and striking on a bell (bell missing), the case surmounted with a classical maiden leaning upon an anchor, the frieze relief cast with nautical scenes, h.41.5cm
£300-500

I367

J H Silvani of Paris - a mid-19th century French gilt bronze and porcelain inset mantel clock, the case surmounted with birds and objects over a convex signed white enamel Roman and Arabic dial, with twin winding holes for an eight day French brass cylinder movement, having outside countwheel and striking on a bell, h.29cm
£300-400

I368

An early 20th century French gilt metal four-glass cylindrical mantel clock, having anthemion leaf cast frieze over enamel decorated Roman chapter ring (a/f), the eight day twin barrel cylindrical movement having mercury compensated pendulum and stamped Maple & Co Ltd Paris 2956, h.39cm
£120-180

I369

A circa 1900 French lacquered brass carriage clock, the fancy case having four fluted three-quarter turned pilasters flanking convex white enamel Arabic chapter ring, visible platform escapement, single barrel going eight day movement, unsigned, h.13.5cm (handle down)
£100-150

I370

A circa 1900 brass carriage clock, having unsigned white enamel Roman dial, visible platform escapement, twin barrel going eight day movement striking on a gong, case h.15cm (handle down)
£80-120

I371

A circa 1900 lacquered brass carriage clock, having a silvered convex Arabic chapter ring, visible platform escapement, the twin barrel going eight day movement striking on a gong, with push button hour and half-hour repeat, h.16.5cm (handle down)
£150-200

I372

A late 19th century French lacquered brass carriage clock, having a white enamel Arabic dial, visible lever platform escapement and single barrel going eight day movement, h.15cm
£100-150

I373

A circa 1900 lacquered brass carriage clock, having three-quarter turned pilasters flanking white enamel dial with subsidiary alarm dial, visible platform escapement, eight day single barrel going movement striking on a bell, h.14cm (handle down)
£150-200

I374

A 19th century brass skeleton clock, having unsigned silvered Roman dial, wire-driven eight day fusee movement with anchor escapement, h.28cm, the whole housed under a glass dome and on rosewood plinth, gross h.42cm
£150-200

I375

Richard Rayment of Bury (St Edmunds) (c1686-1754) - a mid 18th century oak longcase clock, having a 12" arched brass dial, cast gilt brass spandrels, silvered Roman and Arabic chapter ring, subsidiary seconds dial, rolling date dial, signed to the silvered plaque 'Rich Rayment BURY', twin winding holes for a brass eight day four pillar weight driven movement striking on a bell, the case having arched panelled door to a boxbase with starburst inlay, h.220cm
£600-800

FURNITURE & FURNISHINGS

I380

A Persian woollen Isfahan carpet, the central cream ground having a centre lozenge medallion issuing scroll flowers and foliage, all within multiple trailing tramline borders, signed, 555 x 332cm
£1,220-1,800

I381

A Persian woollen Kirman pictorial carpet, the black field having a central medallions issuing scroll flowers and foliage, dispersed with wild animals, all within canted corners and trailing tramline borders, 540 x 332cm
£2,000-3,000

I382

A Turkish Sparta woollen carpet, the grey ground having a central floral medallion, the whole within trailing deep border, 447 x 335cm
£600-800

I383

A Persian woollen Bokhara rug, the faded mauve ground having three central medallions within multiple trailing borders, signed, with further Kelim flatweave ends, 94 x 155cm
£100-150

I384

A Persian woollen hall runner, the blue ground decorated with stylised flowers and foliage within multiple trailing tramline borders, 110 x 502cm (heavily worn)
£200-300

I385

A Regency mahogany framed settee, of good size and having reeded outline, silk damask Anthemion leaf upholstery, on four ring turned tapering and half-reeded forelegs with brass cup and pot casters, w.193cm, seat d.64cm, seat h.42cm, back h.87cm
£400-600

I386

An 18th century joined oak three panel mule chest, the three plank hinged cover opening to reveal candlebox fitted interior, all above two base drawers, w.126cm, d.55cm, h.83cm
£200-300

I387

A late Georgian mahogany pedestal dining table, the oval tilt-top with boxwood stringing to a gun barrel ring turned column, on outswept supports with brass caps and casters, w.171cm, d.150cm, h.71cm
£500-700

I388

A set of eight William IV mahogany barback dining chairs, each having tulip moulded centre rails, drop-in seats, and raised on baluster reeded forelegs (6+2)
£300-400

I389

A George III mahogany and rosewood crossbanded Pembroke table, of serpentine outline, having single end frieze drawer and raised on slender square tapering supports with brass casters, w.71cm, d.49cm, h.72cm
£100-150

I390

A Victorian elm, yew and fruitwood Windsor chair, having yew wood pierced vase splatback, dish seat and crinoline stretcher, seat w.49.5cm
£80-120

I391

A William IV Scottish plum-pudding mahogany and rosewood crossbanded pedestal needlework table, having pull-out well and all raised upon a quatraform base, w.50cm, d.56cm, h.76cm
£120-180

I392

A 19th century fruitwood bench, the narrow one-piece top on ring turned trifirm end supports, w.190cm, seat d.15cm, seat h.48cm
£150-250

I393

A walnut and burr walnut chest, in the early 18th century style, the four-quarter veneered top with starburst marquetry inlay above three graduated long drawers, w.79cm, d.44cm, h.76cm
£300-400

I394

A Sheraton Revival mahogany and inlaid cabinet, of narrow proportions, the upper section with astragal glazed door, the base having drawer over cupboard door, w.54cm, h.185cm, d.54cm
£200-300

I395

A late Georgian mahogany gentleman's fitted washstand, the hinged top opening to reveal well-fitted interior with hinged mirror and numerous lidded and open compartments, above an arrangement of drawers to include commode drawer, w.71cm, d.51cm, h.92cm
£200-300

I396

A Sheraton Revival satinwood and polychrome decorated bijouterie table, having a hinged glazed cover, raised on slender square tapering supports with spade terminals, w.69cm, d.42cm, h.88cm
£250-350

I397

A French Napoleon III mahogany and gilt metal mounted vitrine, having glazed top, concave glass door enclosing a single plate glass shelf, w.68cm, d.33cm, h.115cm
£150-250

I398

A French Napoleon III rosewood and gilt metal mounted vitrine, the marble top having a pierced three-quarter gallery, over glazed door and sides enclosing three plate glass shelves, all with canted corners and cast mounts, w.65cm, d.38cm, h.147cm
£400-600

I399

A Victorian style oak window seat, having turned ends and on ring turned tapering supports, w.94cm, d.34cm, seat h.47cm
£150-200

I400

A set of eight George III joined oak dining chairs in the Hepplewhite style, each having pierced vase splatbacks and drop-in rush seats, together with one other similar example (8+1)
£150-250

I401

A William IV mahogany side table, having three frieze drawers and raised on tulip carved ring turned tapering supports, w.107cm, d.53cm, h.79cm
£150-250

I402

A Victorian figured walnut and gilt metal mounted pier cabinet, having twin glazed doors enclosing shelved interior, w.121cm, d.35cm, h.108cm
£200-300

I403

A continental walnut, kingwood and marquetry inlaid marble topped side cabinet, having gilt metal mounts, the whole of serpentine outline, the panelled doors opening to reveal shelved interior, w.126cm, d.46cm, h.103cm
£300-500

I404

An 18th century Dutch walnut and floral marquetry inlaid cabinet, the glazed door enclosing three shaped shelves, w.115cm, h.96cm, d.26cm
£200-300

I405

A mahogany serpentine front chest in the Georgian style, mid-20th century, having a brushing slide over four long graduated drawers, within blind carved canted comers, w.78cm, d.50cm, h.79cm
£250-400

I406

A mahogany apothecary side table, in the Georgian style, having four annotated frieze drawers, raised on chamfered square supports, w.110cm, d.30cm, h.76.5cm
£250-350

I407

A George III mahogany chest, the top having a thumb moulded edge above two short and three long graduated and cockbeaded drawers, with brass batwing escutcheons, within fluted bowed comers, all raised on ogee bracket feet, w.83cm, d.45cm, h.82cm
£300-500

I408

A Victorian figured walnut needlework table, having fitted interior over a silk damask lined well, all raised on spiral turned uprights, w.56cm, d.41cm, h.73cm
£120-180

I409

An Edwardian lowboy, being recently re-veneered in figured walnut with cross and feather banding, the four-quarter veneered top with further star marquetry inlay above an arrangement of three frieze drawers, on hipped and acanthus leaf capped cabriole supports, w.91cm, d.55cm, h.75cm
£500-700



Lot 1415

I410

An early 18th century walnut and inlaid chest, having crossbanded top over two short and three long graduated crossbanded and marquetry inlaid drawers, each with brass teardrop handles, raised on bracket feet, w.92cm, d.55cm, h.88cm
£250-400

I411

An oak and burr oak hall table, in the 18th century style, having four crossbanded frieze drawers and raised on ring turned supports, w.125cm, d.32cm, h.75cm
£300-500

I412

A Sheraton period mahogany, rosewood crossbanded and inlaid wine cooler, the hinged cover opening to reveal partitioned interior, w.52cm, d.28cm, h.66cm
£200-300

I413

A Santos D-end hall table, in the early 19th century style, having a crossbanded top over two frieze drawers, w.120cm, d.33cm, h.86cm
£250-350

I414

An early 19th century mahogany tea table, having a boxwood and ebony strung crossbanded fold-over top with swivel action, above a frieze drawer and raised on ring turned tapering and reeded supports, w.103cm, d.45cm, h.75cm
£80-120

I415

A Victorian mahogany twin pedestal partner's desk, having a triple inset gilt tooled leather writing surface, above three frieze drawers to either side, the pedestals each fitted with cupboard door opposing a flight of three graduated drawers, all raised on casters, w.154cm, d.120cm, h.75cm
£1,500-2,000

I416

A 19th century Dutch walnut and floral marquetry bijouterie cabinet, the top inlaid with a pair of vases issuing flowers and foliage, opening to reveal a glazed interior, w.64cm, d.42cm, h.82cm
£100-150

I417

A Victorian figured walnut pedestal loo table, having a four-quarter veneered oval tilt-top, to a base with hipped cabriole supports and pot casters, d.99cm, w.136cm
£80-120

I418

A William IV mahogany pedestal occasional table, the rectangular top with rounded comers and single end frieze drawer opposing dummy drawer, w.53cm, d.40cm, h.72cm
£80-120

I419

A Regency mahogany and brass bound wine cooler, of octagonal form, having zinc lined interior and raised on cut-down square supports, w.45cm, h.51cm
£400-500

All lots plus buyers premium of 27% including VAT

I420

A late 19th century French rosewood and marble topped pot cupboard, having a single frieze drawer over cupboard door disguised as twin drawers, all raised on slender cabriole supports, w.39cm, d.40cm, h.89cm
£150-250

I421

A Victorian giltwood and composition picture frame housing a later bevelled mirrorplate, the swept frame with shell, leaf and flower mouldings, w.122cm, h.151cm
£300-500

I422

A late 19th century giltwood and gesso oval wall mirror, the bevelled plate within a sectional divided surround and gadrooned outer frame, 112 x 84cm
£150-200

I423

A late 19th century giltwood and gesso bijouterie table, the glazed hinged cover having acanthus leaf moulded surround, the whole raised on turned, knopped and tapering fluted supports united by low X stretcher, w.95cm, d.64cm, h.80cm
£400-500

I424

A Victorian rosewood needlework table, having a single frieze drawer and on shaped flower head moulded end supports, w.66cm, d.41cm, h.78.5cm
£150-250

I425

An early 18th century and later joined oak gateleg table, having fall leaves on bobbin turned gatelegs united by low stretchers, w.128cm, d.52cm, h.75cm
£100-200

I426

A circa 1900 Japanese influenced satinwood inverted breakfront kneehole writing desk, having gilt tooled leather inset writing surface above an arrangement of three drawers and single cupboard door, the centre drawer with a small Japan lacquered landscape scene, the whole raised on brass casters, w.130cm, d.55cm, h.77cm
£400-600

I427

An Edwardian mahogany silver table, having a dish top over a single frieze drawer, w.82cm, d.51cm, h.73cm
£150-200

I428

A set of four Victorian mahogany balloon back dining chairs, each having silk damask stuffover seats and on French forelegs; together with a similar set of four to make a matched set of eight
£200-300

I429

A walnut and figured walnut open bookshelf, having a cross and feather banded top above two adjustable shelves, w.91cm, d.30cm, h.96cm
£300-400

I430

A late Regency giltwood and gesso convex wall mirror, having eagle pediment and twin candle arms, h.81cm, w.47cm
£120-180

I431

An early Victorian mahogany bowfront chest, of two short and three long graduated cockbeaded drawers, raised on turned feet, w.105cm, d.53cm, h.105cm
£300-400

I432

James Shoolbred of London - a late Victorian walnut framed and red leather upholstered armchair, with brass studded detail, turned forelegs with brass and pot casters, seat d.61cm, w.70cm, seat h.40cm
£300-400

I433

A Victorian rosewood marble-topped side cabinet, of serpentine outline, having twin glazed cabinets and a centre bowed shelf with mirrorback, w.177cm, d.51cm, h.93cm
£200-300

I434

A walnut framed wing armchair in the 18th century style, the whole re-upholstered in a floral decorated fabric, with squab cushion, on squat cabriole forelegs with shell carving, seat d.55cm, seat h.56cm (incl. squab cushion), back h.115cm
£350-450

I435

A Victorian walnut twin pedestal desk, having a gilt tooled brown leather inset writing surface above an arrangement of nine drawers, all raised upon casters, w.136cm, d.71cm, h.77cm
£300-400

I436

A 19th century mahogany and satinwood crossbanded serpentine front sideboard, having a centre drawer flanked by cupboard door and deep drawer, all raised on square tapering supports, w.176cm, d.82cm, h.93cm
£400-600

I437

A pair of walnut and burr walnut lamp tables, each having reeded crossbanded tops with canted corners and frieze drawers, w.50cm, d.50cm, h.56cm
£300-500

I438

A pair of contemporary oak lamp tables, each having four-quarter veneered crossbanded top over single crossbanded frieze drawer with brass petal handles, w.51cm, d.46cm, h.76cm
£400-600

I439

A circa 1830 polished mahogany squarefront chest, having two short and three long graduated and flame mahogany veneered drawers, each with turned wooden knobs, w.108cm, d.56cm, h.109cm
£200-300

I440

A late Georgian oak freestanding corner cabinet, having inlaid mahogany frieze over twin astragal glazed doors, enclosing a pair of shaped shelves, the base fitted with two cupboard doors, h.205cm, d.108cm
£150-250

I441

A Regency period and later polychrome painted bookcase, of good size, having twin glazed doors enclosing adjustable shelves, raised upon a shaped plinth, h.213cm, w.144cm, d.21cm
£400-500

I442

An antique joined oak chest-on-chest, 18th century and later, the upper section having two short and two long graduated cockbeaded drawers, the base fitted with two further long drawers, w.104cm, d.59cm, h.147cm
£200-300

I443

A Sheraton Revival satinwood and inlaid china display cabinet, the raised back and frieze penwork decorated with floral swags, the twin astragal glazed doors with rosewood crossbanding and enclosing single fitted shelf, w.127cm, d.49cm, h.140cm
£250-400

I444

A pair of oak freestanding open bookshelves, each having a crossbanded top above twin adjustable shelves, w.61cm, d.30cm, h.96cm
£400-500

I445

A Victorian faded mahogany framed spoon-end settee, having a swept frame and upholstered in a buttonback blue silk damask, w.183cm, seat d.55cm, gross h.94cm
£400-500

I446

A George III joined oak dresser, having three-tier plate rack over with dentil moulded cornice, the base having a two-plank top above three frieze drawers to a potboard base, w.182cm, d.46cm, h.202cm
£500-700

I447

A George III mahogany chest-on-chest, the upper section having blind carved canted corners flanking three short and three long graduated drawers, the base fitted with a brushing slide over three long drawers, all with replacement brass escutcheons, w.110cm, d.58cm, h.180cm
£300-400

I448

A George III mahogany and inlaid linenpress, the upper section having twin fielded panelled doors with neo-classical marquetry um inlays, enclosing fitted oak slides, the base fitted with two short and three long crossbanded drawers, w.127cm, d.62cm, h.195cm
£200-300

I449

A pair of oak and burr oak bedside chests, each having four-quarter veneered crossbanded tops above a brushing slide and four long graduated crossbanded drawers, w.39cm, d.37cm, h.74cm
£500-700

I450

A Sheraton Revival mahogany and inlaid china display cabinet, having bevelled mirrorback above a glazed and bowed door, flanked by twin neo-classical glazed doors, the whole with satinwood crossbanding, w.137cm, d.41cm, h.203cm
£300-400

I451

A joined oak wake table, in the early Georgian style, the oval fall leaves on twin gatelegs, w.210cm, d.60cm (leaves down), d.148cm (leaves up), h.74.5cm
£400-600

I452

A Victorian style mahogany window seat, having turned ends and on reeded supports, w.171cm, d.32cm, seat h.47cm
£200-250

I453

A Victorian mahogany twin pedestal cylinder desk, the top having three-quarter gallery over a cylinder enclosing pull-out writing surface with three gilt tooled leather hinged sections, the pedestals each fitted with three long graduated drawers, w.137cm, d.80cm, h.118cm
£200-300

I454

A good quality late 19th century mahogany bureau bookcase, the upper section having twin astragal glazed doors enclosing adjustable shelves, the four-quarter veneered and crossbanding sloping fall opening to reveal a birds-eye maple fronted fitted interior, all above four long graduated drawers with pierced brass batwing escutcheons, w.113cm, d.52cm, h.208cm
£400-600

I455

A pair of Victorian wrought iron garden window seats, each with turned brass end rails and strapwork seats, black painted, max w.92cm, seat w.45cm, seat h.46cm
£1,000-1,500

CARS & MOTORCYCLES WITH RELATED EFFECTS at 4pm

CARS & MOTORCYCLES IMPORTANT NOTICE

We are delighted to be offering this collection of Classics Cars and Motorcycles for sale, all of which are from deceased estates and private vendors across East Anglia and include a number of genuine 'barn find' examples.

For general and bidding enquiries please contact **01284 748 625** or fineart@lsk.co.uk

For more specific enquiries about individual vehicles please contact Ed Crichton on **01284 748 622** or ecrichton@lsk.co.uk

Please note that all of the cars and motorcycles only are subject to a buyers premium of 10% plus VAT. Associated lots from I495 onwards will be charged as 22.5% plus VAT.

Viewing

All of the lots are available for viewing at Hollow Road Farm, Fornham St Martin, Bury St Edmunds, IP31 1SJ, strictly on Thursday 16th 10am-5pm, Friday 10am-5pm and sale day 9am-3pm only.

Anyone viewing will be asked to produce photo ID such as driver's licence or passport, you will also be able to register to bid at this point and paddle numbers will only be issued upon production of photo ID or two further forms of ID such as utility bill and bank card.

Bidding

Clients are welcome to bid in person at our saleroom, leave commission bids, bid via the telephone or through our website with no additional surcharge. Bidding is also available through the thesaleroom.com, however this platform incurs a surcharge of 4.95% plus VAT. Please do not register to bid through this platform prior to bidding through our website as you will then be liable for thesaleroom surcharge regardless. The Cars & Motorcycles section will be sold at 4pm.

Payment

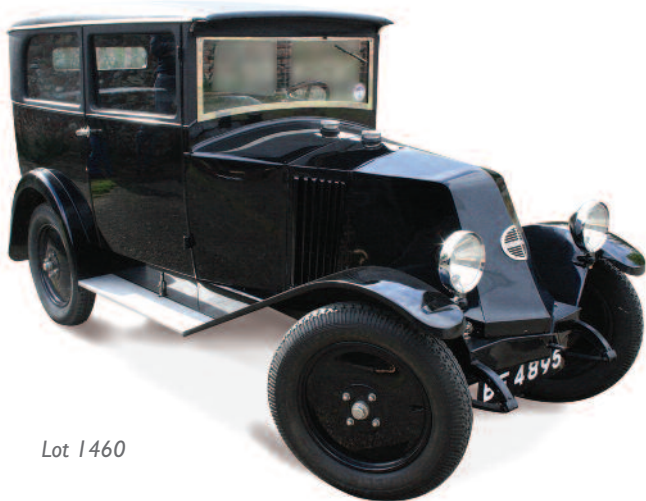
Cars will only be released upon cleared funds in our bank, and we strongly advise that all payments are made via bank transfer – details of which will be on your invoice. Please note that the maximum amount of cash which we can accept per buyer/invoice is £8,000, and for all lots in excess of £1000 card payments will need to be cleared into our bank before we can release the vehicles.

Collection

Upon receipt of cleared funds, please arrange collection strictly by appointment only through our offices by telephone 01284 748 625.

Please note that we have an insurance policy in place for all vehicles, and this expires on Friday 24th June; any vehicles remaining after this time are entirely at the buyers risk.

All lots plus buyers premium of 27% including VAT



Lot 1460

1460

A 1924 Renault KJ1 (LHD)

Reg BF4895

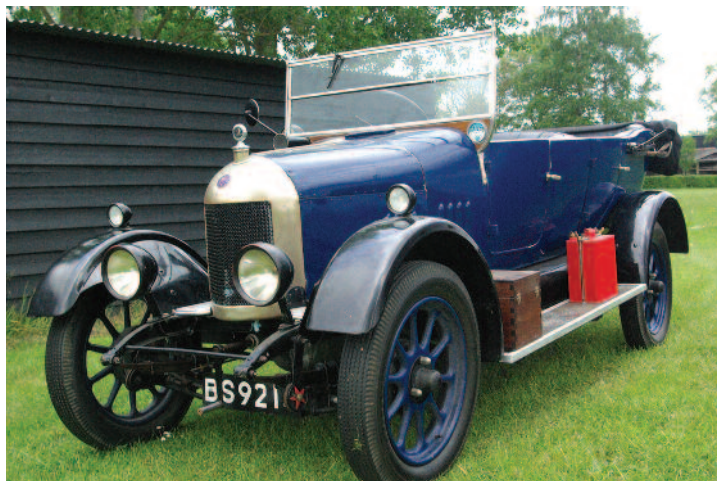
Chassis No. G969F12880

Engine No. T10413254

Black

This unusual bodied Renault has been restored to a very high standard by its vendor, the original body being manufactured by Farmer required the replacement of the ash frame, new upholstery, glass, new paint and a full mechanical overhaul. Like almost all Renaults up until this time, the car used a cone-based clutch, combined with a 3-speed manual transmission. The brakes only affected the rear wheels. The prominent "gills" on the sides of the bonnet/hood reflected the positioning of the radiator behind the engine. Power emanates from the diminutive 951cc four-cylinder engine which was rated at 6CV, 8.3HP. The rear seats are able to be folded down and the rear of the vehicle has a short upward opening window and a large lower folding down panel allowing the rear compartment to be used for larger loads.

£11,000-13,000



Lot 1462

1461

A 1924 Bayliss Thomas 10/22

Reg No. SV7705

Chassis No. 5263

Engine No. 5240.

Founded in Coventry in 1874, Bayliss Thomas & Co took its name from those of its two founders, and made bicycles and motorcycles under the 'Excelsior' brand name. Reconstituted in 1920 as the Excelsior Motor Co Ltd, by which time it had relocated to Tyseley Green, Birmingham, the firm introduced its first motor car in 1922, choosing to market it as a 'Bayliss-Thomas' to avoid any confusion with the Belgian Excelsior car. A wide variety of models were listed, all of good quality using conventional construction and making use of proprietary components. This car was an early example of the use of a Meadows 4EB engine and 3-speed gearbox. It is understood that Bayliss Thomas exported several cars of this period to Australia as rolling chassis to have coachwork fitted locally. The 4-seat tourer body is of a sturdy construction having the front seat back act as a brace across the body. The early Meadows 4EB engines are OHV units with in this instance a 1247cc capacity.

Brought back to the UK in 1999 the car has had several enthusiast owners, the history file shows that the engine was fully rebuilt in 2010 with new pistons, bearings, head and block machining and much more totalling in excess of £2000. The car is finished in Cream with Black wings and nicely upholstered interior, a black hood and side screens are present.

£7,500-9,500

1462

A 1926 Bullnose Morris

Cowley Tourer

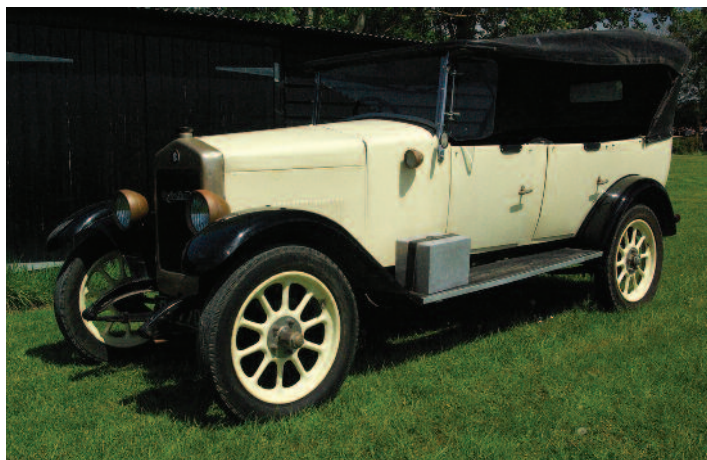
Reg No. BS9214

Chassis No. 143357

Engine No.242176

This smart looking tourer in Dark Blue and Black has been part of a local private collection which now requires downsizing, purchased following a long but thorough restoration, the previous owner completed all works needed to obtain a good running and driving example of this most popular of vintage tourers. A new ash frame has been fitted and the bodywork restored with a photographic record. As a concession to safety on modern roads it has LED indicators to side lamps and rear indicators fitted. Benefiting from a full hood and hood cover, there is a running board mounted toolbox, battery tray and petrol can. A rear luggage trunk is also present.

£8,500-10,500



Lot 1461

All lots plus buyers premium of 27% including VAT



Lot 1463

1463

A 1933/1934 Austin Seven APD (Military Tourer)

Reg No. YXG775

Chassis No. 276655

Engine No. 257943

This Austin Seven tourer was first registered in 1937 and is believed to have been one of many War Department contracts for which Austin supplied cars to a military specification. Clearly, over the years, this car has been restored and has received changes to its original appearance. However, one key military specification is the use of a gravity fed petrol tank mounted on the bulkhead instead of the civilian mechanically pumped rear mounted tank.

Finished in Dark Blue with Black wings the interior is a mix of original and later, the seat backs described as original and the bases recovered while the soft top (coming with side screens) is said to be good. The starter motor has recently been refurbished. The car comes with a VSCC eligibility document dated 2nd May 2018.

£7,500-10,000



Lot 1464

1464

A 1936 Singer Le Mans 1500, reg CXY 56, black

Chassis no. LM58

Engine no. 157

Odometer 40537

This car is a restored example of the iconic Singer Le Mans with 1.5 litre 6 cyl engine of which only 71 were built.

Singers started as a bicycle maker and ventured as a motor manufacturer in 1905. They expanded and became the main challenger to MG in the thirties producing British Sporting cars. In early 30's Singer designed a small two seater sports the Nine with a 972 cc capacity engine. This proved successful and they went larger by producing the 1.5 litre 6 cylinder Triple Carburettor car which could travel at 70 mph and was timed at 103 mph at Le Mans.

Singer set up their own competition department in March 1933 and success followed including Le Mans, Brooklands, TT and RAC Rally with 1.5lt. Later they were a major player in the trials that were enormously important in Thirties; London Exeter, Lands End, London Edinburgh and Scottish Six Days.

An aside was that Betty Haig drove her 1.5 to Berlin in 1936 and won the Olympic Rally and came home with an Olympic Gold medal.

This is an original example of a major 1930's British Sporting Cars and much of its value is reflected in the history of the marque. The car has undergone extensive restoration, comes with a supporting folder of paperwork and is in excellent fully running order.

£68,000-75,000

1465

A circa 1938 Morris 8 series II two-door saloon in blue

Registration FNO 904.

In barn-find condition and for full restoration. Further, more comprehensive, images will be uploaded to our website once the vehicle has been delivered to us.

The Morris 8 was produced by Morris Motors from 1935-1948. It was inspired by the sales popularity of the Ford Model Y, styling of which the 8 closely followed. The success of the car enabled Morris to regain its position as Britain's largest motor manufacturer. The car was powered by a Morris UB series 918cc four-cylinder side valve engine, producing maximum power of 23.5bhp. The gearbox is a three-speed unit with synchromesh on the top two speeds. The Morris 8 was well equipped with the driver being provided a full set of instruments including speedometer with a built-in odometer, oil pressure and gauges, and ammeter. In 1938, the car was updated to match the other cars in the Morris range; approximately 54,000 were produced in this year alone.

£1,000-2,000

All lots plus buyers premium of 27% including VAT



Lot 1466

I466

A 1962 Volvo P1800 'Jensen' 1780cc (restoration project)

Registration 180HAB

Chassis No. 3812

Engine No. 3763

Odometer 23932

White with red interior.

This vehicle has been off the road since 1993, dry-stored and was previously subject to part restoration project. Bodywork has been rubbed down. Some evidence of rust spots, but generally sound. Believed to be complete with chrome badges and trim, but most are loose. With folder of receipts and history.

The Volvo P 1800 is undoubtedly the most elegantly, exquisitely and dynamically designed Volvo of the twentieth century. The Volvo P 1800 was designed by Per Petterson who was employed at Carrosseria Frua in those days. The Volvo P1800 came onto the market in 1961 as a coupé and was initially built at Jensen's in England. The P1800 became world-famous for the series of "The Saint" in the 1960s, with Roger Moore as Simon Templar in the leading role. After building 6000 cars in 1963, production of the P1800 was relocated to Sweden, and the car was then named the 1800 "S" (Sverige). In September 1969, the P1800E came onto the market with a Bosch fuel injection system, a modified dashboard and had disc brakes all around. The P1800 ES estate /coupé came onto the market in 1971.

£8,000-10,000

I467

A 1963 Chrysler Imperial Crown convertible (LHD) 6700cc

Reg No. AJH770A

Chassis No. 9233236673

Engine No. 923

Odometer 90287

The Chrysler Imperial, introduced in 1926, was the company's top of the range vehicle for much of its history. Models were produced with the Chrysler name until 1954 and again from 1990 to 1993 and the company tried to position the cars as a prestige marque. Chrysler advised state licensing bureaus that, beginning in 1955, the Imperial was to be registered as a separate make. It was an attempt to compete directly with GM's Cadillac and Ford's Lincoln distinct luxury-focused marques rather than GM's traditional and lower-priced brands, Buick and Oldsmobile. This car is stunning, originally bought in San Jose California where it spent all its American life before coming to the UK one of 531 originally made, a sibling of the car driven by Doris Day in the film "Move over darling".

This series of cars are one of the last full chassis models with a very substantial frame to accommodate its convertible body. Everything on this car is powered by either electrics or hydraulics, the large 413 cubic inch (6.7 litre) V8 engine and 3 speed automatic transmission provide a smooth and comfortable drive. Originally painted in Grey and upholstered in Black, our vendor chose to completely strip the car of its paint and interior which had suffered from the harsh sunshine of California and has repainted it in Alabaster White with Red Leather interior along with a new matching quality hood. We are advised that the car is in all round outstanding condition.

£24,000-28,000



Lot 1467

All lots plus buyers premium of 27% including VAT

I468

A 1963 Series III Alpine (LHD)
Unregistered in the UK but with
Import duty paid documentation.
Chassis No. B9202161
Odometer reads 93,115.
Red with Black interior.

Like its sister car in this auction, this car was imported from California in 1992. The vendor reports that it was in running condition shortly before purchase, the US owner had started to strip the car down in order to carry out a full refurbishment which then stalled. Upon inspection much of the car is in sound structural condition however there is some corrosion between the inner sills and their respective floor pans. Trim and chrome have been dismantled and we believe some of this may now be missing. There is a very good hardtop with the later squared rear screen fitted along with wire wheels. Once again, we believe this vehicle will make a rewarding restoration of a model which is now becoming a rare sight on our roads. Potential purchasers should undertake their own evaluation of this "Barn Find" vehicle.

£1,000-2,000

I469

A 1964 Series IV Alpine, (LHD)
Unregistered in the UK but with
Import duty paid documentation.
Chassis No. B94102066
Odometer 17,243.

This ex-Californian car was personally imported around 30 years ago with two other vehicles also in this sale, unfortunately the owner has never started its restoration and is sold as a barn find. However, the car was in excellent condition when purchased in the USA and the bodyshell seems to be in good condition now having been in dry storage lending itself to an economic restoration.

The Series IV cars were the first of this series to have less distinctive fins on the rear wings. Powered by the 1592cc Rootes Group four-cylinder engine producing 87bhp, the Alpine makes a pleasant alternative to its MG MGB competitor.

This car was originally painted Red but treated to a Green respray in the US. It comes fitted with wire-wheels.
£2,000-3,000



Lot 1470

I470

A 1968 Daimler V8-250 Automatic
Reg no. MHP573F
Chassis No. PIK2664BW
Engine No. 7K2756
Odometer 42,800
MOT 31/03/2023

This Silver Grey metallic Daimler is in superb order with excellent panel gaps and a beautiful interior in Black leather with polished wood dashboard and perfect instrument panel. The underside of the car is also excellent with no signs of any corrosion. Our vendor advises that the previous owners spent in excess of £25,000 on a thorough restoration. The 2548cc V8 engine runs smoothly with good oil pressure and is mated to a 3-speed Borg Warner 35 automatic gearbox. The car is fitted with Power Assisted Steering and a Heated Rear Window.

Introduced in October 1967, the V8-250 was a minor facelift of the long-running 2.5 V8 saloon

Differences were minor; slimline bumpers and over-riders, negative-earth electrics, an alternator instead of a dynamo, padded door cappings and reclining split-bench front seats.

The vendor has a printed copy of the Workshop Manual and also a collection of the DLOC magazines.

£15,000-18,000

I471

A 1969 Daimler 250
Sovereign four-door
saloon
Registration No. PTB
213G

Chassis No.
PIK4772BW
Engine No. 7K4911
Odometer 55,282 miles
 Vehicle was acquired by our vendor in August 2017, but due to old age has been little-used and with only very minor mechanical works carried out. Vehicle is fully running, sold with V5 and folder of history.
£8,000-10,000



Lot 1471

All lots plus buyers premium of 27% including VAT

I472

A 1970 MG Midget (LHD)
Reg No. EGV139H
Chassis No. G-AN5-
UA/86241-G
Engine No. I2CJ-DA-H/27076
Body No. I8617

Like the Alpine, this Midget Mk III was imported from California however, upon its arrival in the UK the car was UK registered and put into use. Due to other commitments, the vendor stored this car initially outside before moving it to join its other compatriots in dry storage. This Midget built in May 1970 is in Bronze Yellow with Satin Black sills and black interior. The bonnet has severe corrosion on its leading edge and will require replacement. Similarly, the boot edges have succumbed to rust and replacement would be recommended. The front inner wings and slam panel appear to be sound along with the front and rear wings, boot floor is tidy and the majority of the sill structures appear strong. Both "A" posts are severely corroded from the top to bottom which means there will be structural repairs required in these areas. All in all a great basis for rejuvenation and/or conversion to RHD.

£700-1,200



Lot 1474

I473

A 1972 Alfa Romeo 2000 Spider Veloce convertible
Chassis No.2470348
Engine No. AR00512/25622
Red
Odometer 43281

The Alfa Romeo Spider was manufactured from 1966 to 1994 in four series, this being a series II, and assembled by Pininfarina in Grugliascho. Series II was bought out in 1970 and saw changes to exterior styling, together with numerous other small changes; both inside and out. 1971 saw the Spider Veloce receive a new larger 1962cc, 132hp engine, and consequently the name was changed from the 1750 to the 2000 Spider Veloce. In total, just over 38,000 models were produced.

The car is in running order. Bodywork fully restored with replacement front and rear wings. Underside sealed. Interior original and tired in places.

£10,000-12,000



Lot 1473

I474

A 1973 Triumph TR6 2.5lt manual convertible left-hand drive
Reg No. EVN 544L
Chassis No. CF84340
Engine No. CF7774UA
Emerald green with black leather interior.
Odometer 75685

The Triumph TR6 was introduced in January 1969 and produced until 1976. USA spec TR6's such as this were assembled at Canley, with the US model having 104BHP. The TR6 was the best-seller of the TR range when production ended. This MkII 2.5 litre straight 6 is twin carburetted for the US market. This produced 104 net BHP in a peak torque of 143lb-ft at 3500rpm. This model has a four-speed manual transmission with electrically switched overdrive operating on 3rd and 4th gears.

This example was imported from the US in 2018, where it had undergone significant restoration and repaint to the body, with the original colour being aubergine.

Sold with folder of history

£12,000-14,000



Lot 1475

1475

A 1973 Volvo P1800 ES Automatic

Reg No. BDL41L

Chassis No. 3893

Engine No. 765

Gearbox No. 300559

Body No. 3932

Odometer 14680, Note Vendor states from UK import in 1973 to 1987 38,201, new speedo fitted and current reading is to present day, total mileage circa 52,900

The Volvo P1800 ES was the last model manufactured in the P1800 series only being produced between 1972 and 1973. Effectively its design was a shooting-break derivation of the P1800S Coupe which was introduced in 1961 using the mechanical underpinnings of the Volvo Amazon/122 series. The P1800S was popularised by the 1962 British TV series "The Saint" starring Roger Moore.

Our Volvo has been extensively restored using many well known model restorers, the simply outstanding result can only be described as just short of Concours condition. Finished in Porsche Red with Black interior, Red carpeting, gleaming chrome, under bonnet detailing of superb quality. The vendor reports that over the years that this restoration has taken place over

£25,000 has been spent. The 1986cc B20F engine starts and runs beautifully driving through a smooth changing Borg Warner 35 automatic gearbox. The original type of radio has been fitted but is not connected as the owner didn't want to make unnecessary holes in the interior, he also advises that the HRV is not operating. A large file of restoration

invoices come with the car. Two other Volvo P1800's reside with the vendor upon which he wishes to concentrate, hence this car is reluctantly offered for sale.

Full body and mechanical restoration 2014/15 – bodywork and paint by ACJ Vehicle Repairs, Diss with the following works carried out; Original B20 engine rebuilt by Amazon Cars Ltd (with unleaded head, electronic distributor and su carburettors)

Borg Warner BW35 automatic gearbox (same as in Aston Martin DB4/5, Jaguar Mk2, Triumph Stag, etc.)

New seals, sump gasket kit & kickdown cable.

Su carburettors restored by Andrew Turner, Colsterworth, Lincs

Steering box rebuilt by Ultimate Recon Ltd., Birmingham.

Cooling system – new water pump, radiator re-cored, new pipes and hoses.

Braking system – new calipers, discs, master cylinder, flexible hoses and Koni pipework.

Suspension - new shock absorbers, ball joints and poly bushes.

Front wishbones, rear torque/support arms and front & rear springs blasted & painted.

All original chromium parts re-plated by Silchrome Ltd., Leeds (inc. Bumpers, grille & window frames, door handles, tailgate hinges, headlamp bezels & rear light bases).

P1800E alloy wheels blasted and powder coated by Excel Powder Coating Ltd., Mildenhall.

New interior trim, carpets & original upholstery restoration by D.S. Thompson, Cambridge.

New Volvo OEM parts (too numerous to list) supplied by Brookhouse Volvo Ltd., Ipswich.

Rare original Volvo OEM parts (unavailable new)

supplied by Amazonia, Eye, Suffolk.

For reliability, the original Bosch d-jetronic fuel injection system was replaced with twin su carburettors (as fitted to all Volvo P1800 cars prior to 1969). Also, for reliability, the original contact breaker/condenser distributor was replaced with a modern electronic distributor made by 123ignition.nl

£18,000-20,000

All lots plus buyers premium of 27% including VAT



Lot 1476

1476

A 1976 Morgan Plus 8 3520cc
Reg No. ONV599P
Chassis No. R7846
Engine No. 3510014
Odometer 54,000

This beautiful example of the Morgan Plus 8 was sold to Japan and re-imported in 2009 to the UK. This car has the 3,520cc Rover V8 engine mated to an all synchromesh 4-speed gearbox. With a weight of only 851kg and power of 160.5ps at 5,200 rpm, makes for very spirited performance. There is a large history file giving details of work undertaken by the first UK registered owner and clearly from its condition, subsequent owners have taken good care of this lovely sports-car.

£25,000-30,000

1477

A 1984 Rolls Royce Mk I Silver Spur 6750cc four door saloon
Reg No. A637VUU
Chassis No. SCAZS0008ECH08451
Engine No. 08451

In blue with cream leather interior
Odometer 64,166 miles

The Silver Spirit/Spur was introduced by Rolls Royce in 1980 as the first of a new generation of company models, and formed the basis for the Flying Spur, Silver Dawn, Touring Limousine, Park Ward, and Bentley Mulsanne/8 series. The Spirit/Spur carried over the basic design of the Silver Shadow, its 6.75L V8 engine and GM source THM400 3-speed automatic gearbox, and similarly styled unitary bodywork manufactured at Pressedsteel.com. The Spur/Spirit continued the Silver Shadow's emphasis on ride quality by using its hydropneumatic self levelling suspension, modified with Girling automatic hydraulic ride, height control systems, and gas charged shock absorbers. This car has been consigned from a deceased's estate in North Essex, and was owned for several years by the current vendor. It has stood for approximately the last two years, prior to which it was running regularly and is thought to be in good overall condition.

£6,000-8,000

1478

A 1986 Naylor TF 1700

2-Seater Sports car with steel roadster bodywork which is a faithful replica of the 1950's MG TF.

Reg No. NTF54
Chassis No. SA9TF51MIFA013048
Engine No. 17V647AAH101914
Odometer 13462

In Porsche Red with Black leather interior, chrome wire wheels, stainless steel exhaust, tonneau cover and head rests. The TF 1700 had a front engine and rear-wheel drive. The Naylor has a body constructed from metal panels attached to a wooden body-frame constructed from ash. Most of the car's mechanicals came straight from the Morris Marina/Ital, including the 1.7 litre SOHC O-series engine with 77 hp (57 kW) and the four-speed manual transmission. The rear axle was the Marina's live unit with coil springs. The front suspension is independent, with coil sprung MacPherson struts, and a rack-and-pinion steering. Top speed is 94 mph (151 km/h). The TF 1700 was fully type-approved and came with a warranty from the Austin Rover Group.

This example has a full-service history and is in excellent all-round condition with only minuscule imperfection on the NSR wing. Chrome is also good with only the luggage rack and rear bumper exhibiting slight corrosion.

£16,000-18,000



Lot 1478

I479

A 1989 Suzuki Alto five-door hatchback 796cc automatic
 Chassis No. JSAECB91S00203705
 Engine No. F8B392240
 Registration No. F842 RRT
 Odometer 17,400
 MOT expires 12th May 2023
 This untouched original example has had very little use and is in excellent running order.
£1,000-2,000

I480

A 1994 Subaru Impreza Turbo 2000 AWD four-door saloon
 Registration No. S109 AAR
 Chassis No. JF1GC8KD3WG031646
 Engine No. 253680
 Odometer 132,700 miles
 This car is in blue, is a UK car with original specification, three owners from new, full service history up to 97,000 miles and comes with full MOT.
£3,000-4,000

I481

A 1998 Jaguar 4 litre XK8 convertible automatic coupe
 Reg No. S289 BWC
 Chassis No. SAJJGKFD3AR002021
 Engine No. not known
 Green with grey leather interior.
 Odometer circa 98,626 miles, MOT expires October 2022
 This vehicle is in good running order and the electric hood is fully working
£5,000-7,000

I482

A 1999 Alfa Romeo Spider L 2.0 twin spark
 Registration V631 RNP
 Chassis No. ZAR 9160000006061251
 Engine No. AR32301
 Silver
 Odometer 142,329 miles
 This vehicle comes with V5, owner's manual, and some history. The engine was rebuilt approx 4,000 miles ago, with electric hood fully operating.
£2,000-2,500



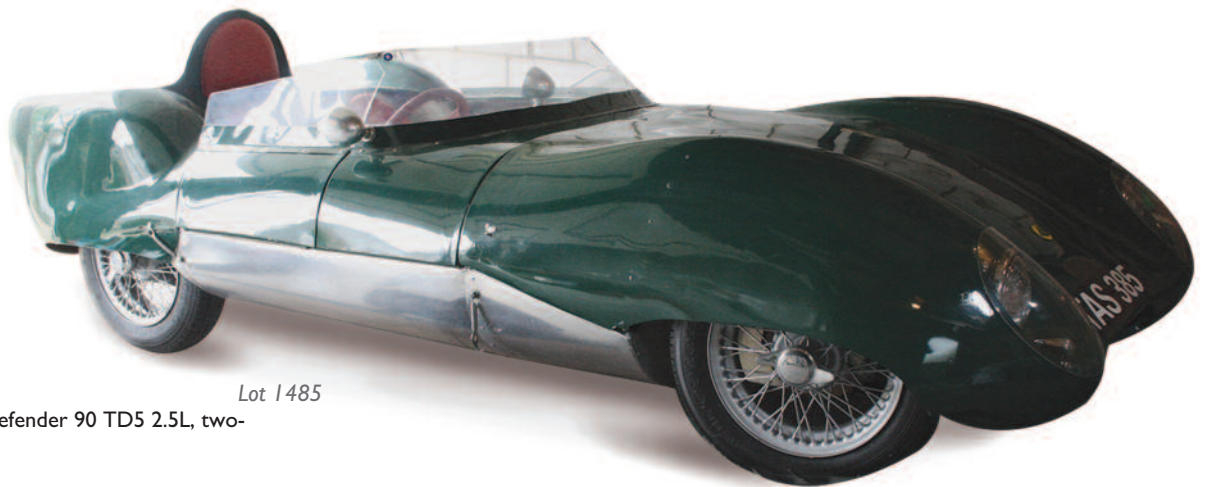
Lot I483

I483

A 2001 Land Rover Defender 90 Td5 2495cc
 Registration No. V6 JVD
 Chassis No. SALLDVA871A611445
 Engine No. 10P078278
 Odometer 77,500
 Green
 Vendor informs us that the following works have been carried out within the last two years/1000 miles, in addition to general maintenance: Rear crossmember replaced, stainless steel or galvanised fittings for all attachments Rear cross member, outrigger and front arch mud shields fitted, equivalent to Gwyn Lewis type Chassis members interior pressure cleaned and WaxOiled New military rear step Refurbished towbar and new electrical socket New battery 5 Second-hand Land Rover Boost wheels with almost new General Grabber AT tyres New BSB sidesteps fitted Sound deadening acoustic mat liner fitted on interior of hardtop, rear tub, under-mat areas front of vehicle driver and passenger side All lubricants replaced, engine, gearbox, transfer box and differentials. Both engine oil filters replaced. New injector wiring loom fitted. Exhaust centre section straight through pipe fitted Front lamp bar fitted Rear work lamps and interior work lamp fitted USB charging socket fitted Reversing camera fitted New lockable fuel cap New front brake discs and pads fitted Alpine lights - replaced seals Front seat base corner protectors fitted Door liners removed, corrosion treatment and window mechanism lubrication carried out, Optimill quick release steering wheel boss fitted with Moto Lita steering wheel.

Vendor states work carried out within the last two years/1000 miles, in addition to general maintenance:
 Rear crossmember replaced, stainless steel or galvanised fittings for all attachments
 Rear crossmember, outrigger and front arch mud shields fitted, equivalent to Gwyn Lewis type
 Chassis members interior pressure cleaned and WaxOiled
 New military rear step
 Refurbished towbar and new electrical socket
 New battery
 5 Second-hand Land Rover Boost wheels with almost new General Grabber AT tyres
 New BSB sidesteps fitted
 Sound deadening acoustic mat liner fitted on interior of hardtop, rear tub, under-mat areas front of vehicle driver and passenger side
 All lubricants replaced, engine, gearbox, transfer box and differentials. Both engine oil filters replaced.
 New injector wiring loom fitted.
 Exhaust centre section straight through pipe fitted
 Front lamp bar fitted
 Rear work lamps and interior work lamp fitted
 USB charging socket fitted
 Reversing camera fitted
 New lockable fuel cap
 New front brake discs and pads fitted
 Alpine lights - replaced seals
 Front seat base corner protectors fitted
 Door liners removed, corrosion treatment and window mechanism lubrication carried out
£16,000-18,000

All lots plus buyers premium of 27% including VAT



Lot 1485

I484

A 2002 Land Rover Defender 90 TD5 2.5L, two-axle rigid body

Reg No. PK02YLL

Chassis No. SALLDVA572A637649

Engine No. 15P23426A

Green

Odometer Circa 102,000

Vehicle was acquired by the current owner in November 2019, and has stood for approximately 18 months, but otherwise is thought to be in good mechanical condition.

Service book complete up to 2015.

£7,000-9,000

I485

A 2003 Lotus Eleven replica by Ken Newson

Reg No. TAS385

Chassis No. SABTVR03463122280

Engine No. FW2769

Experienced engineer Ken Newson tragically suffered a rare brain tumour in 2001 as a result of which he went through a difficult period of rehabilitation. Ken had always loved the classic design of Colin Chapmans 1950's Lotus Elevens and decided as part of his recuperation he would build a close as possible replica of his favourite car. Using copies of the chassis drawings he fabricated the replica spaceframe chassis. A Coventry Climax FW 1020cc engine was obtained and converted to run in the car mated to a BMC A series gearbox and rear axle. Other proprietary components similar to the originals were used to complete the running gear. Wherever possible, all components and finishes were done in order to replicate the original. This vehicle was first registered with the DVLA on the 13/06/2003 as an Historic Vehicle. Ken has finished this construction to the highest possible standards and we are informed that Lotus Eleven experts have praised his work. Ken is unable to drive on the public highway but has, since completion, been able to enjoy driving his car on closed circuits including Le Mans and Goodwood. With advancing age he no longer feels able to continue exercising his pride and joy and is seeking a new enthusiastic owner to take on his creation. The car is sold together with the single axle trailer as photographed.

The car comes with a custom-built trailer, full photographic record of its construction.

£20,000-25,000

I486

A 2004 Mercedes CLK 320 Avant Garde

Automatic Convertible 3199cc

Registration RK04 LZN

Chassis No. WDB2094652T020248

Engine No. 11295531708781

Odometer 108262

This vehicle is in silver, with valid MOT until November 2022, and is in good overall running order with fully operational electric hood.

£2,000-3,000

I487

A 1921 Sparkbrook 269cc motorcycle

Registration No. AJU 558A (formerly BP 3332 and later transferred in 1989)

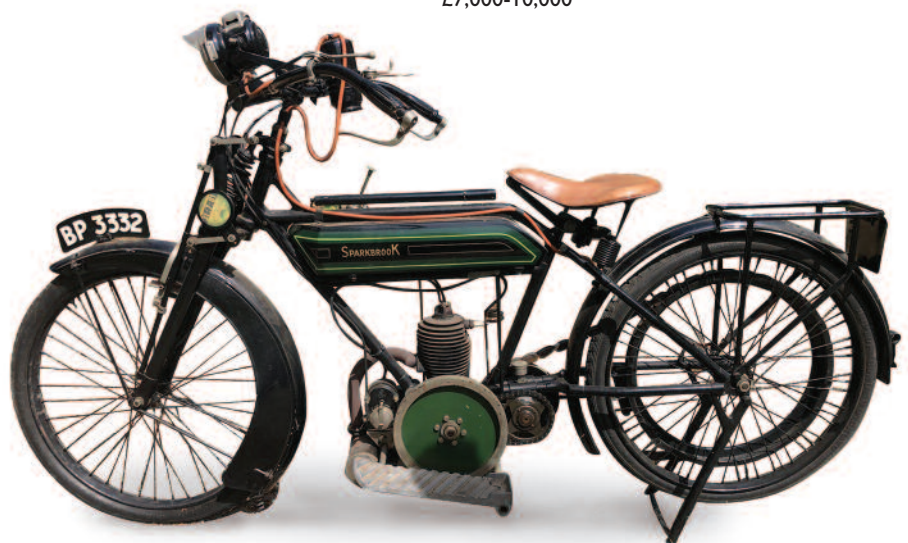
Chassis No. 750

Engine number 03239

With Villiers outside flywheel engine, chain primary drive, belt final drive, acetylene lighting set, P&H and Lucas, two speed with bulb horn, hand pump oiler with sight feed, a carb CAV magneto, all with typical simple brakes, replacement leather pan saddle, black and green.

Sparkbrook were a Coventry-based bicycle firm founded in 1883, they began motorcycle production in 1912 with sidecar machines utilising JAP 746cc and 980cc V-twins. In 1914 they introduced the Sparkbrook Light Motorcycle with a Villiers Mark I engine, a model which continued until production of the motorcycle ceased in 1925, and ownership of the Mark passed to Singer. This barn find example discovered locally has been dry stored and unused for approximately 40 years.

£7,000-10,000



Lot 1487

All lots plus buyers premium of 27% including VAT

I488**A 1956 Ariel NH 350cc Red Hunter motorcycle****Registration No. UOB105****Chassis No. PR3099****Engine No. MA1251****Colour: Red/maroon****Odometer 00070**

The Ariel Red Hunter was the name used for a range of Ariel single-cylinder and twin-cylinder motorcycles. They were designed by the firm's Chief Designer, Val Page, in 1932, around an overhead-valve single-cylinder engine he developed six years earlier. Originally a "sports" version of the Ariel 500, 250 and 350cc versions were developed and became popular with grass track and trials riders. From 1948, the 500cc twin-cylinder Ariels were produced in De Luxe (KG) and Red Hunter (KH) models. All Red Hunters had a distinctive dark red petrol and oil tanks which were painted in the former Boumbrook cinema opposite the main Ariel factory in Dawlish Road. The engines were all run for two hours on a test bench to maintain Ariel's record of reliability and quality control.

The Red Hunter was a success and formed the backbone of the company, and made Ariel able to purchase Triumph. On the 500cc, acceleration from 0 to 60 mph could be achieved in 10.9 seconds, while stopping from 25 mph could be made under 24 feet.

Edward Turner developed the design further with added chrome and it became a popular touring road bike. Handling was improved by the addition of rear suspension and telescopic forks and it gained an alloy cylinder head from the 1950s.

Champion Sammy Miller had great success with a 500cc Red Hunter from 1955.

This version was fully restored and previously owned by 1970s road racing star John "Mooneyes" Cooper, undergoing a full nut & bolt restoration. At significant expense Cooper originally purchased the machine from the family of the original owner, since new, in 1956. The bike was acquired by our vendor approximately three years ago and is in good running order, and is sold with V5 and a quantity of photographs showing full restoration.

£4,500-5,500**Lot 1490****I489****No lot****I490****A 1957 AJS 16MS 350cc motorcycle****Registration No. YKO 527****Chassis No. A50669****Engine No. 30793****Odometer 18708****In black**

The AJS model 16 was a British motorcycle made by Associated Motorcycles at the former Matchless works in Plumstead, London. The rigid frame AJS model 16M 350cc single was developed in 1945 from the military Matchless G3/L WWII motorcycle, and remained in production selling large numbers to the civilian market well into the 1960s. This simple and practical model 16 requires minimal maintenance and was very economical, which was ideal during petrol rationing. In 1953 the model 16M was modernised with a dual seat replacing the saddle. In 1956 the gearbox with a new four-speed unit of AMC'S own design, and 1957 saw further improvements. The 348cc OHV air-cooled single cylinder engine produced a top speed of 78mph and 16bhp.

This example is in good, fully running overall condition and has enjoyed regular but light use by our vendor.

£3,000-4,000**I491****No lot****Lot 1488**

All lots plus buyers premium of 27% including VAT

I492

A 1962 Matchless 350cc motorcycle

Chassis No. 2583

Engine No. I1465

Black.

Odometer 06414

Matchless is one of the oldest marques of British motorcycles, manufactured in Plumstead, South-East London, between 1899 and 1966. Like many motorcycle manufacturers of the time they had started as bicycle manufacturers and went on to have a long history of racing success

This example is in excellent restored condition, almost all original with replacement seat. Fully running and occasionally ridden by our vendor who acquired the bike in 2019.

£1,200-1,800



Lot 1492

I493

A 1969 Triumph Tiger 100 500cc motorcycle

Registration No. SRL754H

Chassis No. HC24676

Engine No. T100SSHC24676

Odometer:06067

Colour: two-tone maroon and silver

The Tiger 100 (T100) was a standard motorcycle first made by the British Motorcycle Company Triumph in 1939. Production ceased when the Triumph factory was destroyed by a German bombing in 1940, but recommenced in 1946. Several variants were manufactured until 1973. After many years of production 1959 was the last year of the pre-units (separate engine/gearbox) and in 1960 it was completely redesigned in the new "unit" style as the T100A. A long line of T100s were produced throughout the 1960s, both for the UK and export markets.

This example has been owned by our vendor for several years, and is in excellent condition, fully running, and has been recently used.

£4,500-5,500

I494

A dismantled BSA Goldstar CB32 (project and parts)

Registration No. WPL 350

Chassis No. CB32CS690

Engine No. CB32CS690

Near-complete and sold as per images supplied.

£5,000-6,000

I495

A circa 1930s 'Lady on Winged Wheel' chromed car mascot for Crossley cars, stamped AEL to base (AE Lejeune - Augustine & Emil Lejeune), h.17cm (excluding screw fitting)

£50-80

I496

A Rover Viking head chrome car mascot, h.9cm, all raised on oak plinth

£50-70

I497

A bakelite fronted pre-war automobile clock, w.7.5cm

£30-40

I498

A vintage motor car bulb horn, black painted, 43cm

£50-70

I499

A vintage car boa constrictor horn (incomplete), 65cm

£60-80

I500

A Lucas No.720 oil-fired car side lamp, h.31cm

£60-80

I501

A pair of early 20th century James Neale & Sons Ltd of Birmingham Raydyot brass and metal oil-fired car lamps, h.33.5cm

£150-200

I502

A National Benzole Co. Ltd two-gallon petrol can, red painted, h.32cm; together with one other by Redline, being unpainted (2)

£70-90

I503

A Wells waste oil filter, No.3, with brass tap, red painted with black and gilt annotations, h.56cm

£100-150

I504

A Redex fuel consumption test tank, with fitting and filling instructions attached, and plastic tube with black scale

£50-70

I505

A Joseph Lucas Ltd of Birmingham running board tool box, being black painted metal with screw-down cover, circa 1930, w.38cm

£150-250

I506

A set of four anodised copper wheel trims, circa 1930s, dia.46cm

£40-60

I507

A Universal Motors 240v Motorcycle Roller Pit Starter with foot operated switch.
£250-400

I508

Ford Motor Company Master Parts list, November 1936, sections 1 & 2, and 3 & 4, in two bound volumes
£60-90

I509

The Motorcycle collection of magazines, circa 1959 (31)
£50-70

I510

Assorted motoring volumes, to include Automobile Year Nos.14 & 43, Ultimate Automobiles published by Haynes, Man & Motor the 20th century Love Affair edited by Derek Jowell etc (9)
£30-40

I511

The Automobile Engineer magazines, circa 1920s (31 copies)
£50-70

I512

After E Montaut - Targa Florio - 1908, heightened lithograph, the full sheet 45 x 89cm
£120-180

I513

After George Wright - a set of four motoring and sporting scenes, prints, 28 x 42cm, each in moulded oak glazed frames
£200-300

I514

§ Roger H Middlebrook (b.1929) - Empire Trailblazer DH66 Hercules, acrylic on mill board, signed lower left, 50 x 75cm, Guild of Aviation Artists exhibition label verso
£300-500

I515

Roger H Middlebrook (b.1929) - Portrait of Camm's Classic The Hawker Fury, monochrome pastel, signed lower left, 41 x 58cm, Guild of Aviation Artists exhibition label verso
£80-120

I516

Dudley Burnside (1912-2005) - Heliopolis - 1921, oil on mill board, signed and dated '91 lower right, 40 x 50cm, The Guild of Aviation Artists exhibition label verso
£120-180

I517

Michael Joseph - On Safari, oil on mill board, signed and dated '92 lower right, 30 x 42cm, Guild of Aviation Artists label verso; together with one other by the same hand - Gladys Aeronca C3, oil on mill board, signed and dated '92 lower left, 23 x 27cm, Guild of Aviation Artists label verso (2)
£100-150

I518

Grahame Joseph - Pair; Hornet Moth DH87 and Puss Moth DH80, watercolours, each signed lower right, 27 x 18cm, each with Guild of Aviation Artists label verso and further inscribed (2)
£60-80

I519

The Sopwith Aviation Co. Ltd., Kingston on Thames - Snipe General Assembly, 1/21/8 scale technical drawing lithograph, numbered 5/500, 57 x 83cm
£40-60

END OF SALE

All lots plus buyers premium of 27% including VAT